

Species: *Tetrastemma nigrifrons*

NODC # 43060602--

Describer: Coe, 1904

Characters:

- ① Mouth and proboscis pore united, subterminal; proboscis armed.
- ② Without cephalic furrows; without caudicle.
- ③ Head white with triangular dark marking. Body purple, or brown w white stripe, or red w brown flecks, or brown, or white rings.

Description: Live: 20-30 mm length; 2 mm width. Body rather slender, rounded throughout. Head rather variable, with 2 pr lateral oblique furrows, the 2nd pr marking off head from body. (sometimes forming fluted collar). Head whitish or yellowish, with dark shield-shaped or triangular marking on dorsal surface. Var. *purpureum* - head white w shield-shaped marking. Body purple (paler ventrally). Variety *bicolor*: head creamy with broad triangular marking. Body deep brown with white mediodorsal stripe (ventrally paler). Variety *pallidum*: head creamy with narrow triangular marking. Body pale brown w faint light mediodorsal line. Other varieties: dark spots on reddish brown; or brown with narrow white transverse lines

Ocelli present: 4 medium-size ocelli form square outside cephalic marking. Cephalic glands fairly well developed. Submuscular glands absent. Cerebral sense organs slightly ant. to brain.

Proboscis sheath extends to posterior end of body. Armature: basis conical, varying in size & shape. Stylet moderate,  $S = \sim 1/2 B$ . With 2 pouches of 2-4 (usually 3) accessory stylets. Basis - posterior end dark & granular.

With deep red oval discoid blood cells. [2]

Habitat: Among algae, bryozoa, etc on rocks. Intertidal and subtidal.

Common in kelp holdfasts. [3]

Range: Puget Sound to Costa Rica. [3]

Comments: Considerable doubts on whether all these varieties are or aren't one species.

PT Loma Specimen: I-21<sup>①</sup>, I-22-97, 136 FT.

SPM placed INTO *T. nigrifrons* based on ① distinctly "fluted" collar, ② Large, well developed eyes + ③ Less pear-shaped stylet basis. All characters as illustrated in MMS Atlas, Vol I, p. 128. - D 7/11/97

Type Specimens:

Material examined:

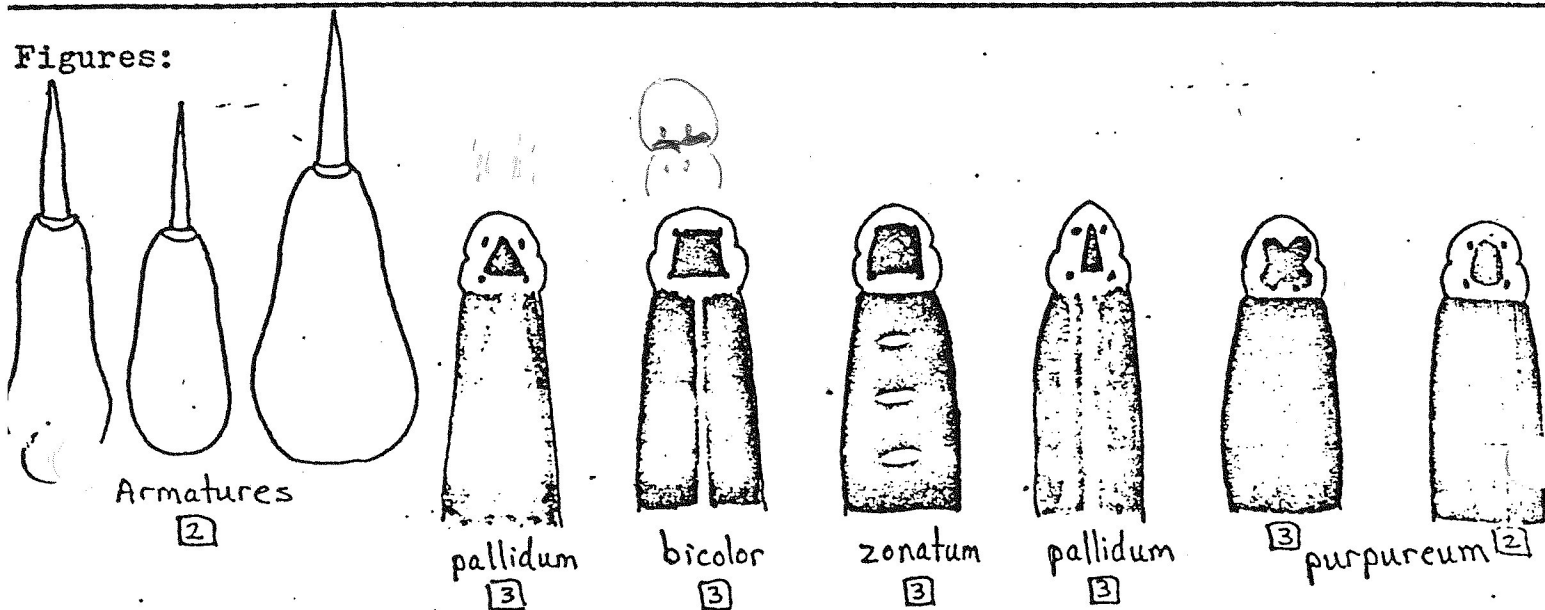
BLM Mussel Bed Survey, 1977-78  
King Harbor Stable Substrate Survey 1975

Synonyms:

References:

- 1 Coe, 1904 - original description
- 2 Coe, 1905 - monograph
- 3 Coe, 1940 - revision - good plates

Figures:



Below are the 4 variations of *T. nigrifrons*.  
To separate from *T. albidum* - use stylet (B/s ratio different)  
Additionally - on *T. albidum* pigment will be restricted to posterior  
head region & should not be solid but rather spotted or lined (diffuse).

