

*Cryptonemertes actinophila* (Bürger 1904)  
Group: Nemertea: Enopla: Hoplonemertea: Emplectonematidae

SCAMIT Vol. 14, No. 8

SCAMIT CODE: None

Date Examined: 27 October 1995  
Voucher By: John Ljubenkov & Dean Pasko

SYNONYMY: *Monostylifera* sp. SD 2 of Point Loma (for SCBPP)

LITERATURE: Gibson, R. 1986. Redescription and taxonomic reappraisal of *Nemertopsis actinophila* Bürger, 1904 (Nemertea: Hoplonemertea: Monostylifera). *Bulletin of Marine Science*, 39(1): 42-60.

DIAGNOSTIC CHARACTERS:

1. Body generally elongate, thin, rounded anteriorly and tapered posteriorly; without pigment (white).
2. There are four eyes. The anteriormost are brick red, simple cup-shaped ocelli, much larger than posterior pair and fairly close set. The posterior eyes consist of irregular aggregations of pigment granules (frequently round in appearance) and are located alongside the cerebral ganglia. They are sometimes difficult to see, but are generally brick red, much smaller and more separated than anterior pair, and fairly distant from the anterior pair.
3. Proboscis sheath extends ~ 1/4 the length of body.
4. Proboscis armature consists of a long stylet (approx. equal to basis length) with a cylindrical basis, and from 2-4 accessory pouches.

RELATED SPECIES AND CHARACTER DIFFERENCES:

DEPTH RANGE: intertidal to 150 m

DISTRIBUTION: Southern California Bight, frequently found in rocky substrates, and reported to live commensally among actinarians (hence the name "actinophila").

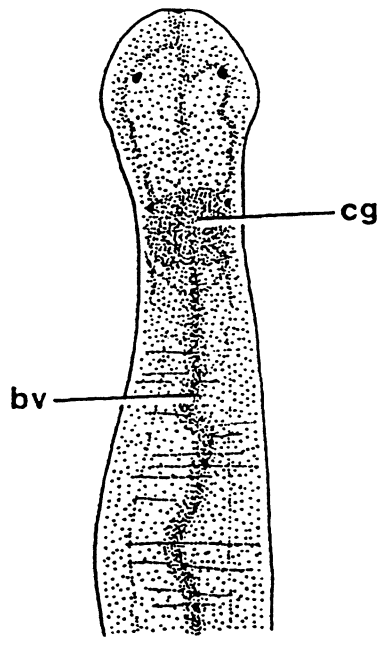


Figure 1

Figure 1. *Cryptonemertes actinophila*: A. anterior end, dorsal view (from Gibson, 1986).