



# CITY OF SAN DIEGO VOUCHER SHEET

**Species:** Palaeonemertea sp SD2

**Authority:**

**Common Synonyms:**

**Taxon:** Nemertea: Anopla

**Date:** 27 March 1998

**By:** Megan Lilly & Dean Pasko

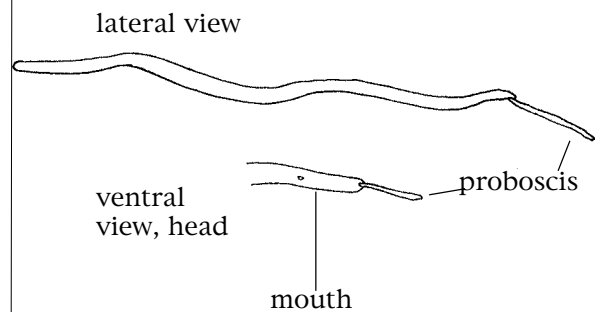
**Voucher Specimen(s):**

Station	Date	Storage Location	Voucher#
I-34	7/20/95,	62 ft	Voucher #34.

## Characters:

- (1) Small, thin, elongate, white, nearly featureless anoplan worm, attaining a size of 10 mm in length by 1.0 mm in width.
- (2) Proboscis pore apparent at anterior tip of head only when proboscis extended, otherwise inconspicuous
- (3) Mouth small, round, inconspicuous, located approx. 1-1/2 body widths behind tip of head
- (4) Ocelli absent
- (5) Caudal cirrus absent, posterior end rounded
- (6) Lateral sense organ absent (at least not apparent)
- (7) Body wall 2-layered (outer circular and inner longitudinal)
- (8) Lateral nerve located within outer circular along its entire length.
- (9) Proboscis extends approx. 1/3 - 1/2 the length of the body

## Illustration:



## Related Species:

The species could be mistaken for a juvenile *Carinoma mutabilis* except that these worms are proportionately smaller, less robust, and entirely smooth. *C. mutabilis* of similar length is typically a larger animal. Additionally, in *C. mutabilis*, the lateral nerve cords are within the longitudinal muscle layer posterior to the foregut.

The species has characteristics of the family Cephalothrichidae, specifically *Cephalothrix*, except for the placement of the lateral nerve chords. In *Cephalothrix* the lateral nerve cords are imbedded in the inner longitudinal muscle layer.

The species appears to be most closely aligned with the family Hubrechtidae, specifically *Hubrechtella*, but this genus has not been reported from eastern Pacific (see Gibson 1982a, b).

## Comments:

This species occurred suddenly in our shallow water samples in July 1995. It was nearly overlooked and discarded as a "proboscis" of a *C. mutabilis* until several specimens were discovered with their own probosci everted. We later learned that John Ljubenkov (independent consultant) and Don Cadien (LACSD) had encountered the same little beast in Orange County and Los Angeles County samples, respectively.

## References:

- Gibson, R. 1982a. Nemertea. In Synopsis and Classification of Living Organisms. ed. S.P. Parker, McGraw-Hill, New York 1, 823-46.
- Gibson, R. 1982b. British Nemerteans: Keys and notes for the Identification of Species. Cambridge University Press. 212 pp.

(over)

**Species:** Palaeonemertea sp SD2

**Taxon:** Nemertea: Anopla

**Date:** 27 March 1998

---

**Additional Illustrations:**



---

**Distribution—**

**Pt. Loma:** Imperial Beach, CA

**Geographic:** San Diego, CA

**Habitat:** Shallow sandy sediments