

SCAMIT CODE: SCCWRP 39

Date Examined: July 9, 1984

Synonymy:

*Carinella rubra* Griffin, 1898; Coe, 1904, 1905  
*Carinella speciosa* Coe, 1901

Literature Cited:

Coe, 1901; Coe, 1905; Coe 1940; Corrêa, 1964; Bernardt, 1979 (unpublished);  
MacEwen (unpublished)

Diagnostic Characters:

Live: size up to 3 m in length, 1 cm width. Color red, bright orange-yellow or vermilion. In alcohol, color turns to dull grey or brownish yellow, with a conspicuous brown preservation band in the esophageal region (Fig. 1). Mouth and proboscis pore separate. Without cephalic grooves and caudal cirrus. Head broad and rounded, with well-developed cephalic glands, lateral sense organs and cerebral sense organs. Lateral nerve cords are external to circular muscles or at the base of body epithelium throughout the body (Fig. 2).

Variability:

Related Species and Character Differences;

*T. polymorphus* can be separated from *T. pellucidus* by size and head shape. *T. polymorphus* has a larger body and a broad, rounded head compared to the smaller bodied, slender, rapidly tapering head of *T. pellucidus*. *Carinomella lactea* is similar to *T. polymorphus* and can be separated by sectioning the intestinal region. The lateral nerve cords are imbedded in the longitudinal muscles posteriorly in *Carinomella* while in *T. polymorphus* it is external to the circular muscles.

DORSAL VIEW



Figure 1.

X-SEC. INTESTINAL REGION

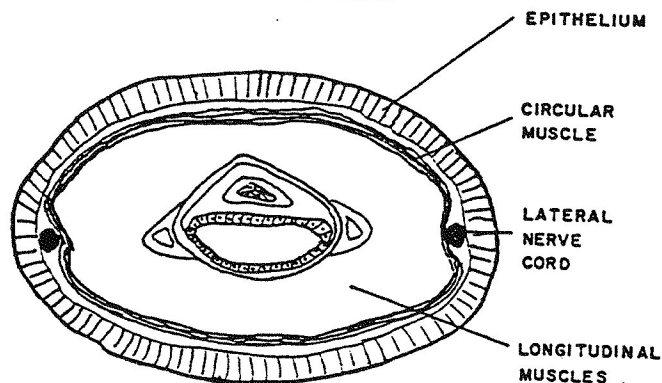


Figure 2.

