

**Tubulanidae sp. A SCAMIT 1995**  
Group: Nemertea: Anopla: Paleonemertea: Tubulanidae

SCAMIT Vol. 14, No. 8

---

SCAMIT CODE: None

Date Examined: 27 October 1995

Voucher By: Dean Pasko

SYNONYMY: Tubulanidae sp. SD1 CSDMWWD

LITERATURE: Coe, W. R., 1940. Revision of the nemertean fauna of the Pacific coasts of North, Central, and northern South America. Allan Hancock Pacific Expeditions. 2 No. 13: 247-323.

Blake, J. A. and A. L. Lissner, 1993. Taxonomic Atlas of the Benthic Fauna of the Santa Maria Basin and Western Santa Barbara Channel. Volume 1. Introduction, Benthic Ecology, Oceanography, Platyhelminthes and Nemertea.

**DIAGNOSTIC CHARACTERS:**

1. Generally a large, thick bodied "Tubulanid-type" nemertean with dark, reddish-brown colored body, with thin, light colored lateral line present; head cream colored.
2. Head set-off from body by distinct, fairly deep cephalic groove.
3. Eyes absent.
4. Lateral sense organ present as white (cream colored) lateral spot (one on each side).

**RELATED SPECIES AND CHARACTER DIFFERENCES:**

1. Hoplonemertea sp. A of Ljubenkov: Pigment pattern very similar, but the proboscis pore and mouth are united.

**COMMENTS:**

Specimens have been collected with a thin, orange silt covered tube tightly adherent to the body.

**DEPTH RANGE:** 90 to 120 m

**DISTRIBUTION:** Point Loma, California in silty sediments along the shelf.

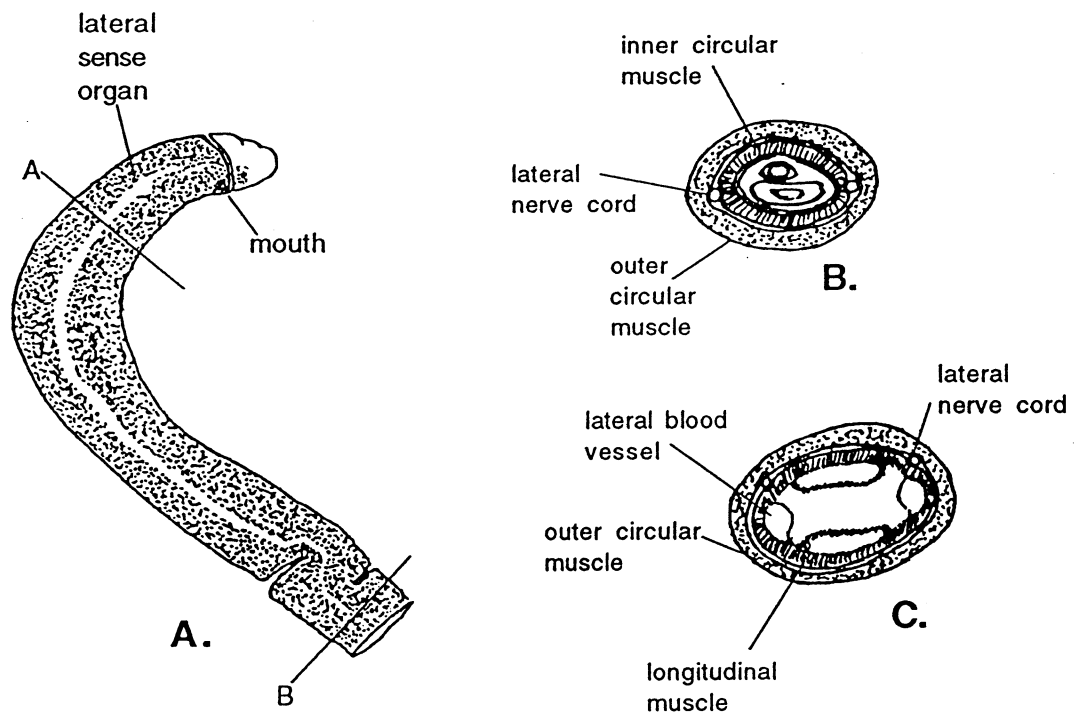


Figure 1. Tubulanidae sp. A : A. anterior end, lateral view; B. cross section through "A"; C. cross section through "B".