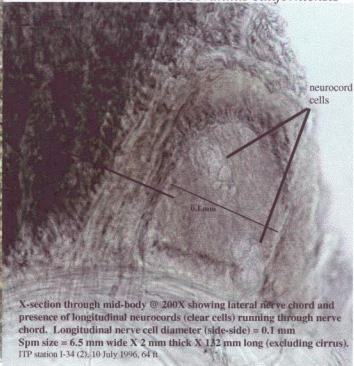
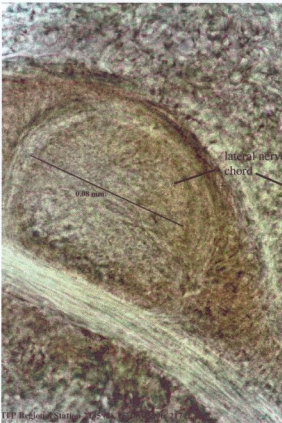


Lineidae: *Micrura* & *Cerebratulus*

*Micrura alaskensis*: X-section through mid-body showing lateral nerve chord @ 400X. diameter of nerve chord = 0.08 mm. Note absence of longitudinal neurocord cells found in *Cerebratulus*. Spm size = 5 mm wide X 2.5 mm thick X ~46 mm long (excluding cirrus).

*Cerebratulus californiensis*



X-section through mid-body @ 200X showing lateral nerve chord and presence of longitudinal neurocords (clear cells) running through nerve chord. Longitudinal nerve cell diameter (side-side) = 0.1 mm  
Spm size = 6.5 mm wide X 2 mm thick X 132 mm long (excluding cirrus).  
TTP station 1-34 (2), 10 July 1996, 64 ft