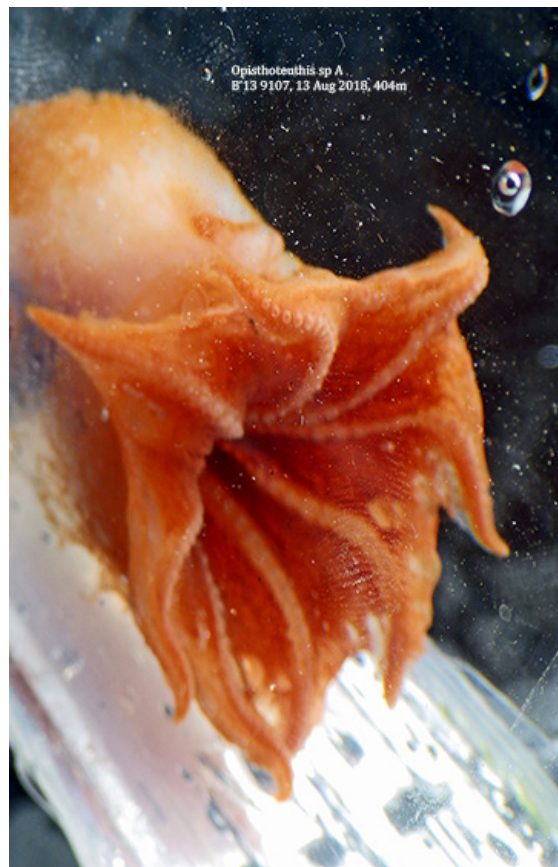


Opisthoteuthidae *Opisthoteuthis* sp A Hochberg 1976 §

Note the distinctive fins on the dorsal aspect of the mantle and the web between the arms. So far this animal has only been sampled once by CSD during the B'13 project at 404m. The LACSD animals pictured were collected during B'13 from approx 465m.



For additional assistance with identification efforts, see the “*Preliminary Key to the Benthic Cephalopods of the Eastern Pacific*” Hochberg 1976, in the SCAMIT Toolbox which keys out *Opisthoteuthis* sp A from *Opisthoteuthis californiana* S. S. Berry, 1949.

Below are some (modified) excerpts from two SCAMIT NLs discussing this species.

From Vol 14 no 7 (Nov 1995): Written by D. Cadien.

“During the CSDLAC November quarterly trawl series (1995) we re-encountered an animal not seen for several years, the undescribed pelagic octopoid *Opisthoteuthis* sp A. This lovely animal is a benthic-pelagic species which lives on or near the bottom in deeper water (LACSD takes it in over 300m). Apparently, it makes feeding excursions off the bottom into near-bottom waters and parachutes down onto its benthic prey from above. This octopoid has very short arms, which are united almost to their ends by web. Although muscular, the body is relatively gelatinous in response to buoyancy requirements for energy conservation. The “head” of the animal bears two thin “mickeymouse-ear” shaped fins, which are used in a sculling motion both for raising the animal into the water column and for maneuvering. Despite the depth at which the animals are taken, they have very large eyes, and may employ at least some visual predation. Their delicate translucent apricot color and general resemblance to the “ghosts” of Pacman video fame lead to the common name, “Apricot Ghost”. The other *Opisthoteuthis* species from the northeast Pacific, *O. californiana*, is black, larger, and differs in many morphometric characters. Dr. Hochberg surmises this species (*Opisthoteuthis* sp A) might actually belong to the related genus *Grimpoteuthis*.”

From Vol 32 no 4 (Nov/Dec 2013): “The CSD lab brought a specimen of *Opisthoteuthis* sp A for confirmation. Don Cadien reminded us that *Opisthoteuthis californiana* has a larger web and is more disc-shaped/flatter than *Opisthoteuthis* sp A. Megan will still perform a dissection of SD’s specimen to do a gill lamellae count to confirm her identification.”