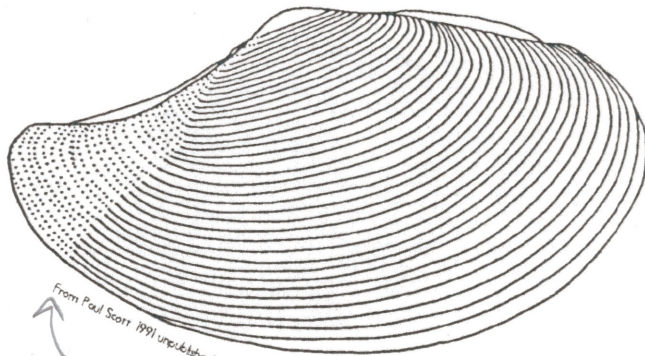


Nuculana spp. of Point Loma

Mollusca (Nuculanidae)
K. Barwick
September, 1995

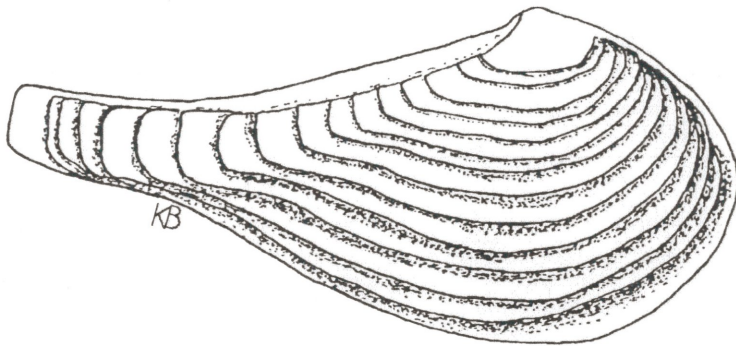


From Paul Scott 1991 unpublished notes
slopes
gently up

Nuculana taphira (Dall, 1896)

1. Shell short, inflated (juveniles more compressed).
 2. Sculpture of sharp-heavy-concentric ribs that become obsolete on the posterior-dorsal slope.
 3. Posterior produced, slightly pointed, recurved.
 4. Periostracum shiny, iridescent.
- (Adapted from Paul Scott, 1991, unpublished notes.)
Voucher M-85

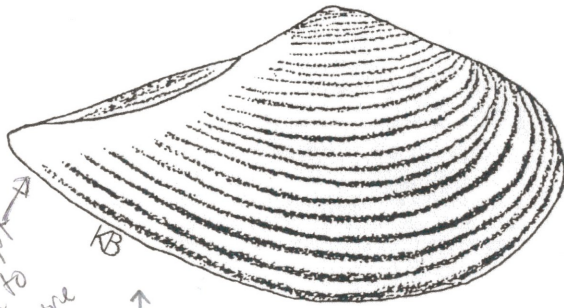
more inshore



KB

Nuculana hamata (Carpenter, 1864)

1. Moderately compressed.
 2. Strong concentric ribs.
 3. Squarely truncated posterior produced into long "rostrum."
- (Adapted from Abbott, 1974)
Voucher M-162, M-163 (dry)

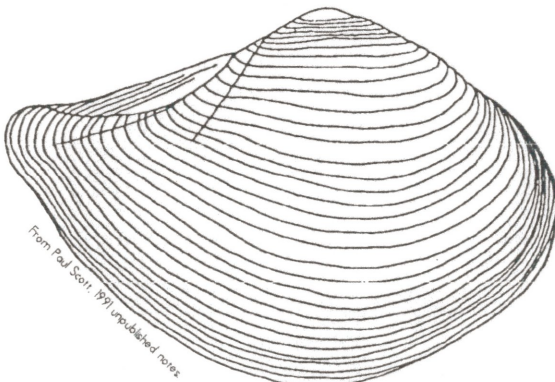


abrupt
end to
sculpture

KB
↑
straighter slope
than taphira

^{SPA SCAMIT}
Nuculana elenensis
(G.B. Sowerby I in Broderip & Sowerby, 1833)

1. Moderately inflated.
 2. Heavy concentric ribs end abruptly at the posterior-dorsal slope.
 3. Posterior produced into sharp point, acute.
 4. At deeper stations, 300+ ft.
- Voucher M-283



From Paul Scott 1991 unpublished notes

Nuculana penderi (Dall & Bartsch, 1910)

1. Shell very short, very inflated (juveniles also inflated).
 2. Sculpture of numerous concentric ribs that continue over the posterior slope.
 3. Posterior short.
 4. Esutcheon broad, depressed, demarcated by heavy radial ridge.
 5. More inflated than *N. taphira*, rare.
- (Adapted from Paul Scott, 1991, unpublished notes.)
Voucher not available.
On loan to Paul Scott.