

SCAMIT Voucher Sheet

Species: *Policordia* sp A SCAMIT 2014

Family: Verticordiidae

Vol. 33 No. 3

Date examined: October 7, 2014

Vouchered by: K. Barwick

Material Examined: 1 spm: OCSD# 2167.5 Bight 2013; Sta. 9137; 30JUL2013; 411 m
(33°22.126"N -117°22.126"E)

Synonyms: *Policordia* sp OC1 Barwick 2014

Description: Shell thin, ovate, translucent; dorsal anterior margin produced upward (Fig. 1). Thick coat of fine silt adhering to the ventral margin of the shell exterior (removed before photographing). Umbones prosogyrate. Periostracum with numerous evenly spaced folds radiating from the umbones. Lunule heart shaped; not well defined. Escutcheon not evident. Lithodesma large. Hinge edentate. Ctenidium present (Fig. 2). Foot with single bysal thread attached. Inhalant aperture surrounded by 20 feathered tentacles coated in fine sediment. Exhalant aperture flanked by 4 - 5 conical tentacles.

Related Species: This is the southern most record for the genus. *Policordia* is differentiated from *Dallicordia* by the presences of a ctenidia. *Policordia jeffreysi* (Friele 1879), as illustrated by Allen and Turner (1974) and pictured by Coan et al. (2000), has clathrose sculpturing consisting of commarginal folds of the periostracum overlying radial folds. *Policordia pilula* (Pelseneer 1911) is described as having 5 simple conical tentacles external to 23 feathered tentacles around the inhalant opening (Coan et al. 2000). The present specimen appears to lack the outer tentacles. These features along with the scarcity of material and unique geographical locality supports the establishment of a provisional species.

Distribution: Only known from material examined.

Comments: The specimen was forwarded to Dr. Elena Krylova's PhD student, Luda Safonova in Russia for further examination. It will eventually be deposited at LACM.

Literature: **Coan, Eugene V., Paul Valentich-Scott and Frank R. Bernard. 2000.** Bivalve Seashells of Western North America: Marine Bivalve Mollusks from Arctic Alaska to Baja California. Santa Barbara Museum of Natural History, Santa Barbara, California. 764 pp.

Allen, J. A. and J. F. Turner. 1974. On the Functional Morphology of the Family Verticordiidae (Bivalvia) with Descriptions of New Species from the Abyssal Atlantic. Philosophical Transactions of the Royal Society of London B 286: 401-532.

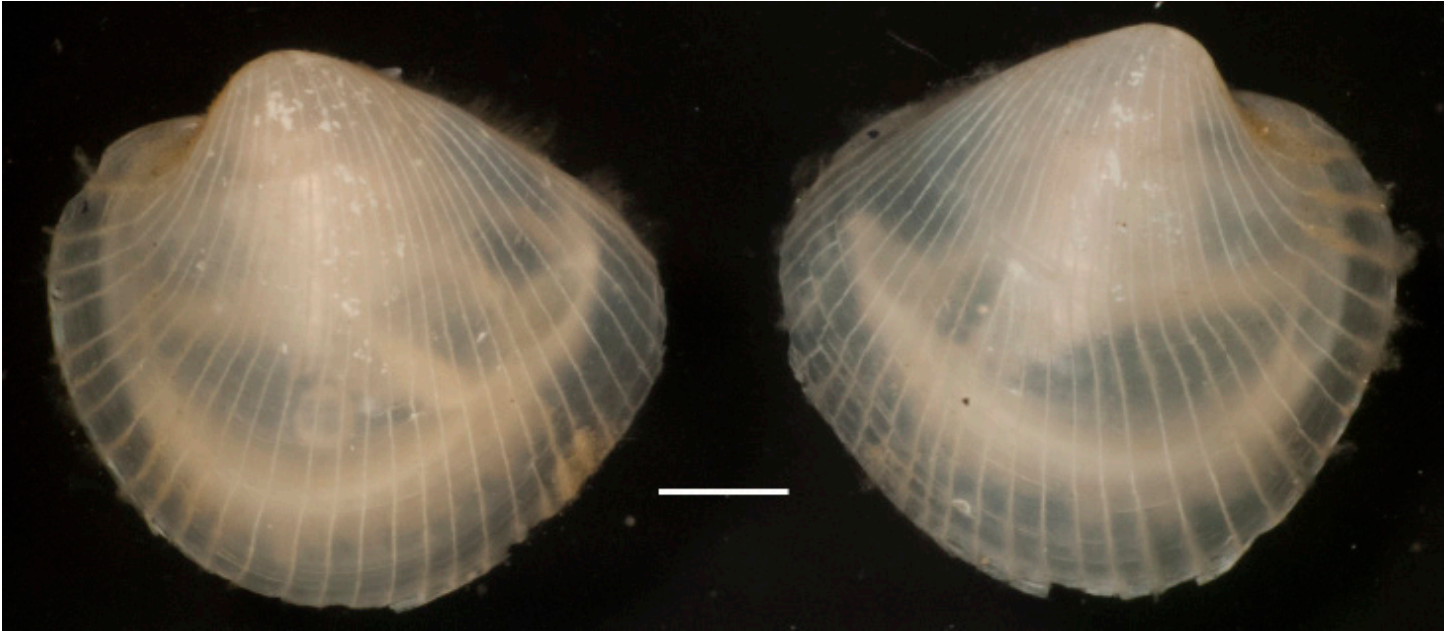


Fig. 1 – *Policordia* sp A - Exterior left valve and right valve, respectively (Scale bar 1 mm)

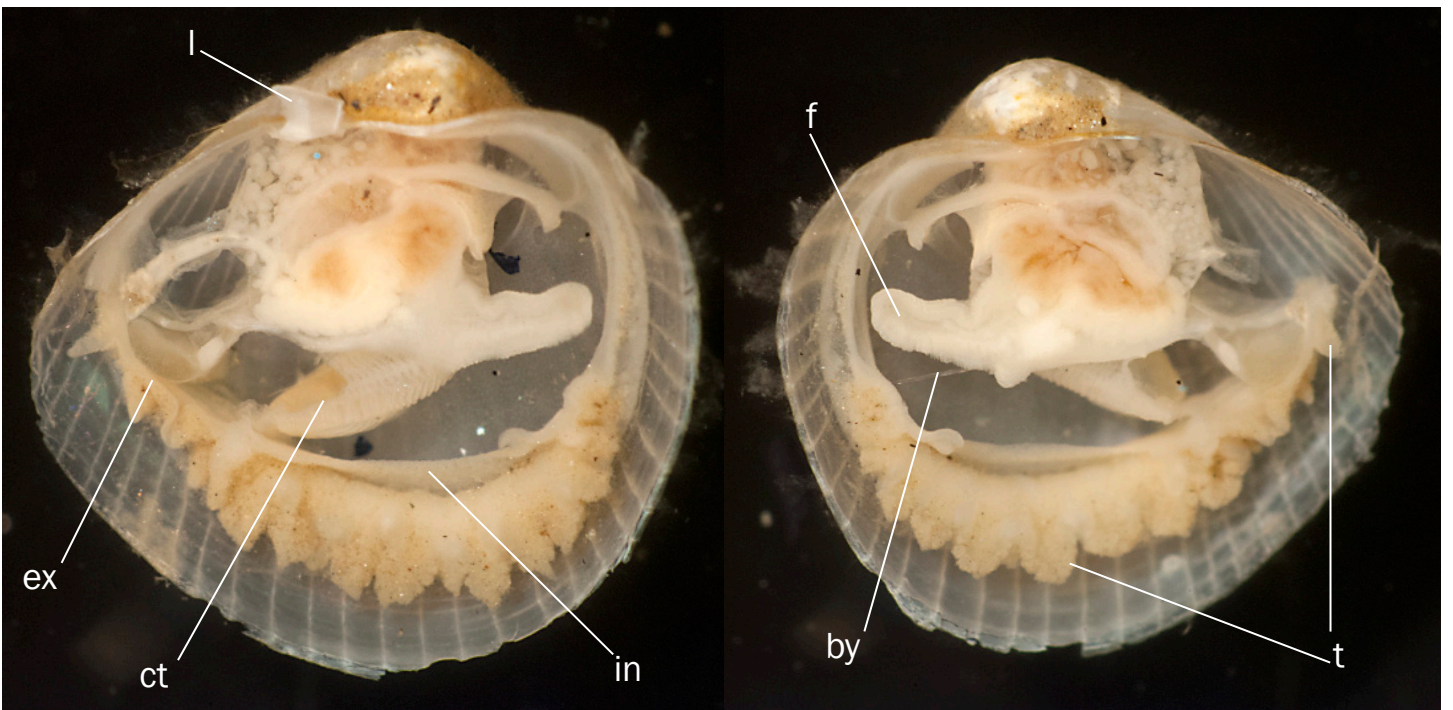


Fig. 2 – *Policordia* sp A - Longitudinal section, interior left valve and right valve, respectively
 Abbreviations: **by** byssus; **ct** ctenidium; **ex** exhalant aperture; **f** foot; **in** inhalant aperture; **l** lithodesma; **t** tentacles