

Listriolobus pelodes (Fisher, 1946)
Echiuridae

Vol. 4, No. 10

SCAMIT Code: SCCWRP 66

Date Examined: Dec. 4, 1985
Voucher by: Bruce Thompson, SCCWRP

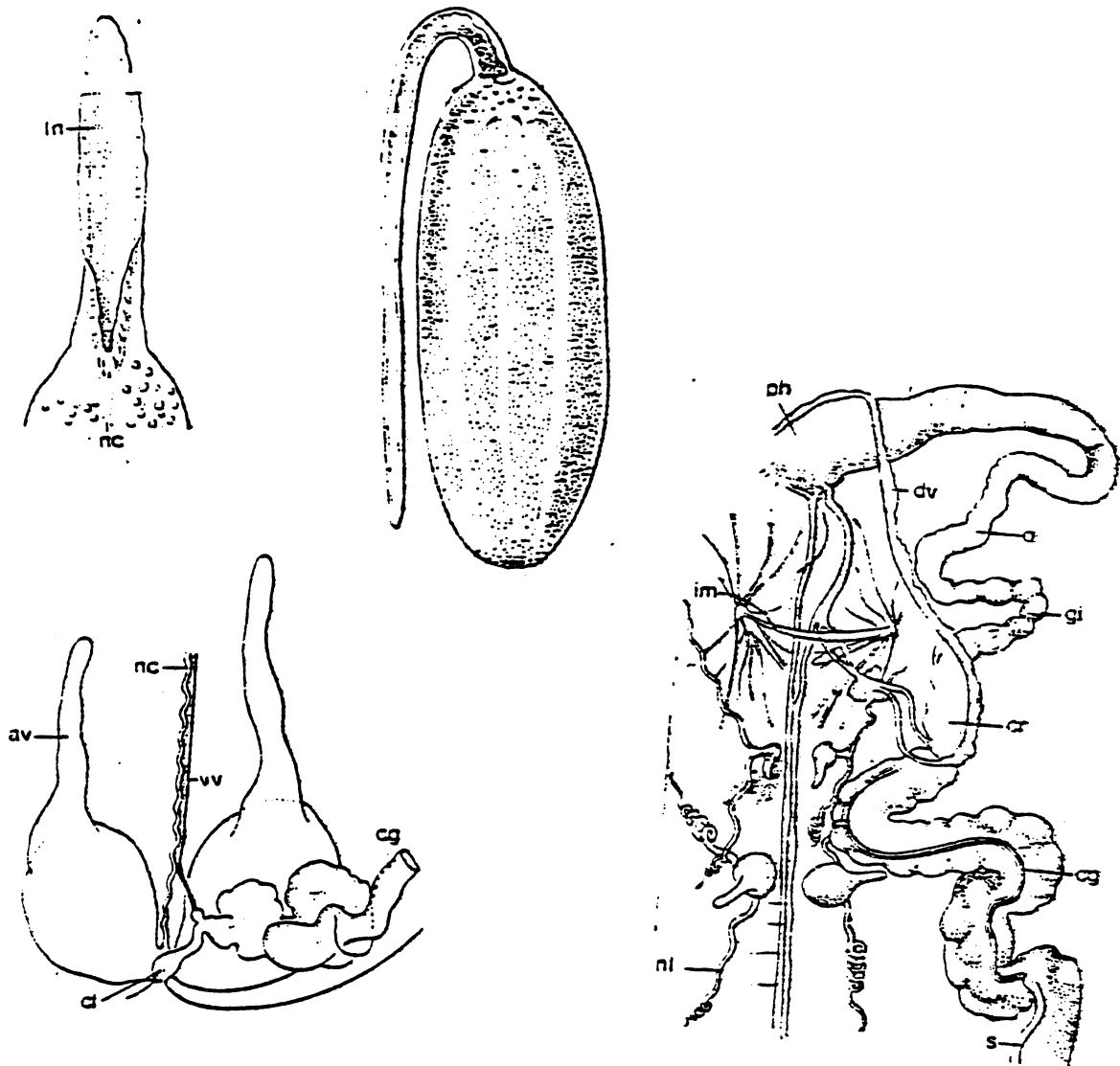
SYNONYMY: None

LITERATURE: Fisher, 1946
Stephen and Edmonds, 1972.

DIAGNOSTIC CHARACTERS:

1. 8 longitudinal muscle bands in body wall (may be absent in juveniles); oblique muscles not grouped into fascicles.
2. 2 pairs of nephridia with spirally coiled lips.

DISTRIBUTION: California to Baja, California; 30-200 m.



4. Listriolobus pelodes, anal vesicles and rectum, internal view of nephridial region, proboscis and whole organism.

ph=pharynx, dv=dorsal vessel, o=oesophogus, gi=gizzard, im=interbasal muscle, cr=crop, s=siphon of intestine, nl=nephrostomal lips, av=anal vessels, nc=ventral nerve cord, vv=ventral vessel, cg=ciliated groove, cl=cloaca, ln=longitudinal nerve (from Stephen and Edmonds, 1972).