

CLASS HOLOTHOROIDEA

Subclass Apodacea

Diagnosis. Up to 25 digitate to pinnate tentacles, tube feet absent or highly reduced. (e.g., *Caudina*, *Euapta*, *Leptosynapta*, *Molpadia*, *Synapta*, *Trochoderma*.)

Order Apodida

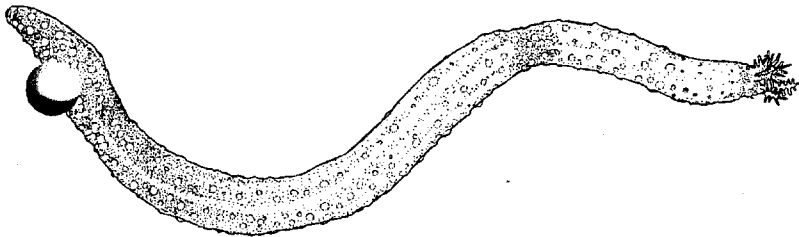
Diagnosis. Body cylindrical, worm-like, smooth, rough or warty surface, tube feet absent, respiratory trees absent, 10-25 digitate or pinnate tentacles, ossicles include wheels and anchors.

Family Synaptidae

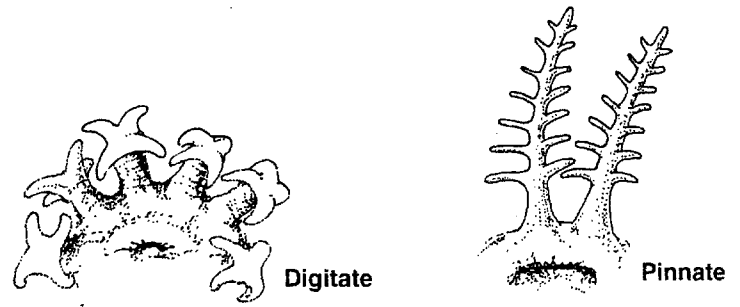
Diagnosis. Tentacles cylindrical or terete, not widened distally, either pinnate or digitate in form. Ossicles as anchors and anchor plates.

Leptosynapta sp..

General Body Design:

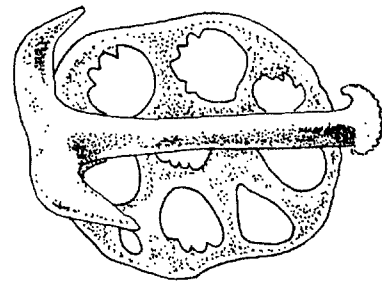


General Tentacle Morphology:



Larvae Morphology:

General Ossicle Morphology:



General Ring Canal Morphology:

