

CLASS HOLOTHOROIDEA

Subclass Dendrochirotacea

Order Dendrochirotida

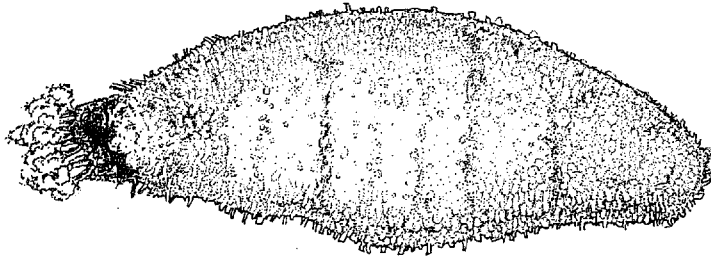
Diagnosis. Tentacles highly branched, 10-30 in number. Calcareous ring simple or complex; retractor muscles present. (e.g., *Psolidium*, *Psolus*, *Lissothuria*, *Cucumaria*, *Pentamera*.)

Family Sclerodactyiidae

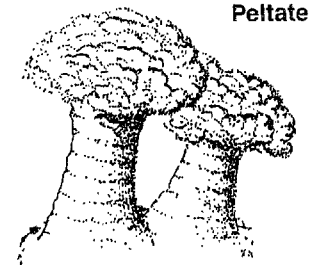
Diagnosis. Body wall not enclosed in a test of imbricating plates. Calcareous ring complex with single or paired processes; processes entire, not divided into pieces.

Pachythyone rubra

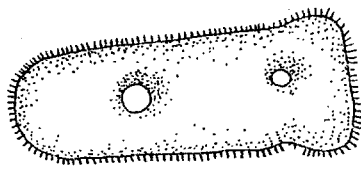
General Body Design:



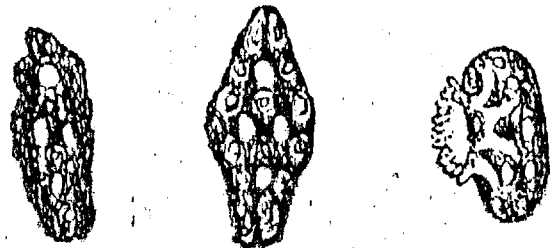
General Tentacle Morphology:



Larvae Morphology:



General Ossicle Morphology:



General Ring Canal Morphology:

