

Synonymy: none

Date Examined: 25 July 2004

Vouchered By: Lisa Haney LACSD

**DIAGNOSTIC CHARACTERS OF THE FAMILY PHYLLOPHORIDAE:**

1. U-shaped.
2. Body tapers at posterior end.
3. 10 dendritic tentacles (2 ventral tentacles smaller).
4. Tube feet non-retractable in 5 distinct double rows.
5. Calcareous ring with long processes divided into pieces.

**IDENTIFYING CHARACTERS OF SPECIES B:**

1. Body white/cream.
2. Five double rows of tube feet with tube feet also scattered in between rows.
3. Retractable tentacles.
4. Supporting tables in tube feet only (diverse morphologies).
5. Only plates in the body wall and introvert, plates are various sizes and shapes.

**RELATED SPECIES AND CHARACTER DIFFERENCES**

This specimen does not look externally like any of the other known Phyllophorids from southern California. It is a large animal (measuring 6.5 cm), thin body wall, and has very short conical tube feet in double rows. The ossicles found in this animal are also unique. No tables were found in the body tissue or the introvert. Instead the animal is packed full of plates of all sizes that are located near the surface and can easily be seen without a prep mount. Supporting tables of various morphologies can be found in the tube feet and are distinct.

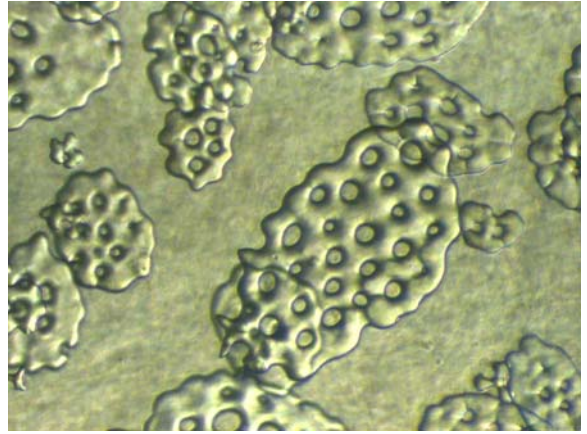
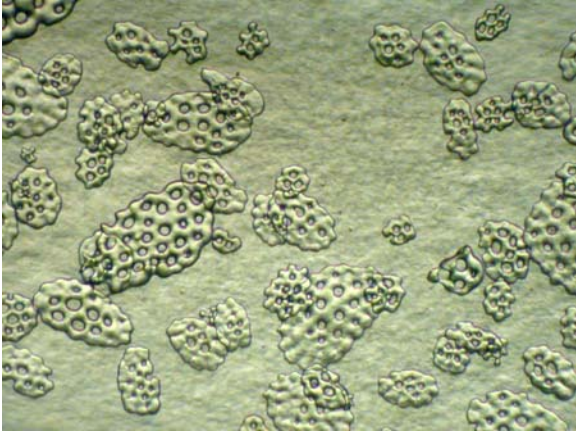
**DEPTH RANGE:** 56m

**HABITAT AND DISTRIBUTION:** Channel Islands

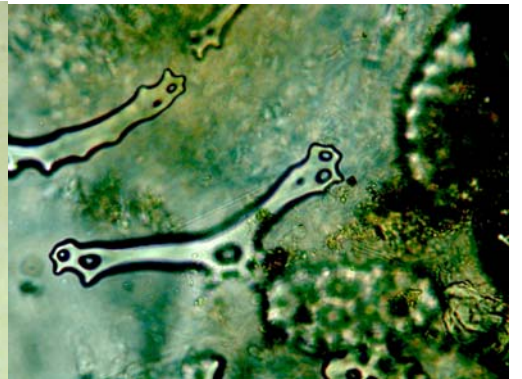
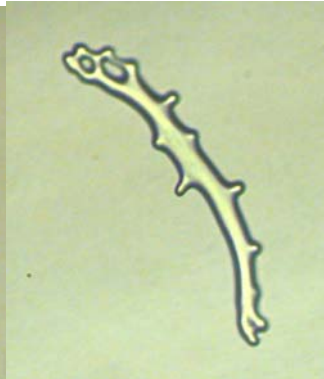
**LITERATURE:**

Lambert, Philip. 1997. Sea Cucumbers of British Columbia, southeast Alaska and Puget Sound. UBC Press.

# Phyllophoridae sp. B



Body Wall Ossicles



Diversity of Tube Feet Supporting Tables

# Phyllophoridae sp. B

