

Synonymy: none

Date Examined: 25 August 2004
Vouchered By: Lisa Haney LACSD

DIAGNOSTIC CHARACTERS OF THE GENUS PENTAMERA:

1. U-shaped.
2. Body tapers at posterior end.
3. 10 dendritic tentacles (2 ventral tentacles smaller).
4. Tube feet non-retractable in 5 distinct double rows.
5. Calcareous ring with long processes divided into pieces.

IDENTIFYING CHARACTERS OF SPECIES C:

1. Body white with yellow tube feet rows and a somewhat wrinkly appearance.
2. Five double rows (that are widely separated) of tube feet with no tube feet scattered in between.
3. Retractable tentacles.
4. Supporting tables in tube feet.
5. Only plates in the body wall and introvert, large and small.

RELATED SPECIES AND CHARACTER DIFFERENCES

Looks externally similar to *Pentamera pseudocalcigera* though much more “wrinkly” in appearance. Supporting tables in the tube feet resemble those of *Pentamera beebeyi* depicted in Deichmann, 1941 Pl. 15 #5 and #6, although the body wall tables are very different. The body wall plates look similar to *Pentamera populifera* and *Pentamera lissoplaca*

DEPTH RANGE:

305 meters

HABITAT AND DISTRIBUTION:

Palos Verdes Peninsula. Olive silt substrate.

LITERATURE:

Lambert, Philip. 1997. Sea Cucumbers of British Columbia, southeast Alaska and Puget Sound. UBC Press.

Deichmann, 1941. The Holothurioidea Collected by the Velero III during the Years 1932 to 193. Allan Hancock Pacific Expeditions Vol.8 (3): 158-159.

Pentamera sp. C

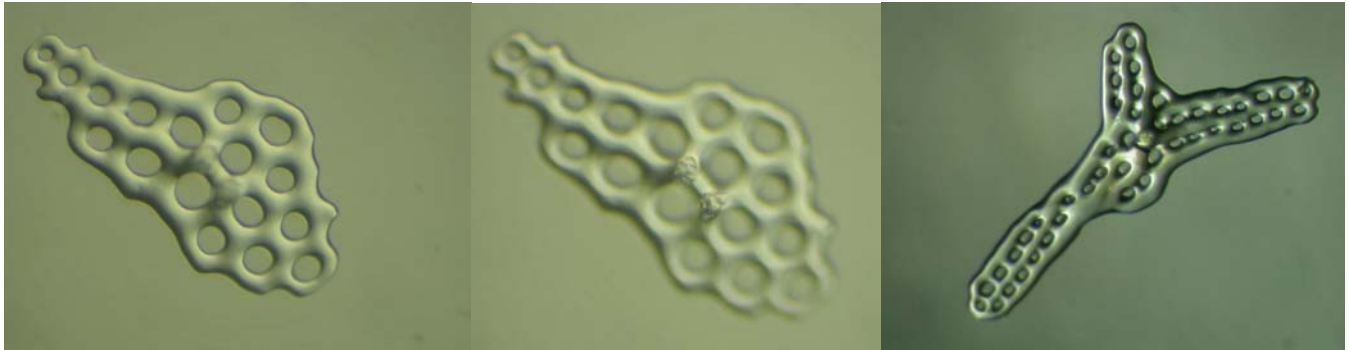


Table Plate in Body Wall

Spires on a Table Plate

Body Wall Plate



Variations of supporting tables in tube feet



Tentacle

Whole Animals