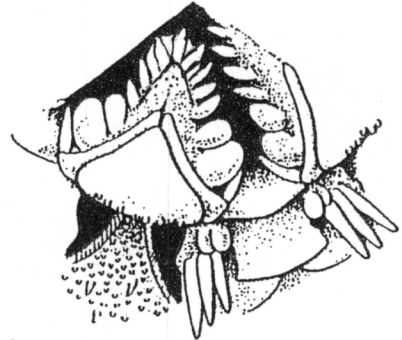


# CLASS OPHIUROIDEA

## Order Ophiurida

### Family Ophiacanthidae

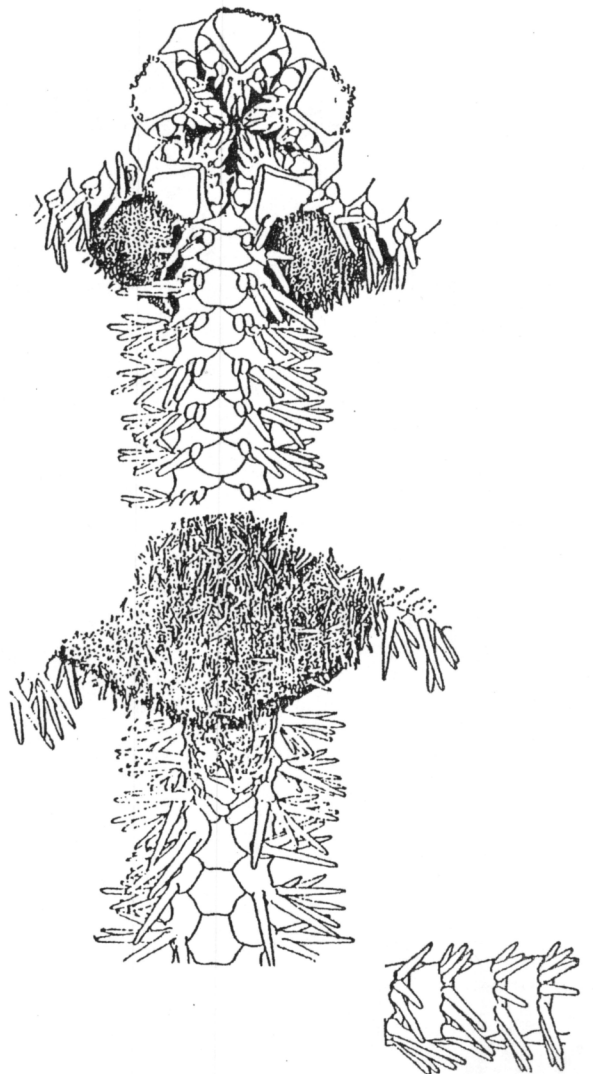
#### *Ophiacantha phragma*



### General Description:

Character	<i>Ophiacantha phragma</i>
Pattern of Aboral Disk	Lrg spikes covering disc
Radial Shield Pattern	hidden
Pattern of Oral Disk	Small spikes
Hyaline Forks	No
Arm Insertion to Disk	Into disc
Number of Oral Papillae	6
Arrangement of Papillae	Spikes on top Tapering into clubs below
Infradental Papillae	1
Oral Shield Pattern	N/A
Adoral Shield Spine	Yes
Tooth Pattern	Spikes
Number of Tentacle Spines	N/A
Pattern of Tentacle Spines	N/A.
Number of Tentacle Scales	N/A
Pattern of Dorsal (top) Tentacle	Pentagonal
Pattern of Ventral (bottom) Tentacle	Half circle
Cushion btwn Tentacle Plates	No
Color of Animal Preserved	N/A

Figure 29. *Ophiacantha phragma*.



Disk covered in spines  
Oral papillae pointed  
Arm spines slender