

CLASS OPHIUROIDEA

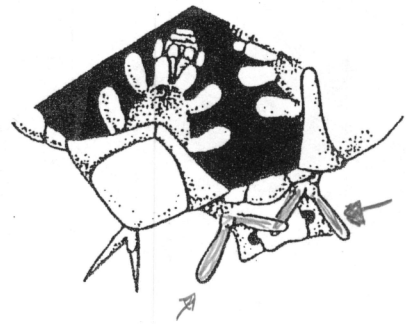
Order Ophiurida

Family Ophiocomidae

Ophiopsila californica

General Description:

Character	<i>Ophiopsila californica</i>
Pattern of Aboral Disk	Rosette lrg scale disc inflated
Radial Shield Pattern	Not visible
Pattern of Oral Disk	Small scales
Hyaline Forks	No
Arm Insertion to Disk	Underneath
Number of Oral Papillae	2
Arrangement of Papillae	2 paired lobes Laterally
Infradental Papillae	1 lobe center
Oral Shield Pattern	Brown cushions
Adoral Shield Spine	Yes
Tooth Pattern	Row of Lobes
Number of Tentacle Spines	3 to 4
Pattern of Tentacle Spines	Middle ones longer
Number of Tentacle Scales	Long tube flaps
Pattern of Dorsal Tentacle	Teardrop
Pattern of Ventral Tentacle	Square
Cushion btwn Tentacle Plates	Yes
Color of Animal Preserved	cream/ btwn joints



distinguished by its special, club shaped, flagellated tentacle scales.