

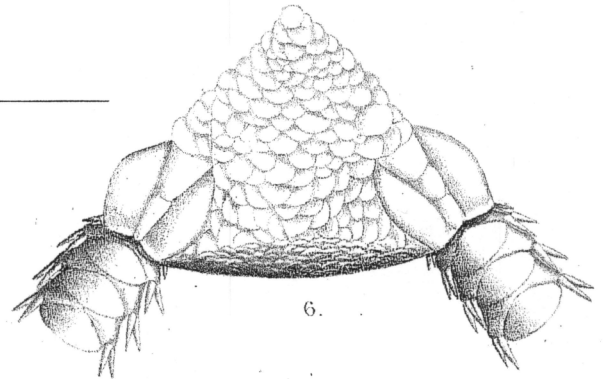
* Similar to *Amphiura corchana* but *diomedese* has a fully scaled disk on the oral side whereas *corchana* does not.

CLASS OPHIUROIDEA

Order Ophiurida

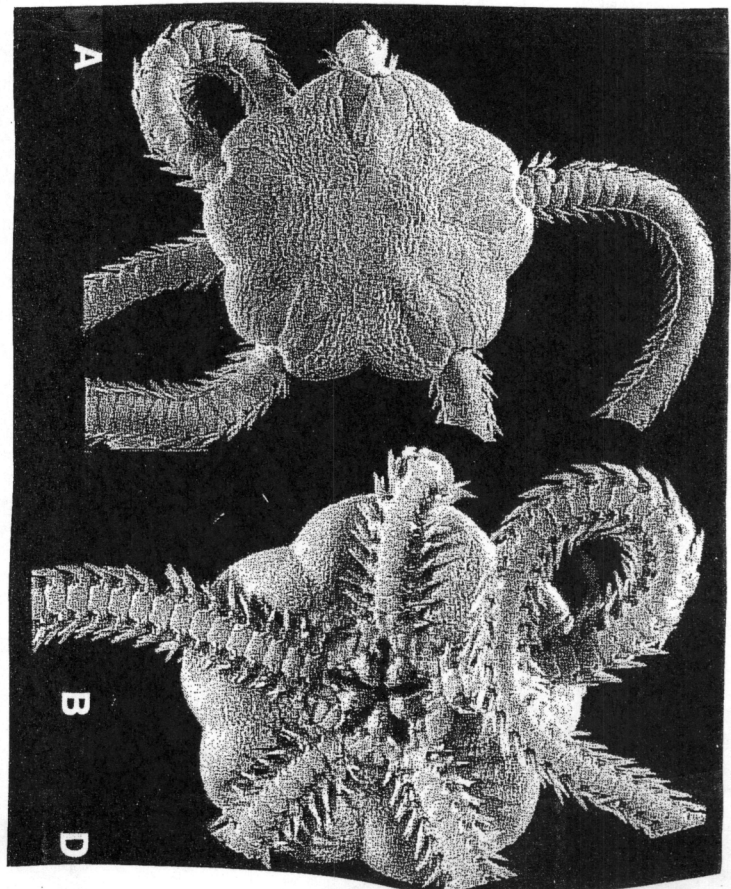
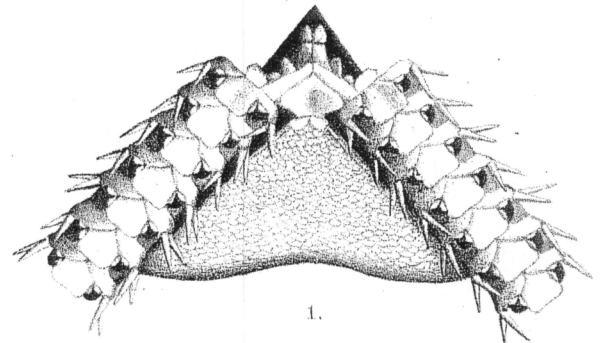
Family Amphiuridae

Amphiura diomedese



General Description:

Character	<i>Amphiura diomedese</i>
Pattern of Aboral Disk	Med. - large scales
Radial Shield Pattern	Separated V-shape
Pattern of Oral Disk	Small scales
Hyaline Forks	No
Arm Insertion to Disk	Underneath
Number of Oral Papillae	2 each side
Arrangement of Papillae	1 round 1 conical
Infradental Papillae	2-Block-like
Oral Shield Pattern	variable
Adoral Shield Spine	1 papillae
Tooth Pattern	knobs
Number of Tentacle Spines	3
Pattern of Tentacle Spines	broad/sharp
Number of Tentacle Scales	2 sm flaps
Pattern of Upper Arm Plates	oblong
Pattern of Adoral Arm Plates	Squared heart
Cushion btwn Tentacle Plates	yes
Color of Animal Preserved	Gray - white



Single oral papillae on each side of jaw, separated by wide distance from the two papillae at jaw tip

Scaled disk