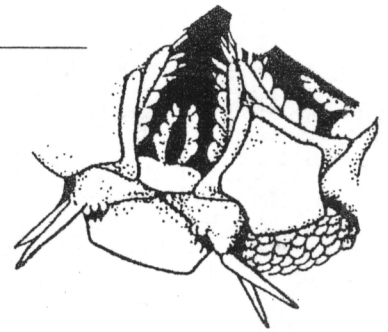


CLASS OPHIUROIDEA

Order Ophiurida

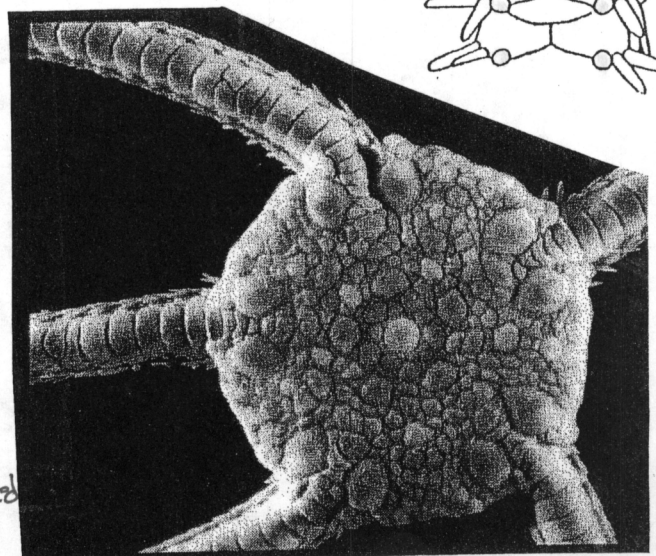
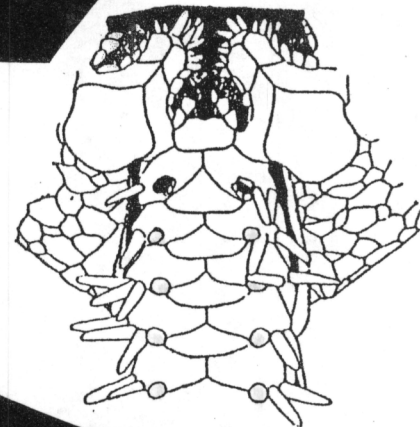
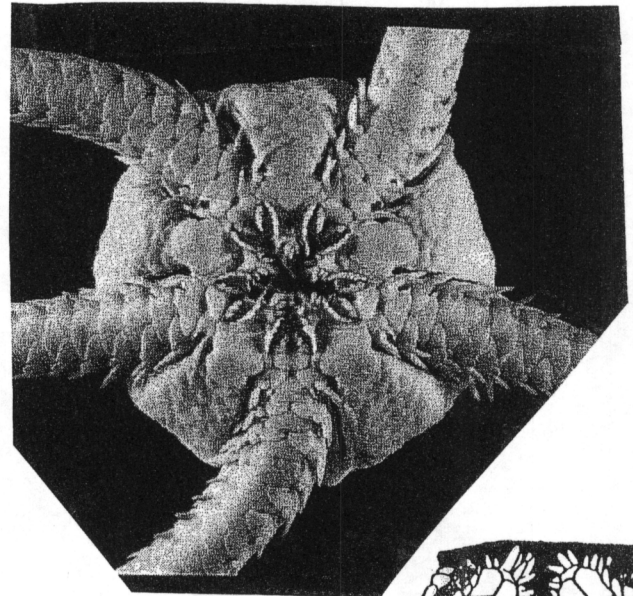
Family Ophiuridae

Ophiura luetkenii



General Description:

Character	<i>Ophiura luetkenii</i>
Pattern of Aboral Disk	Lrg. Scales w/ flattened disc
Radial Shield Pattern	2 leaf blades
Pattern of Oral Disk	Fused w/scales
Hyaline Forks	Yes
Arm Insertion to Disk	Inserted to disc
Number of Oral Papillae	4
Arrangement of Papillae	All flattened and equal
Infradental Papillae	5 + spikes
Oral Shield Pattern	Shrp Arrowhead
Adoral Shield Spine	No
Tooth Pattern	Row of Spines
Number of Tentacle Spines	3
Pattern of Tentacle Spines	shrt, med, tall
Number of Tentacle Scales	1 round disc large button
Pattern of Dorsal Tentacle	Wide, Flare, Oval
Pattern of Ventral Tentacle	Triangular
Cushion btwn Tentacle Plates	No
Color of Animal Preserved	Cream



- Second pair of buccal padria open onto the oral surface & not into the mouth angles.
- Presence of arm combs / flat / rounded
- Disk scaled

* Similar to *Ophiura Sars.*