

**SYNONYMY:**

**COLLECTIONS:**

Bight'23 Stations 12133 (6m) and 12137 (4m), Ports of LA, near LA Maritime Museum.  
Newmark's Yacht Center, Wilmington, CA; collected June 2023 & August 2024 by M. Nydam.

**LITERATURE:**

Nishikawa, T. (1991). The ascidians of the Japan Sea 2. Publ. Seto Mar. Biol. Lab. 35(1/3): 25-170.

Van Name, W.G., 1945. The North and South American ascidians. Bull. Am. Mus. Nat. Hist. 84, 1-475.

**DIAGNOSTIC CHARACTERS (see Fig. 3)**

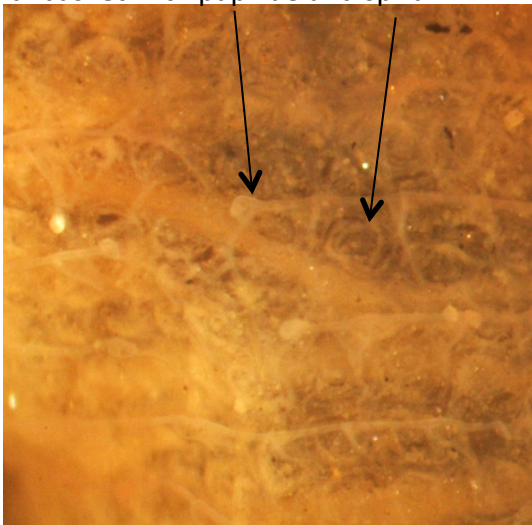
- Oral and atrial siphons separated, with atrial siphon located towards anterior end
- Oral siphon typically with 7-8 lobes, atrial with 6 lobes
- Tentacles simple
- Gut on right side of body
- Branchial folds absent, brachial papillae present
- Spiral stigmata (**Fig. 2**)
- Siphon circular muscles well-developed, extending down into the main part of the body in larger specimens; prominent transverse and oblique muscle bands extend to the center of the body (**Fig. 1**).
- Tunic thin, transparent, colorless in ethanol, covered in fine sand grains, and with many fine, irregular processes varied in length (**Fig 5**).

**Comments:**

*Corella japonica* is an introduced species collected locally for the first time by M. Nydam in June 2023 (personal communication). It is distinguished from *C. willmeriana* Herdman 1898 by strong prominent oblique and longitudinal muscle bands extending towards the center of the body, absent from *C. willmeriana*.

*Corella japonica* is distinguished from *Ascidia* and *Ascidiella* spp by having the gut on the right side of the body rather than left, and the possession of spiral stigmata rather than straight (**Fig. 4**). In addition, like *Corella*, *Ascidia* have branchial papillae, while *Ascidiella* do not.

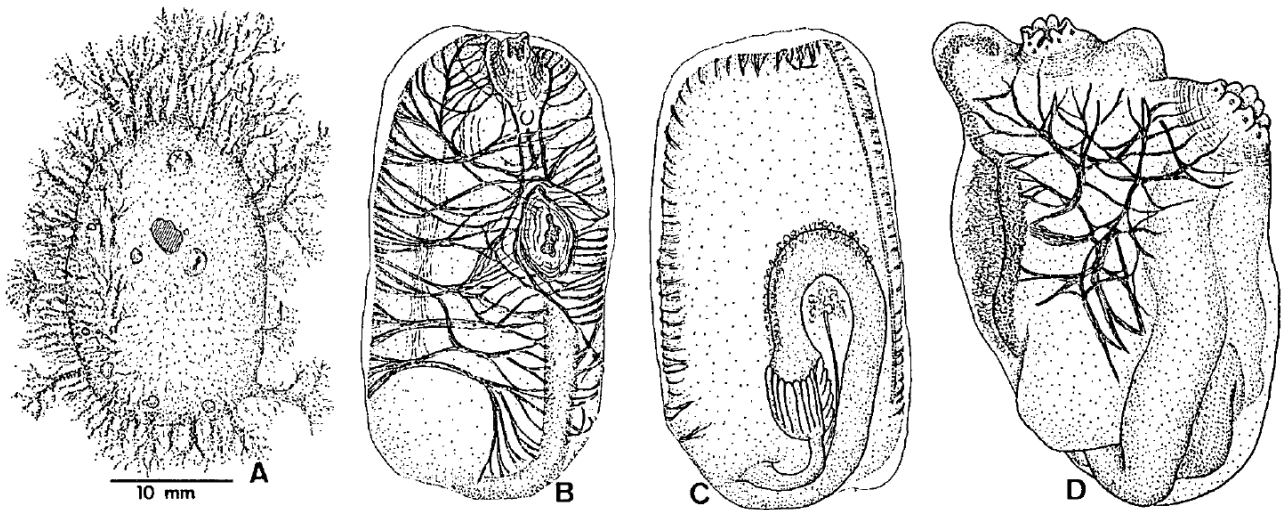
**Fig. 2.** Branchial basket with papillae and spiral stigmata.



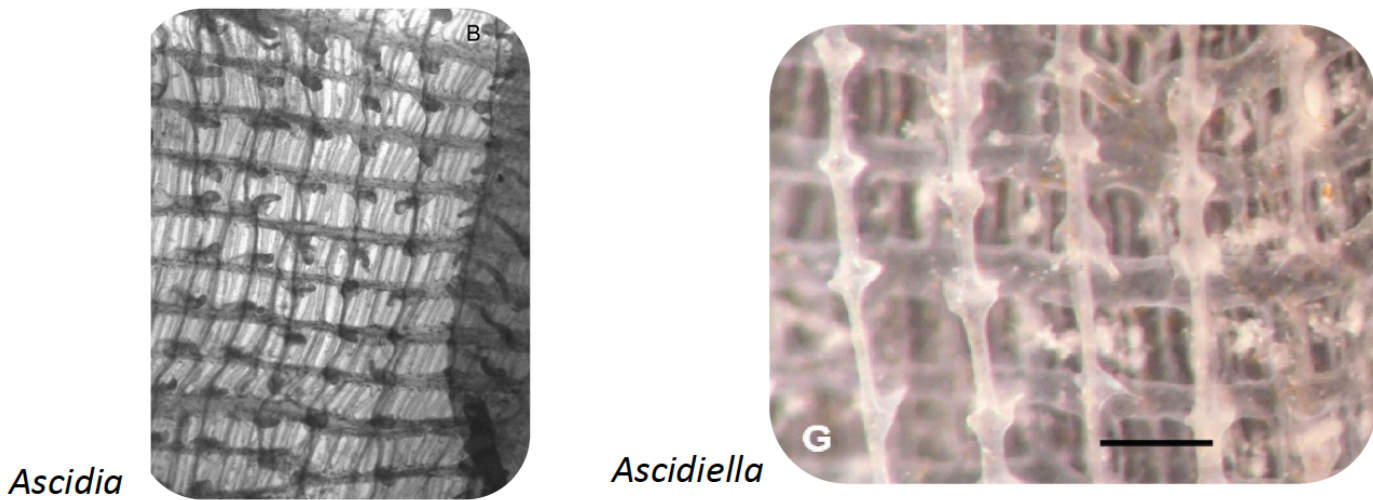
**Fig. 1.** Entire Bight'23 Stn 12133 specimen, right side



Note strong circular and longitudinal musculature surrounding body



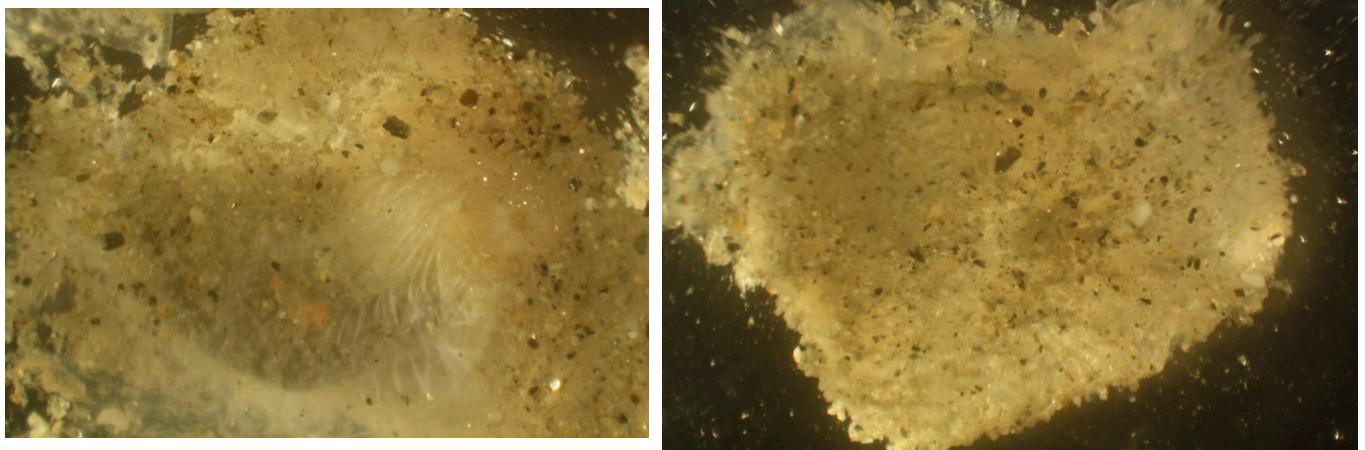
**Fig. 3.** *Corella japonica* Herdman. A-C. 24 mm long specimen from off Amino-cho, Kyoto Pref. (Collection F-1); D. 8 mm long specimen from Oki Isis (N). A. left side of the whole body; B & D. left side of mantle body; C. right side of mantle body. **From Nishikawa (1991)**



*Scidia*

*Ascidiella*

**Fig. 4.** *Scidia* vs. *Ascidiella* showing presence/absence of papillae and straight stigmata. Straight. Courtesy of G. Lambert via M. Nydam.



**Fig. 5.** *Corella japonica* tunic of 2 cm and 1.5 cm (left and right, respectively) specimens from Station B23-12133.