

Species: SARSIELLA SP A (N. SP) Museum Number: 170 Q

Describer: _____ Date: _____ Family: SARSELLIDAE

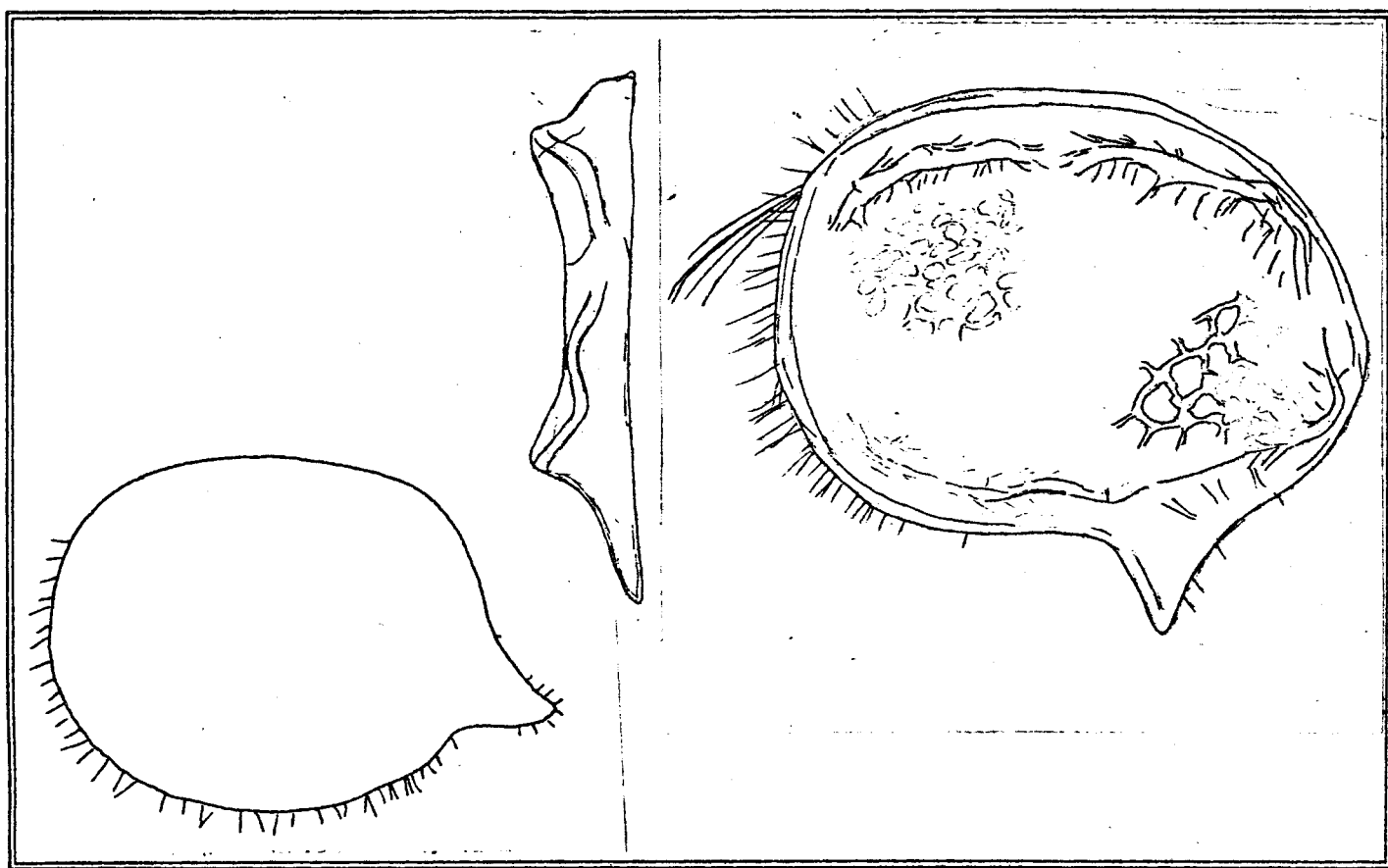
Common Name: _____

Source: _____

Synonymy: _____ Location: _____

Distinguishing Characteristics:

- CARAPACE SUBROTUND WITH A POSTERO-VENTRAL SHELL PROCESS
- SURFACE OF SHELL WITH DISTINCT PITS
- RIDGE OF LOW TUBERCLES FOLLOWING SHELL MARGIN FROM POSTERO-DORSAL AREA, ALONG DORSAL MARGIN, ANTERIOR MARGIN, AND BACK TO POSTERO-VENTRAL AREA
- VENTRAL AND POSTERIOR MARGINS WELL CILIATED



ONE THICK CARAPACE, LESS HAIRY
 ONE THIN CARAPACE, VERY HAIRY ON MARGINS

Ovigerous: J F M A M J J A S O N D

Juvenile: J F M A M J J A S O N D

Remarks:

Oxnard 60' 90'

Santa Monica Bay 16.2

Santa Monica Bay 6.2

OCSO NI-2 2/15 48'

| | | | | |
|-------------------|-------------------|-------------------|-------------------|-------------------|
| 1 IBP MSOR | 2 IBP MSOR | 3 IBP MSOR | 4 IBP MSOR | |
| 5 IBP MSOR | 6 IBP MSOR | 7 IBP MSOR | 8 IBP MSOR | |
| 9 IBP MSOR | 10 IBP MSOR | 11 IBP MSOR | 12 IBP MSOR | |
| 13 IBP MSOR | 14 IBP MSOR | 15 IBP MSOR | 16 IBP MSOR | |
| 17 IBP MSOR | 18 IBP MSOR | 19 IBP MSOR | 20 IBP MSOR | |
| 21 IBP MSOR | 22 IBP MSOR | 23 IBP MSOR | 24 IBP MSOR | |
| 25 IBP MSOR | 26 IBP MSOR | 27 IBP MSOR | 28 IBP MSOR | |
| 29 IBP MSOR | 30 IBP MSOR | 31 IBP MSOR | 32 IBP MSOR | |
| 33 IBP MSOR | 34 IBP MSOR | 35 IBP MSOR | 36 IBP MSOR | |
| 37 IBP MSOR | 38 IBP MSOR | 39 IBP MSOR | 40 IBP MSOR | 41 IBP MSOR |
| 42 IBP MSOR | 43 IBP MSOR | 44 IBP MSOR | 45 IBP MSOR | 46 IBP MSOR |

I intertidal
 B benthic
 P pelagic
 M mud
 S sand
 G gravel
 R rock

