

Eusarsiella thominx

Class Ostracod, Order Myodocopida, Family Sarsiellidae

DIAGNOSTIC CHARACTERS:

Carapace: Oval in lateral view with tapering and well developed posteroventral caudal process. Incisor absent. Lateral surface with several ribs.

Ornamentation: Dorsal rib paralleling dorsal margin. Ventral rib paralleling ventral margin. Surface of carapace with abundant tapering spines between and bordering numerous shallow fossae. Bottom of fossae are bare. Anterior and ventral edges of carapace with long bristles.

Infold: Anterior infold with minute bristle at midheight near inner edge. Infold of caudal process with 7-9 small bristles forming irregular row near base of process. Inner margin of infold anterior to caudal process with few minute bristles. Posterior infold with 2 setal bristles.

Selvage: Anterior, ventral, and posterior selvage with broad lamellar prolongation with bare outer edge; selvage extending outward from tip of caudal process with square end.

DIAGNOSTIC CHARACTERS:

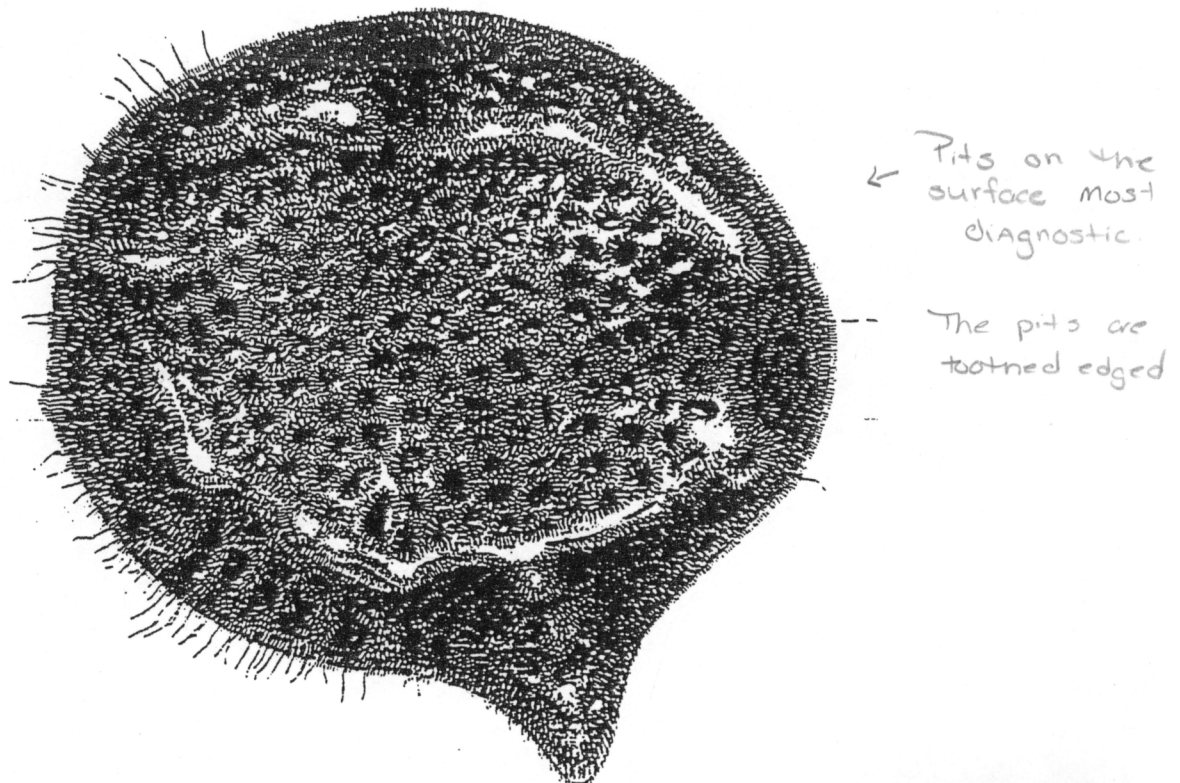


Fig. 1. *Eusarsiella thominx*. lateral view of holotype, length 1.44 mm.