

2300

Species: Euphilomedes producta

Museum Number: 170-F

Describer: Poulsen

Date: 1962

Family: PHILOMEDIIDAE
Cypridinidae

Common Name: _____

Source: Poulsen: Ostracoda-Myodocopa Part I. Dana Report # 57, 1962.

Synonymy: _____ Location: _____

Distinguishing Characteristics:

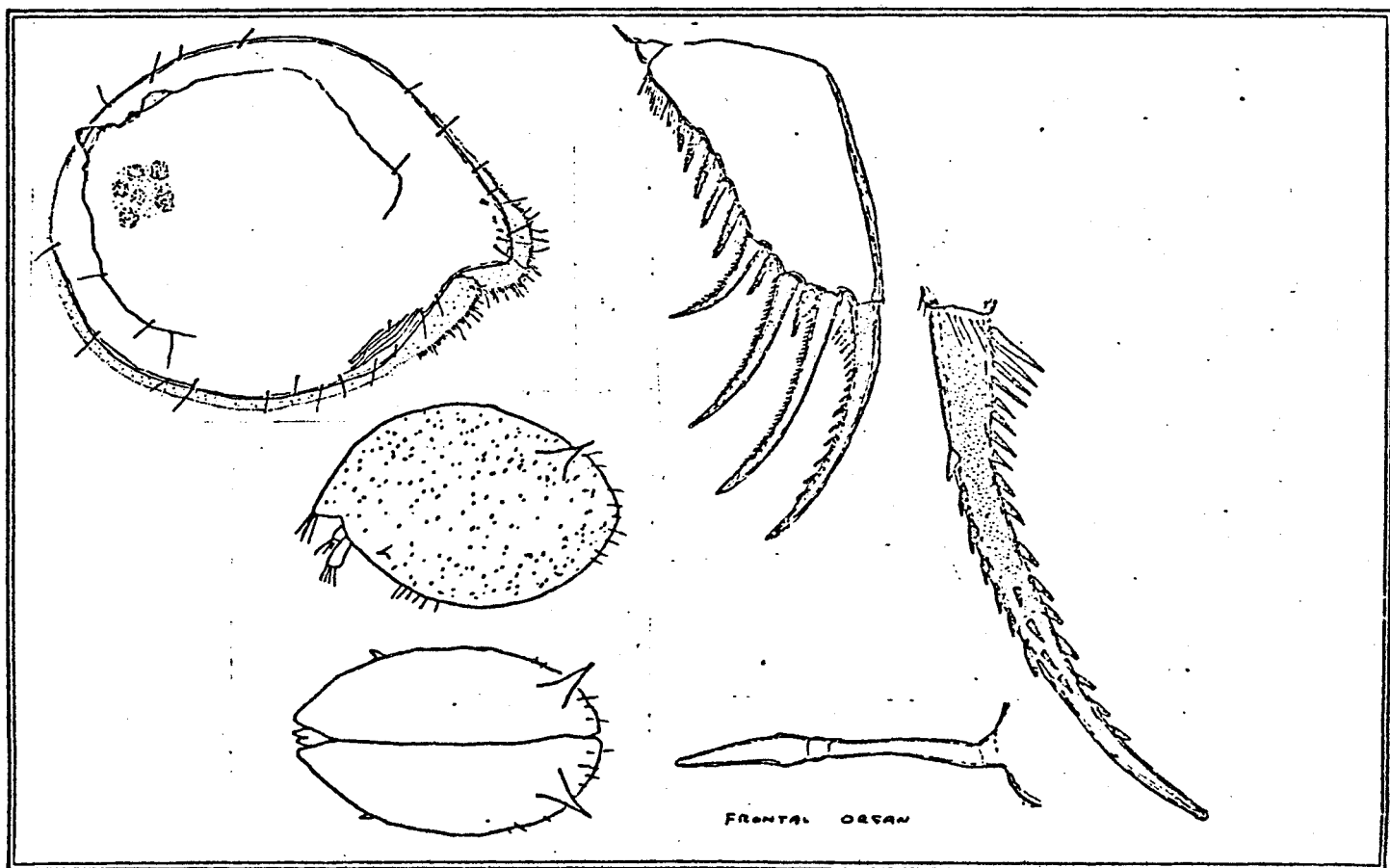
Large posterior directed spine in the postero-dorsal area of
carapace

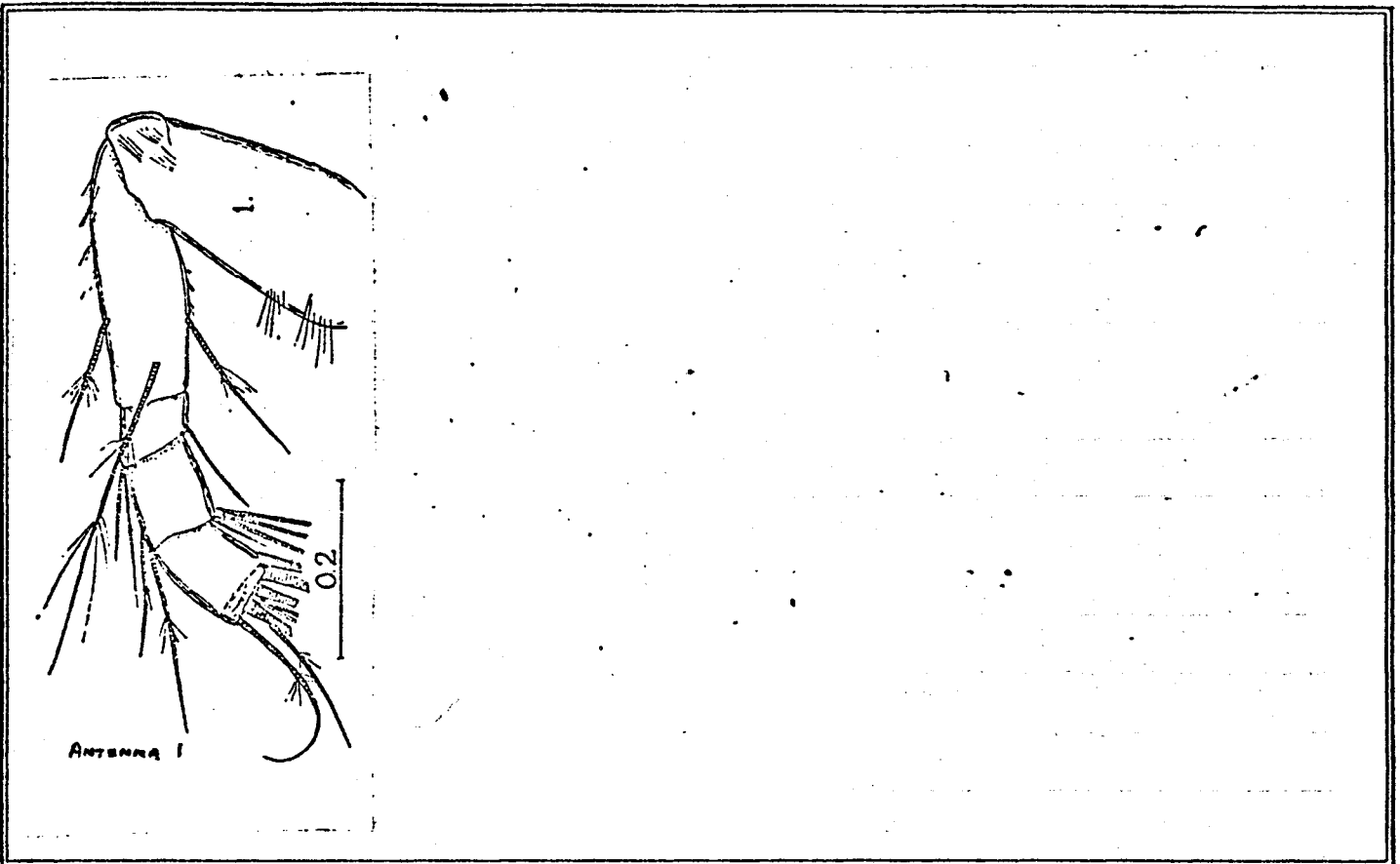
Small anteriorly directed spine in antero-ventral area of carapace

Rostral sinus distinct

Caudal furca with 11 claws arranged 2L-1S-1L-1S-1L-5S

Cleaning foot with 4 short distal filaments, and about 4 more fila-
ments about 10 segments back from the distal end.





Ovigerous: J F M A M J J A S O N D

Juvenile: J F M A M J J A S O N D

1	2	3	4	
IBP	IBP	IBP	IBP	
MSGR	MSGR	MSGR	MSGR	
5	6	7	8	
IBP	IBP	IBP	IBP	
MSGR	MSGR	MSGR	MSGR	
9	10	11	12	
IBP	IBP	IBP	IBP	
MSGR	MSGR	MSGR	MSGR	
13	14	15	16	
IBP	IBP	IBP	IBP	
MSGR	MSGR	MSGR	MSGR	
17	18	19	20	
IBP	IBP	IBP	IBP	
MSGR	MSGR	MSGR	MSGR	
21	22	23	24	
IBP	IBP	IBP	IBP	
MSGR	MSGR	MSGR	MSGR	
25	26	27	28	
IBP	IBP	IBP	IBP	
MSGR	MSGR	MSGR	MSGR	
29	30	31	32	
IBP	IBP	IBP	IBP	
MSGR	MSGR	MSGR	MSGR	
33	34	35	36	
IBP	IBP	IBP	IBP	
MSGR	MSGR	MSGR	MSGR	
37	38	39	40	41
IBP	IBP	IBP	IBP	IBP
MSGR	MSGR	MSGR	MSGR	MSGR
42	43	44	45	46
IBP	IBP	IBP	IBP	IBP
MSGR	MSGR	MSGR	MSGR	MSGR

Remarks:

Coast of Canada
COSS OFF FALL

I intertidal
 B benthic
 P pelagic
 M mud
 S sand
 G gravel
 R rock

