

330015

Species: Euphilomedes carcharodonta

Museum Number: 170-H

Describer: Smith

Date: 1951

Family: PULMONOIDEAE
~~Cypridinidae~~

Common Name: _____

Source: Smith: Further Ostracoda of the San Diego Region (Journ. Fish. Res. Bd. Can., 9, 1952)

Synonymy: _____ Location: _____

Distinguishing Characteristics:

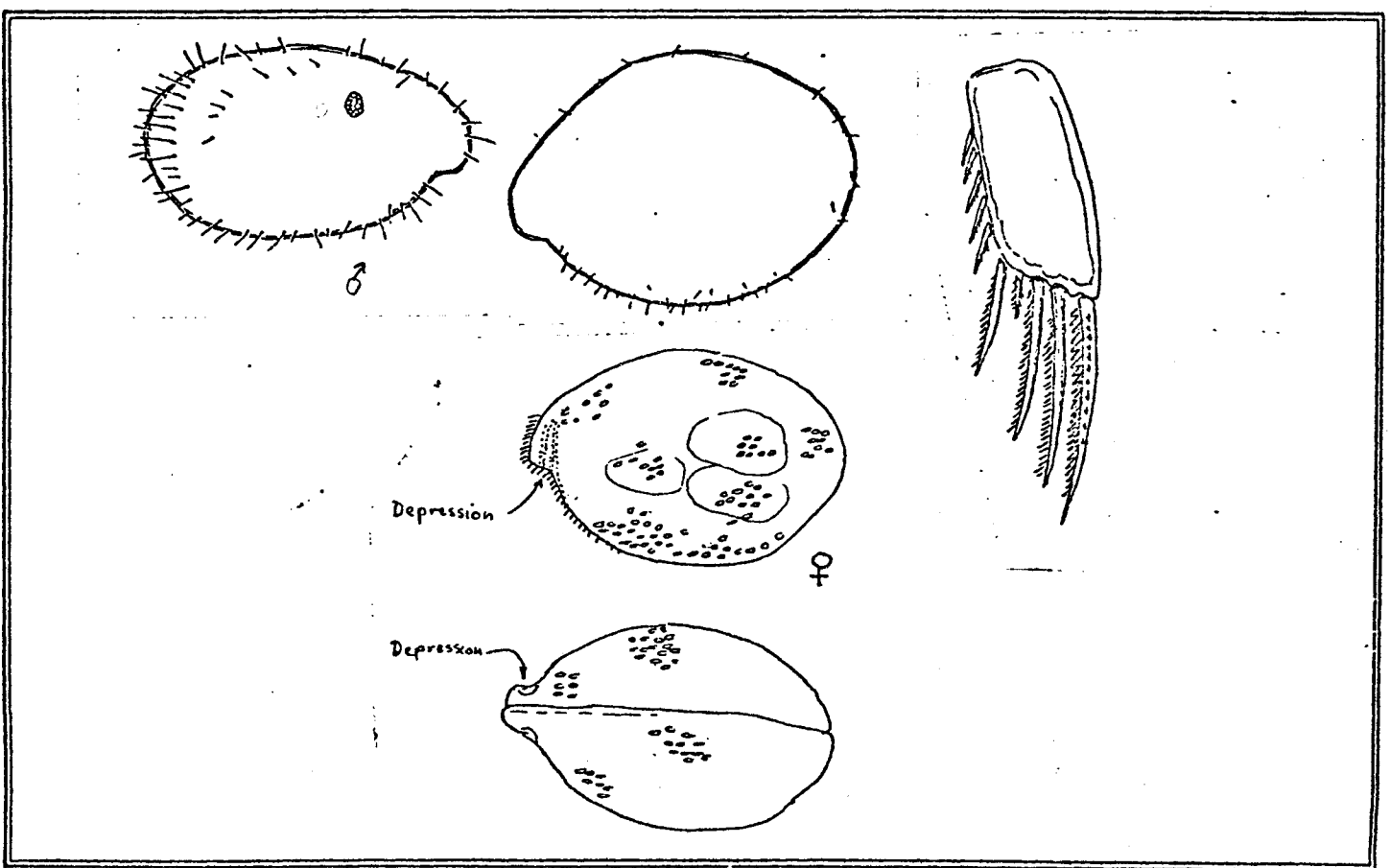
♂ Shell somewhat elongate (height 61% of length)

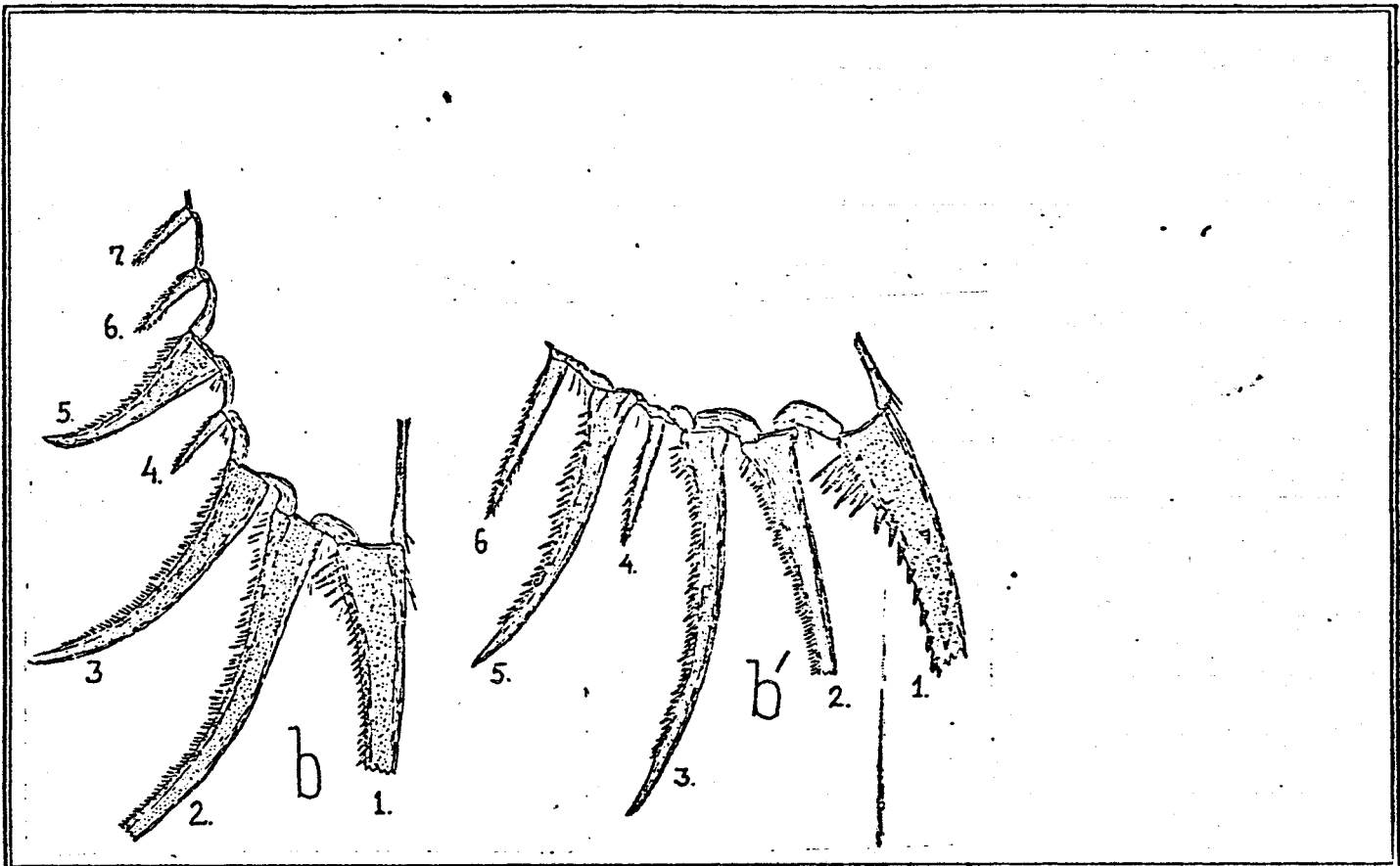
Rostrum rather small, somewhat pinched, sinus shallow

Rt valve slightly smaller than left

♀ Shell slightly rounder than ♂ (height at 74% of length)

Caudal furca with 10 paired claws arranged 3L-1S-1L-5S





Ovigerous: J F M A M J J A S O N D

Juvenile: J F M A M J J A S O N D

1	2	3	4	
IBP	IBP	IBP	IBP	
MSGR	MSGR	MSGR	MSGR	
5	6	7	8	
IBP	IBP	IBP	IBP	
MSGR	MSGR	MSGR	MSGR	
9	10	11	12	
IBP	IBP	IBP	IBP	
MSGR	MSGR	MSGR	MSGR	
13	14	15	16	
IBP	IBP	IBP	IBP	
MSGR	MSGR	MSGR	MSGR	
17	18	19	20	
IBP	IBP	IBP	IBP	
MSGR	MSGR	MSGR	MSGR	
21	22	23	24	
IBP	IBP	IBP	IBP	
MSGR	MSGR	MSGR	MSGR	
25	26	27	28	
IBP	IBP	IBP	IBP	
MSGR	MSGR	MSGR	MSGR	
29	30	31	32	
IBP	IBP	IBP	IBP	
MSGR	MSGR	MSGR	MSGR	
33	34	35	36	
IBP	IBP	IBP	IBP	
MSGR	MSGR	MSGR	MSGR	
37	38	39	40	41
IBP	IBP	IBP	IBP	IBP
MSGR	MSGR	MSGR	MSGR	MSGR
42	43	44	45	46
IBP	IBP	IBP	IBP	IBP
MSGR	MSGR	MSGR	MSGR	MSGR

Remarks:

Coast of Canada

LONG BEACH HARBOR

SAN MONICA BAY

MONTEREY BAY

SAN DIEGO BAY NUC *very poor*

MISSION CAY

W. OCCUR 4' SERRAVALLE

I intertidal
 B bathic
 P pelagic
 M mud
 S sand
 G gravel
 R rock

