

SCAMIT CODE: PL 41, LACO 27

Date Examined: May 14, 1984

Synonymy: None

Literature Cited:

Schultz, G. A. 1969. How to know the marine isopod crustaceans. Wm. C. Brown Company Publishers. 359 pp. (see p. 224)

Schultz, G. A. 1966. Submarine canyons of southern California. Part IV, Systematics: Isopoda. Allan Hancock Pac. Exped. 27(4): 56 pp. (see p. 19)

Menzies, R. J., and J. L. Barnard. 1959. Marine isopoda on coastal shelf bottoms of southern California: Systematics and ecology. Pac. Nat. 1(11): 35 pp. (see p. 27)

Monod, T. 1926. Les Gnathyiidae. Soc. Sci. Nat. Maroc. Mem. 13:1-667.

Diagnostic Characters:

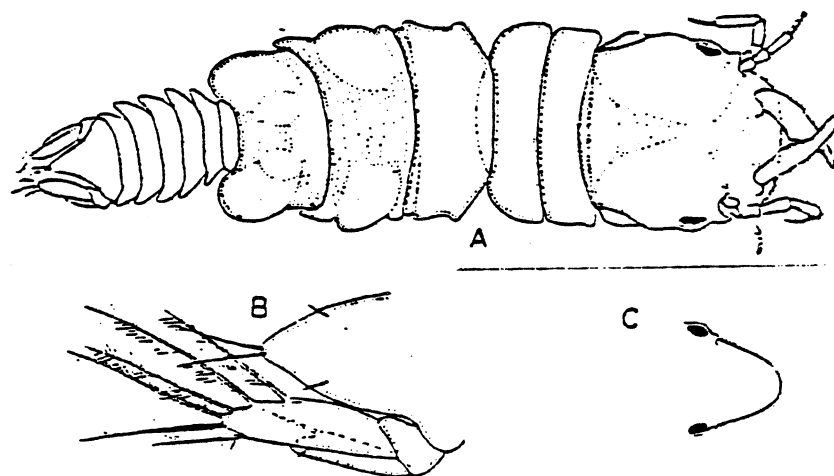
Cephalon as long as wide. Frons broad, slightly convex, minutely crenulated, lacking dorsal projections. Inner face of mandible bears three teeth.

Variability: As noted

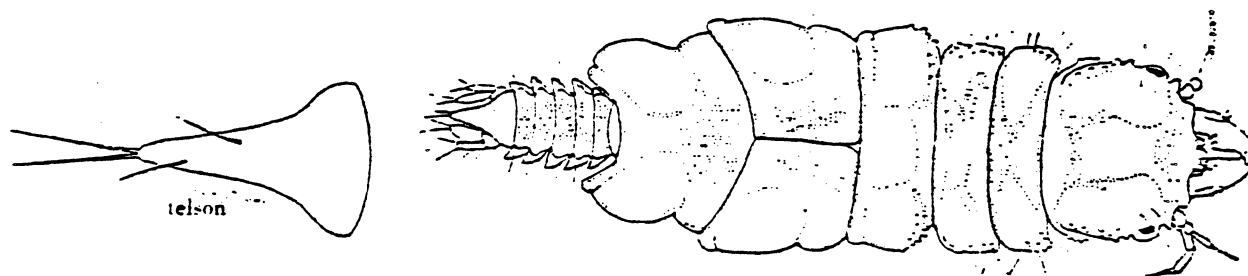
Related Species and Character Differences:

*Gnathia productatridens* - trifid frons

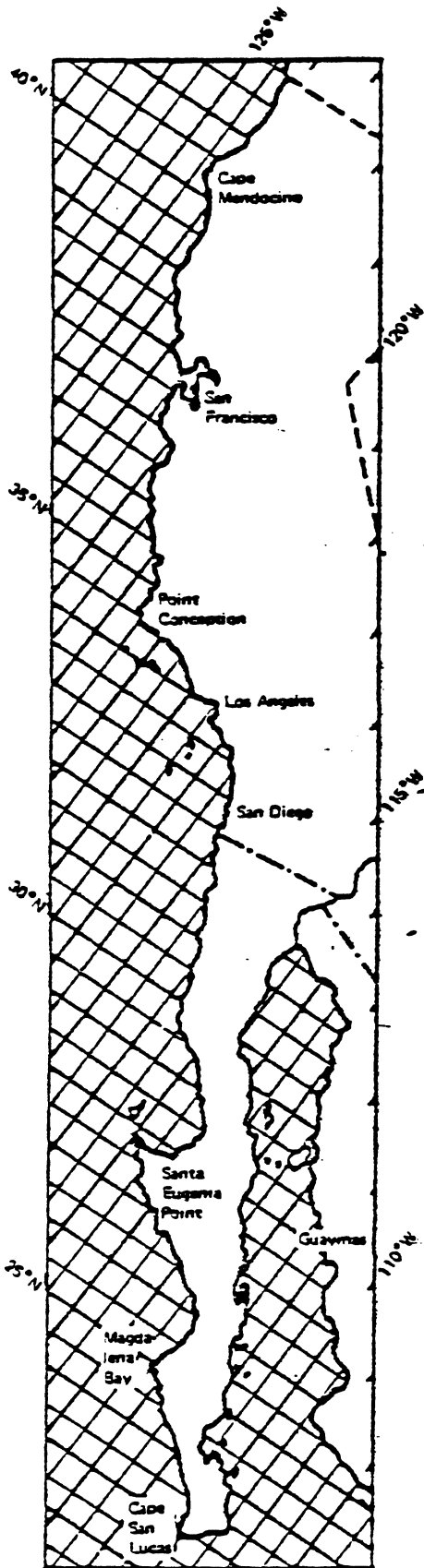
*Gnathia sanctaegrucis* - pointed projection from anterior margin of cephalon



*Gnathia crenulatifrons* Monod. A. male. 4 mm., dorsal view; B. male telson and uropod; C. female. 4 mm., head.



*Gnathia productatridens* n. sp.



Depth Range: 5-1258 fms

Distribution:

Southern California coastal shelves and slopes, 5-100 fms; Santa Catalina Island, 40-136 fms; Santa Catalina Basin, 688 fms.