

Species: Mesanthura occidentalis \_\_\_\_\_ Museum Number: 137

Describer: Menzies and Barnard, 1959 Date: \_\_\_\_\_ Family: Anthuridae

Common Name: \_\_\_\_\_

Source: Marine Isopoda on Coastal Shelf Bottoms of Southern California: Systematics and Ecology. Pacific Naturalist, Vol. 1, No. 11.

Synonymy: \_\_\_\_\_ Location: Point Conception to Point Fermin, California  
Depth: 10 Fathoms

Distinguishing Characteristics:

Pigment pattern is diagnostic, morphological differences being minor. Cephalon with transverse band just behind the eyes. Body segments 1 to 6 each with a rectangular outline of pigment, characteristically discontinuous on each segment. Segment 7 with a posterior transverse band. Pleon and pleotelson dorsally spotted.

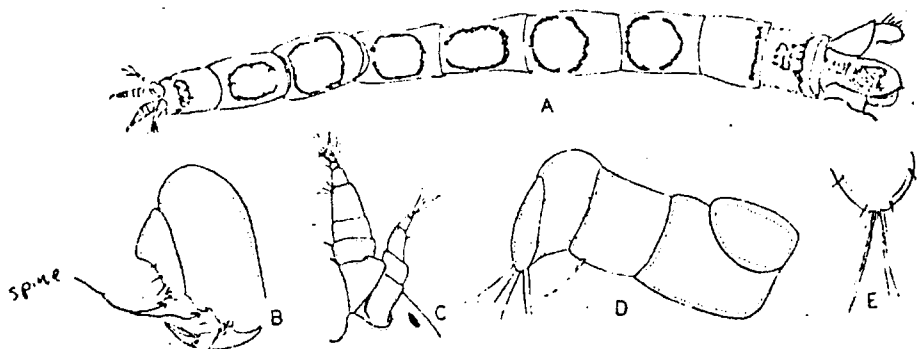


Fig. 14. *Mesanthura occidentalis* n. sp. A-E. Holotype, female, 7 mm. A. dorsal view; B. gnathopod; C. antennae 1, 2, top and bottom; D. maxilliped; E. apex of pleotelson.

