

## VOUCHER SHEET

**Species name:** *Pleurocope* sp IS1

**Date Examined:** 4 March 2012

**Group:** Isopoda, Family Pleurocopidae

**Voucher By:** Donald B. Cadien

**Voucher Specimen(s):** ISS Bays and Harbors Survey 2011, Station 406AVAL04, rep 1, IDorg 6261QX02, 0.5m depth, clearing sample 30 individuals, ♂, ♀ and manca

---

**SYNONYMY:** *Pleurocope floridensis* of authors NEP, not Hooker, 1985

**LITERATURE:** **Fresi, E. and U.Schieke. 1972.** *Pleurocope dasyura* Walker, 1901 and the Pleurocopidae new family (Isopoda, Asellota). *Crustaceana Supplement* 3, 207-213

**Hooker, A. 1985.** New species of Isopoda from the Florida Middlegrounds (Crustacea: Peracarida). *Proceedings of the Biological Society of Washington* 98(1): 255-280

**Kensley, B. and M. Schotte. 2002.** New species and records of Asellota from the Indian Ocean (Crustacea: Peracarida: Isopoda). *Journal of Natural History* 36:1421-1461

**Wilson, G. D. F. 1987.** The road to the Janiroidea: comparative morphology and evolution of the asellote isopod crustaceans. *Zeitschrift fur zoologische Systematik und Evolutionsforschung* 25(4): 257-280

-----, 1999. Asellota. SCAMIT Newsletter 17(12)

### DIAGNOSTIC CHARACTERS:

1. pereonite 4 lacking lateral process, but bearing a lateral seta; pereonites 1 (♀ only), 5 and 6 with a lateral process and single seta, pereonites 2 and 3 with a lateral process and two setae, the posterior much larger
2. pleotelson tapers strongly from a bulbus base at the level of the uropodal rami, then tapers only slightly to a truncate end
3. tips of ocular tubercles slightly indented distally, with eyes as two lenses at the end of each tubercle
4. dorsal surface of pereonites finely granulated, with scattered granules on the lateral processes, on the cephalon, and on the pleotelson

### RELATED SPECIES AND CHARACTER DIFFERENCES:

1. differs from *Pleurocope* sp A Wilson MS in having the body surface granulated, while such granulation is lacking in *Pleurocope* sp A

2. differs from *Pleurocope floridensis* Hooker 1985 in having a single pair of distal spines on pleopod 1 in the male, vs. 3 in *floridensis*; in having the pleotelson posterior portion less than 50% of the pleotelson length, vs. subequal in *P. floridensis* (both male and female); in having the lateral projections strap-shaped, not tapering as in *P. floridensis*, with some distally widened and ending bluntly, not subacute as in *P. floridensis*; and in having the uropodal endopod (fused to the protopod) broader and more robust than in *P. floridensis*

3. differs from *Pleurocope wilsoni* Kensley and Schotte 2002 in bearing a lateral seta on pereonite 4, absent in *P. wilsoni*; and in having the pleotelson truncate distally, not finely acute

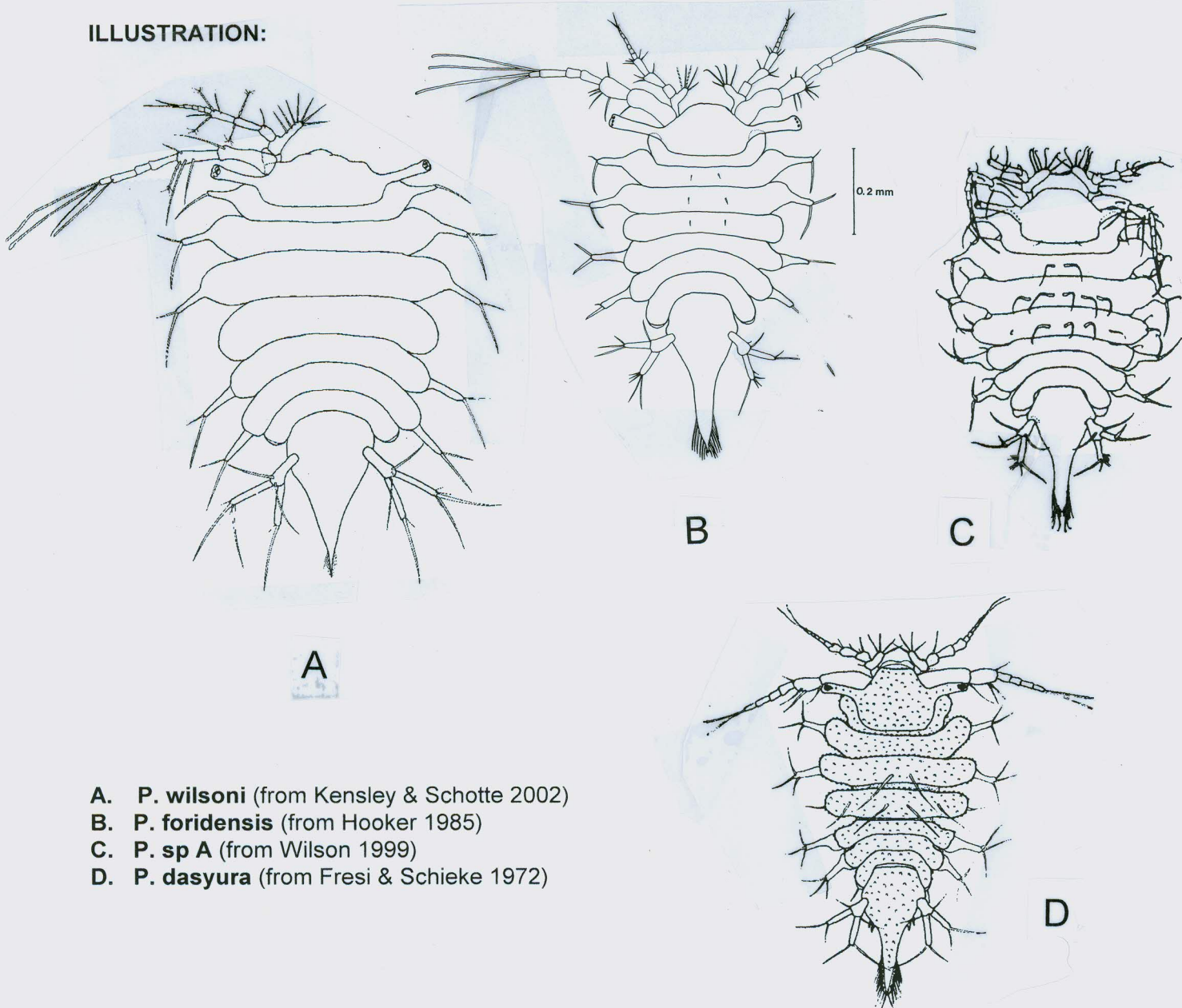
4. differs from *Pleurocope dasyura* (Walker 1901) in lacking the 2 lateral spine pairs on the pleotelson of the male, in having only two setae on the 2<sup>nd</sup>, 3<sup>rd</sup>, 5<sup>th</sup>, and 6<sup>th</sup> pereonites rather than three as in *P. dasyura*, and in having the eyes divided into two separate lenses rather than undivided

**DEPTH RANGE:** 0.5 m

**DISTRIBUTION:** Avalon Harbor to Central California (earlier records as *P. floridensis*), in fouling communities on natural and artificial substrates.

**COMMENT:** There are only three described species of *Pleurocope* worldwide; the type *dasyura* in the Mediterranean, *P. floridensis* in the tropical western Atlantic, and *P. wilsoni* in Thailand and from Aldabra. The present species, and a closely related but different form currently in manuscript by Dr. Buzz Wilson (Australian Museum) also from California, will significantly increase the known diversity in the genus once described. According to Dr. Wilson (pers. comm. 2008), there are very probably many other species which have escaped notice due to their small size, and rubble/fouling habitat.

**ILLUSTRATION:**



- A. *P. wilsoni* (from Kensley & Schotte 2002)
- B. *P. floridensis* (from Hooker 1985)
- C. *P. sp A* (from Wilson 1999)
- D. *P. dasyura* (from Fresi & Schieke 1972)