

Species: Lamprops quadriplicata

Museum Number: 77

Describer: Smith Date: 1879 Family: Lampropidae

Common Name: _____

Source: Smith, S.I. Stalk Eyed Crustaceans of the Atlantic Coast of North

America, North of Cape Cod - (Trans. Conn. Acad. Arts & Sce 5, 1879)

Synonymy: Lamprops krasheninnikovi, Derzhavin 1926 Location: _____

Lamprops quadriplicata krasheninnikovi, see Lomakina: 1958

See Given 1965 for L. quadriplicata (Synonymized subspecies)

Distinguishing Characteristics:

4 Oblique ridges on carapace (some variability in distinctness present)

5 Apical spines on telson, and 1-4 pairs of Lateral Telsonic spines

Anterior margin of carapace truncate with slight sinus

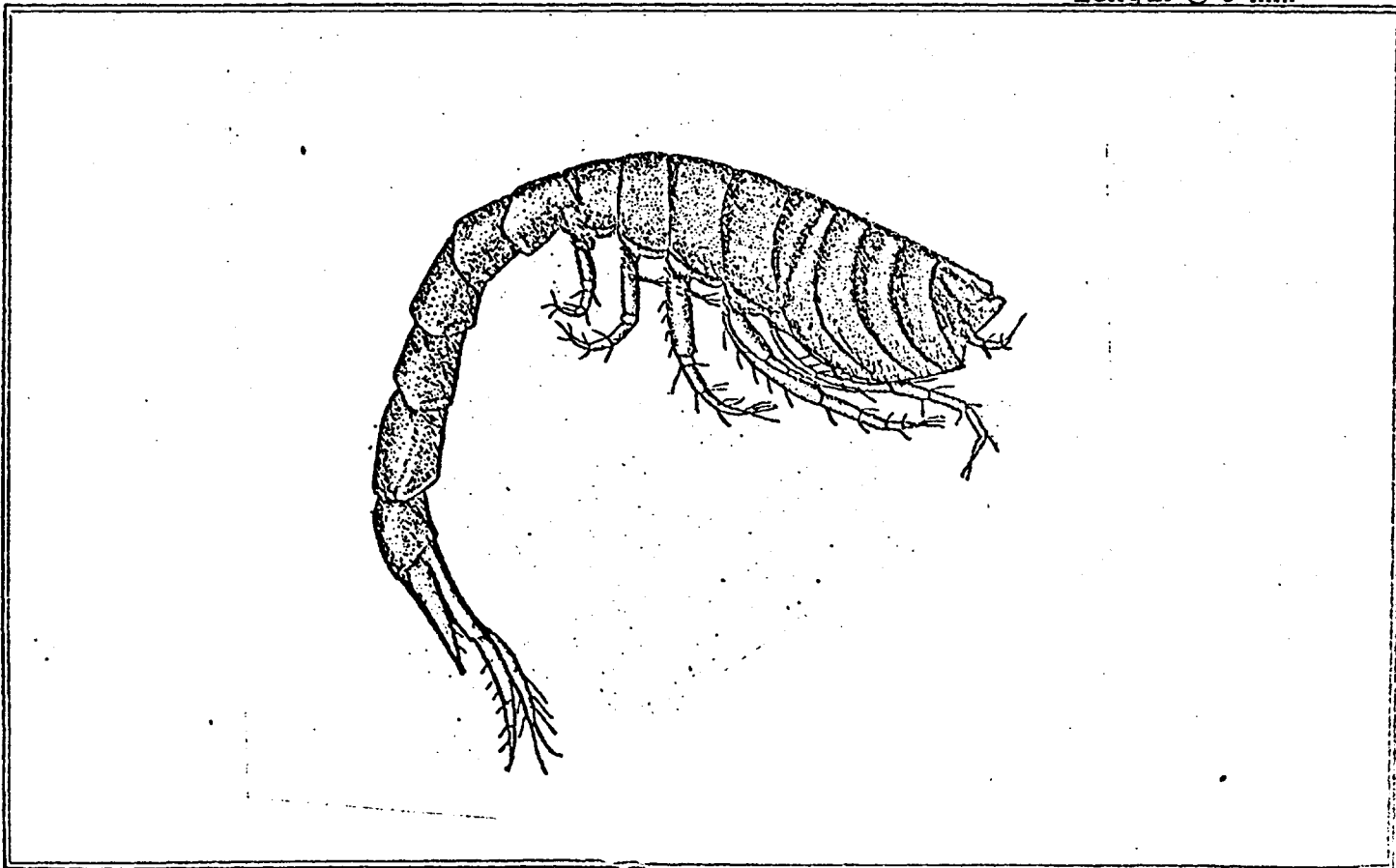
Peduncle of uropod subequal in length to telson, armed with about 10 spines

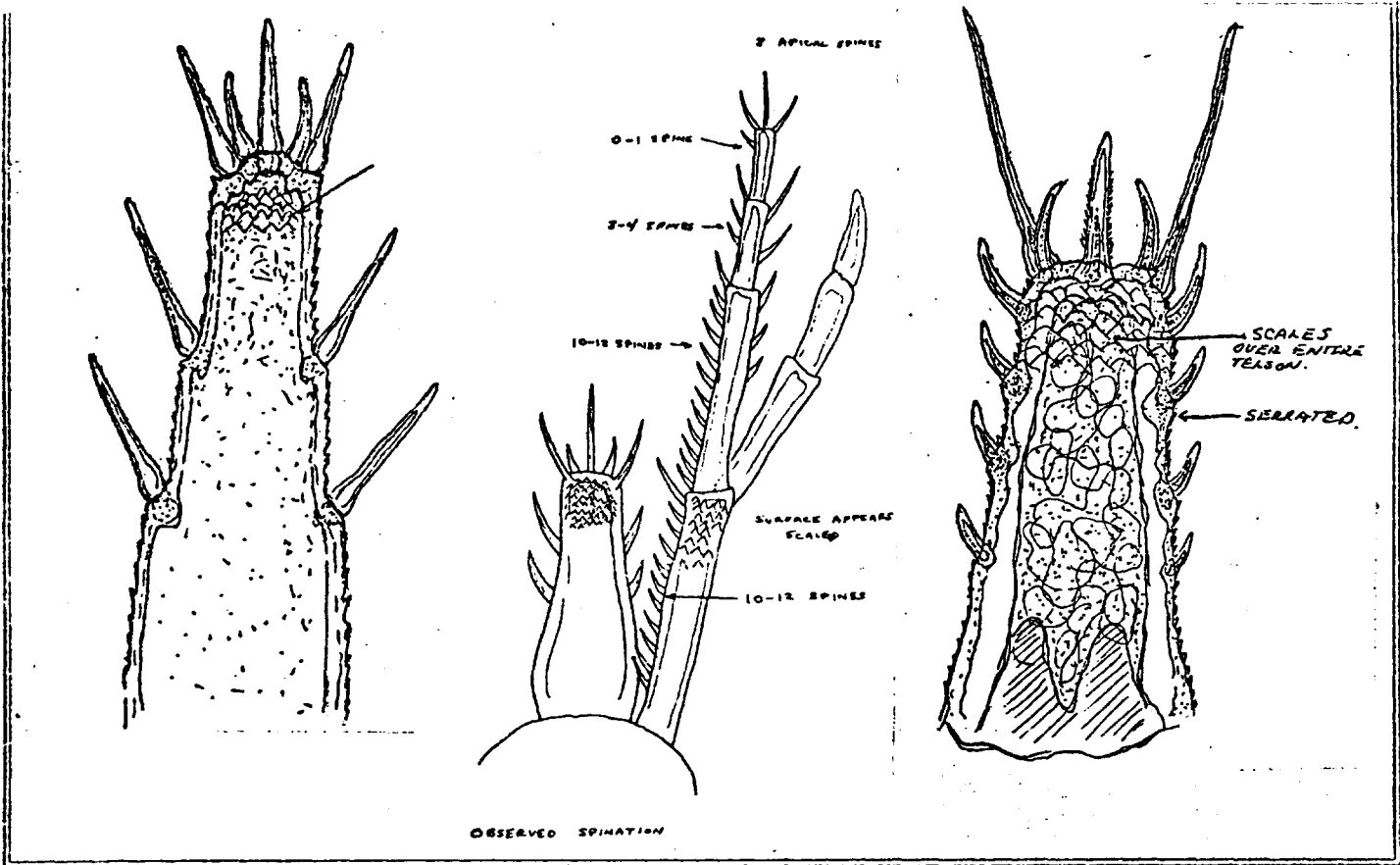
on inner margin

Telson about as long as pleonal segment 5 and about twice as long as

pleonal segment 6

Length @ 9 mm





OBSERVED SPINATION

Ovigerous: J F M **A** M J J A S O N D

Juvenile: J F M A M J J A S O N D

1	2	3	4	
IBP	IBP	IBP	IBP	
MSGR	MSGR	MSGR	MSGR	
5	6	7	8	
IBP	IBP	IBP	IBP	
MSGR	MSGR	MSGR	MSGR	
9	10	11	12	
IBP	IBP	IBP	IBP	
MSGR	MSGR	MSGR	MSGR	
13	14	15	16	
IBP	IBP	IBP	IBP	
MSGR	MSGR	MSGR	MSGR	
17	18	19	20	
IBP	IBP	IBP	IBP	
MSGR	MSGR	MSGR	MSGR	
21	22	23	24	
IBP	IBP	IBP	IBP	
MSGR	MSGR	MSGR	MSGR	
25	26	27	28	
IBP	IBP	IBP	IBP	
MSGR	MSGR	MSGR	MSGR	
29	30	31	32	
IBP	IBP	IBP	IBP	
MSGR	MSGR	MSGR	MSGR	
33	34	35	36	
IBP	IBP	IBP	IBP	
MSGR	MSGR	MSGR	MSGR	
37	38	39	40	41
IBP	IBP	IBP	IBP	IBP
MSGR	MSGR	MSGR	MSGR	MSGR
42	43	44	45	46
IBP	IBP	IBP	IBP	IBP
MSGR	MSGR	MSGR	MSGR	MSGR

Remarks:

Gloucester Harbor, Mass

13-18M

Newfoundland 67M

Akkeshi Bay, Japan

Peter The Great Bay, USSR

19 - 44'

I intertidal
 B benthic
 P pelagic
 M mud
 S sand
 G gravel
 R rock

