

= *D. crenellata*  
*Crenellata*

Species: Diastylis

Museum Number: 221

Describer: Undescribed Date: \_\_\_\_\_ Family: Diastylidae

Common Name: \_\_\_\_\_

Source: \_\_\_\_\_

Synonymy: \_\_\_\_\_ Location: \_\_\_\_\_

Distinguishing Characteristics:

Carapace spinose except for large depressed sculptured areas, around the eye lobe,  
on top of the head and behind the subrostral notch.

Telson with two terminal and 4-6 pairs of lateral spines

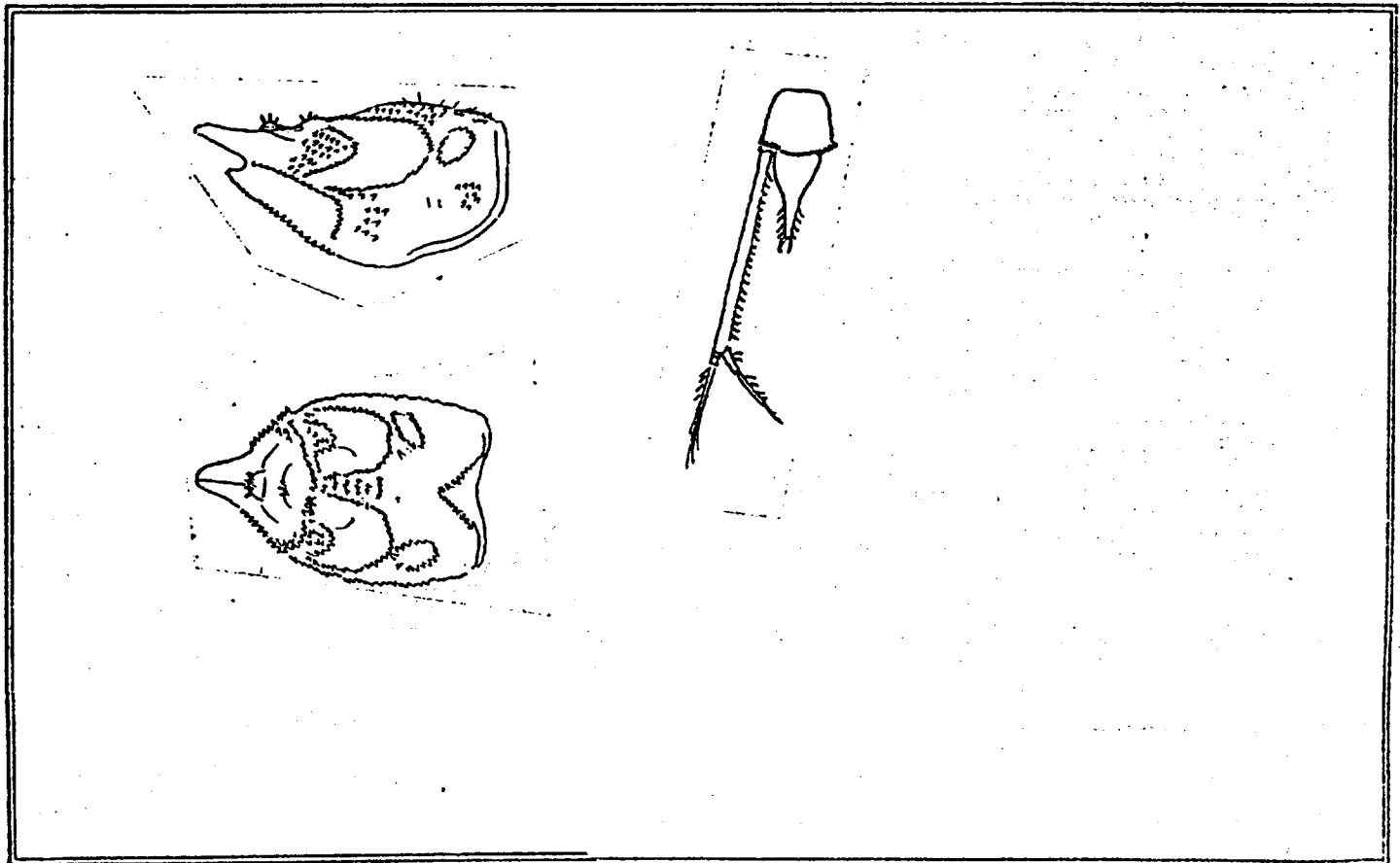
Carapace wide and inflated

1st thoracic segment visible only dorsally

5th thoracic segment with dorso-lateral posteriorly directed points.

Frontal border of thoracic segments serrate

4-6 spines on top of eye lobe and on secondary lobe behind eye



Ovigerous: J F M A M J J A S O N D

Juvenile: J F M A M J J A S O N D

1 IBP MSGR	2 IBP MSGR	3 IBP MSGR	4 IBP MSGR	
5 IBP MSGR	6 IBP MSGR	7 IBP MSGR	8 IBP MSGR	
9 IBP MSGR	10 IBP MSGR	11 IBP MSGR	12 IBP MSGR	
13 IBP MSGR	14 IBP MSGR	15 IBP MSGR	16 IBP MSGR	
17 IBP MSGR	18 IBP MSGR	19 IBP MSGR	20 IBP MSGR	
21 IBP MSGR	22 IBP MSGR	23 IBP MSGR	24 IBP MSGR	
25 IBP MSGR	26 IBP MSGR	27 IBP MSGR	28 IBP MSGR	
29 IBP MSGR	30 IBP MSGR	31 IBP MSGR	32 IBP MSGR	
33 IBP MSGR	34 IBP MSGR	35 IBP MSGR	36 IBP MSGR	
37 IBP MSGR	38 IBP MSGR	39 IBP MSGR	40 IBP MSGR	41 IBP MSGR
42 IBP MSGR	43 IBP MSGR	44 IBP MSGR	45 IBP MSGR	46 IBP MSGR

Remarks:

**33** 26-75 fm

LAZD 199m

LA5R 136m

MMS 014/945' Pt. Sancha  
030/328'

036/1640'

042/328'

052/328'

055/1928'

058/330'

065/355'

073/328'

076/1250'

077/360'

080/645'

094/320' Tajiques

I Intertidal  
B benthic  
P pelagic  
M mud  
S sand  
G gravel  
R rock

