

SCAMIT CODE: None

Date Examined: January 1999 ; Rev 3/29/2023

## SYNONYMY

Vouchered by: Dean Pasko

6/8/2001: immature male *Cyclaspis nubila*; 1/17/2006: *Cyclaspis* sp

G based on "large male" from CSD Stn 2042(2), 7/18/2005, 65m

Voucher sheet prepared by: Dean Pasko

## LITERATURE:

SCAMIT Newsletters: Vol 4, No. 12; Vol. 8, No. 2; Vol. 14, No. 6.

Cadien, D.B. 1996. Key to the Bodotriidae of California.

Zimmer, C. 1936. California Crustacea of the order Cumacea. Proc. U.S. Nat'l Mus. 83(2992):423-439.

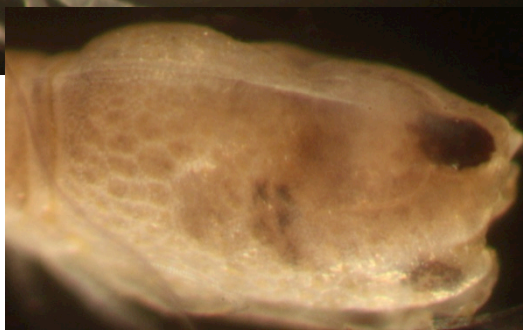
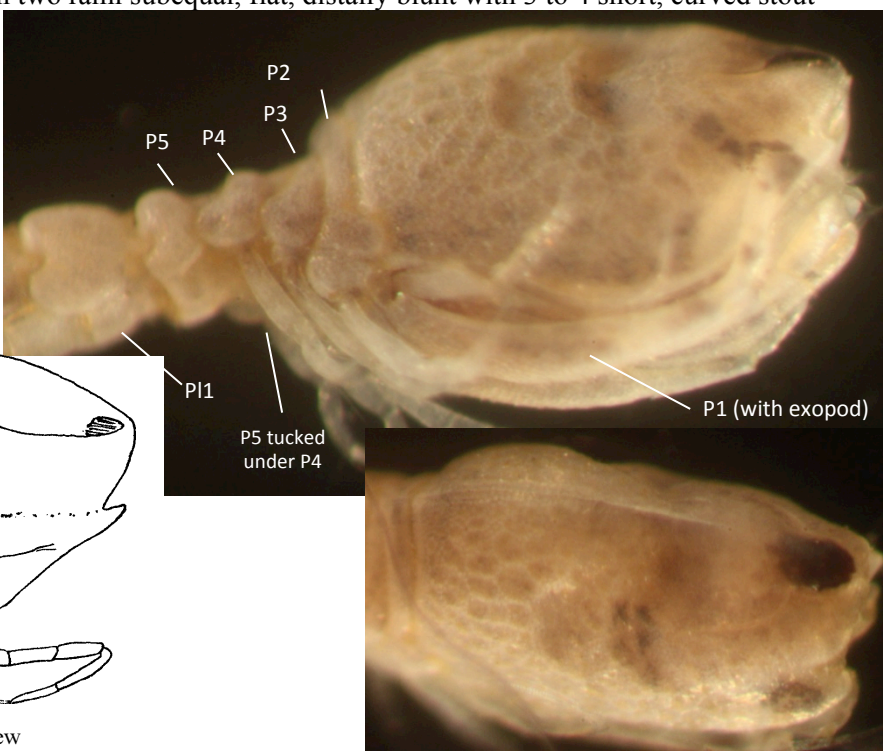
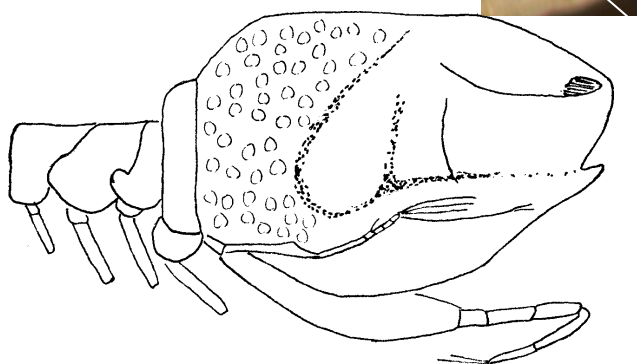
Zimmer, C. 1980. Cumaceans of the American Atlantic Boreal Coast Region (Crustacea: Peracarida). Smith. Contr. Zool. No 302: 29 pp.

## DIAGNOSTIC CHARACTERS:

### CHARACTERS

From two (2) immature male specimens ~3.5mm TL, 1.0mm CL

- Eyelobe rounded, eye prominent, dorsal, dark maroon, 3 – 4 faint lenses visible
- Pseudorostrum with smooth, blunt anterior margin
- Carapace with strong dorsal crest running nearly the entire length, crest teeth absent; surface sculpturing consists of unpatterned pitting posteriorly and ventrally, and two relatively broad, smooth lateral sulci, each defined by minutely granular ridges
- Antennal sinus prominent, slightly flaring, smooth
- Exopods on Mxpd & pereopod 1
- Pereonite 1 fused with carapace; pereonites 1 & 2 postero-dorsally pointed; pereonite 3 reduced; pereonites 4 & 5 broad
- Coxae of pereonites 3 – 5 and pleonite 1 not laterally produced, but extending posteriorly as rounded lobes
- Uropod peduncle naked, longer than last abdominal segment, slightly longer than rami
- Uropod inner ramus uniarticulate, outer ramus biarticulate
- Rami subequal, naked except for terminal spines, each with plumose setae
- Pleopods, 4 pairs each biramus, with two rami subequal, flat, distally blunt with 3 to 4 short, curved stout terminal setae.



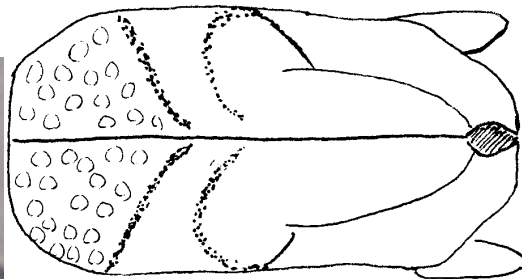
---

## RELATED SPECIES AND CHARACTER DIFFERENCES:

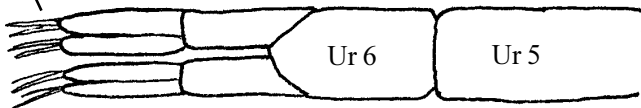
*Cyclaspis* sp SD3 resembles *Cyclaspis* sp C in the general shape of the carapace, dorsal crest, and strong antennal sinus, but is distinguished by the shallow lateral ridges and depressed areas on carapace and the naked uropods. It appears to be distinguished from all other *Cyclaspis* from the SCB by the absence of any spination on the uropods.

DEPTH RANGE: 7 to 88m

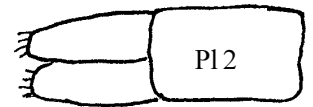
DISTRIBUTION: San Diego, CA, off La Jolla Canyon  
(CSDMWWD Station B-11, 8 Apr1998, 288 ft)  
Santa Monica Bay, 7m, Chevron Ocean Outfall Station B8, 3-Nov-2022



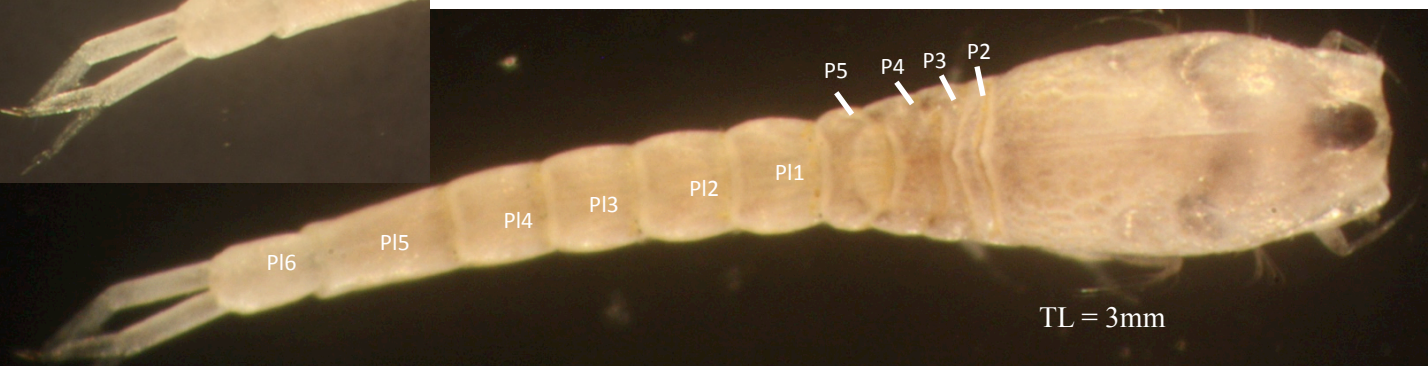
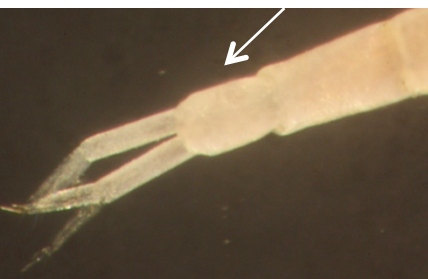
*Cyclaspis* sp SD3: carapace, dorsal view



*Cyclaspis* sp SD3: abdominal somites 5 & 6 and uropods, dorsal view.



*Cyclaspis* sp SD3: pleopod 2, dorsal view

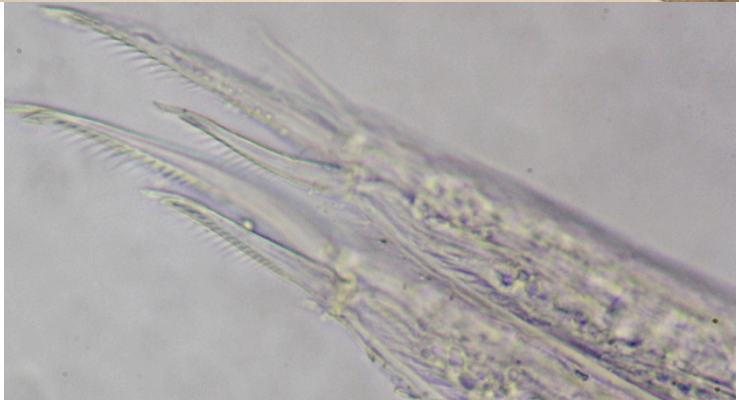


*Cyclaspis* sp SD3 differs from known eastern Pacific species by the absence of marginal setae on the uropods (Table 2 below). Note Table 2 compares only female specimens. Red underline = common to *C. sp SD3*

TABLE 2. Comparison of characters of *Cyclaspis* species recorded from the Eastern Pacific. IM= inner margin; OM= outer margin; AP= apical.

Character	<i>C. boquillensis</i>	<i>C. hyalinus</i>	<i>C. bituberculata</i>	<i>C. breedyae</i>	<i>C. conceptionensis</i>	<i>C. dolera</i>	<i>C. giveni</i>	<i>C. nubila</i>	<i>C. peruana</i>	<i>C. testudinum</i>	<i>C. vargasae</i>
Sex	Female	Female	Female	Female	Female	Female	Female	Female	Female	Female	Female
Body length	5.3 mm	2.3 mm	5.2 mm	5 mm	2.1 mm	14 mm	2.6 mm	6 mm	8.5 mm	8 mm	6 mm
Type locality	La Boquilla, Oaxaca	Copalita mouth river, Oaxaca	Bacochibampo Bay, Sonora	Gulf of Nicoya, Costa Rica	Concepcion Bay, Baja California	Salinas Bay, Costa Rica	Todos Santos Bay, Baja California	Corona del Mar, California	Independencia Bay, Peru	Chatam Island, Galapagos	Murcielago Island, Costa Rica
Antenna 1 - main flagellum	Biarticulate	Uniarticulate	Biarticulate	Biarticulate	Biarticulate	----	Biarticulate	----	Biarticulate	Biarticulate	----
Antenna 1 - first basal article inner margins	8 fine hairlike setae	Small row of medial fine hairlike setae and tree setae	2 apical setae	Bare	1 medial seta and 2 apical setae	----	Bare	----	Small row of fine hairlike setae medial-proximally	3 medial setae	----
Carapace-teeth on dorsal surface	3	<u>Absent</u>	<u>Absent</u>	4	<u>Absent</u>	0-1	<u>Absent</u>	<u>Absent</u>	----	<u>Absent</u>	<u>Absent</u>
Maxilliped 3 - inner margin basis	Not serrate	Not serrate	Not serrate	Serrate	Not serrate	----	Not serrate	----	----	----	Serrate
Maxilliped 3 - No. of setae on basis expansion	8IM; 2AP; 7 OM	3IM; 2AP; bare OM	4IM; 2AP; 5OM	3IM; 2AP; bare OM	2IM; 2AP; bare OM	----	3IM; 2AP; a row of fine hairlike setae on OM	----	----	----	12OM; 2AP; bare OM
Maxilliped 3 - Outer margin of the merus expansion	With cuspidate setae	With a row of fine hairlike setae	----	Bare	Bare	----	With a row of fine hairlike setae	----	----	----	With cuspidate setae
Pereopod 1 - basis inner margin	1 medial cuspidate seta and 2 distal cuspidate setae	1 row of setulate setae	3 distal setae	Bare	3 medial-distal setae	----	<u>Bare</u>	----	Bare	3 medial-distal setae	At least 7 cuspidate setae
Endopod of the uropod- peduncle inner margin	28 teeth	<u>Bare</u>	5 cuspidate setae	14 teeth	<u>Bare</u>	18 setae	<u>Bare</u>	<u>Bare</u>	<u>Bare</u>	About 21 teeth	17 teeth
Endopod of the uropod- apical seta	Not fused	Fused	Not fused	Not fused	<u>Not fused</u>	Not fused	<u>Not fused</u>	<u>Not fused</u>	Not fused	Not fused	Not fused
Endopod of the uropod- inner margin	Teeth and seven serrate setae	2 cuspidate setae	7 cuspidate setae	4 cuspidate setae	Serrate	5 cuspidate setae	2 distal cuspidate setae	9 cuspidate setae	10 setae	13 setae	Serrate, with 1 seta

Table from Jarquin-Gonzalez & Garcia-Madrigal, 2013



Jarquin-Gonzalez, J. & M.D.S Garcia-Madrigal. 2013. Annotated checklist and keys for cumaceans (Crustacea: Peracarida) from the Tropical Eastern Pacific, with six new species from the Southern Mexican Pacific . Zootaxa 3721 (3): 201-257