

Key to the Cumacea Families found in the SCB

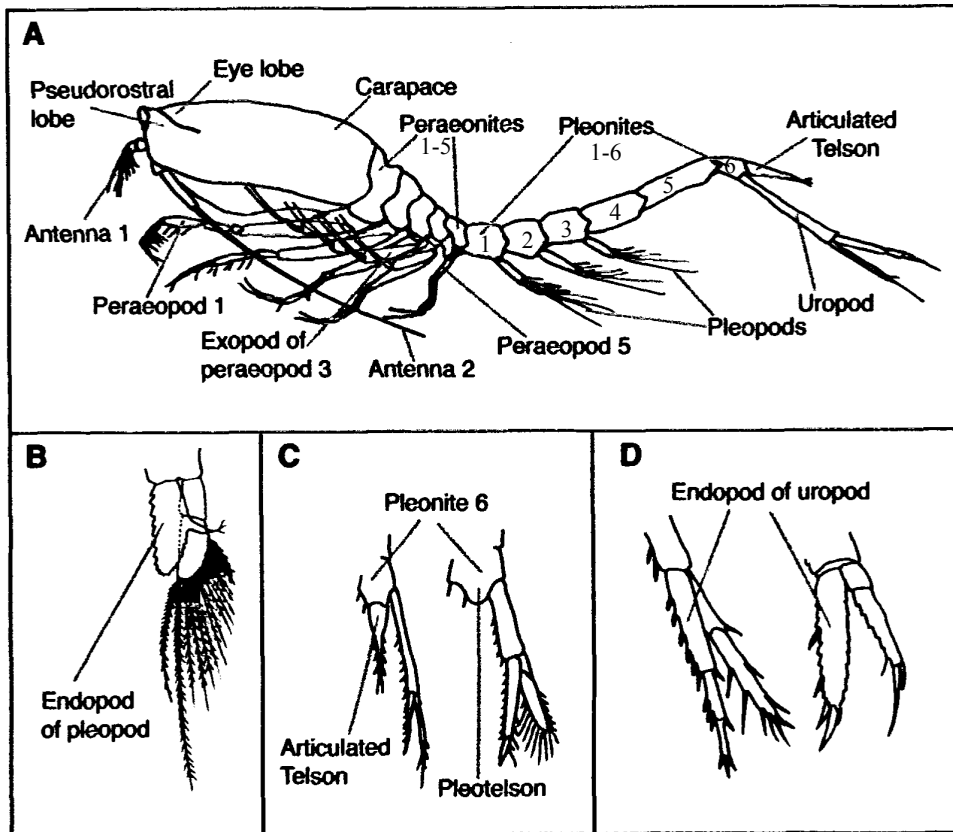


Figure 1 from Haye (2002). **A.** Lateral view of whole body of adult male; **B.** Rami of a pleopod showing presence of process on inner wall of endopod; **C.** Dorsal view of the last abdominal segment (pleonite 6) with uropod (Left = articulated telson, Right = fused telson as pleotelson); **D.** Rami of uropod (Left = tri-articulate endopod, Right = uni-articulate endopod).

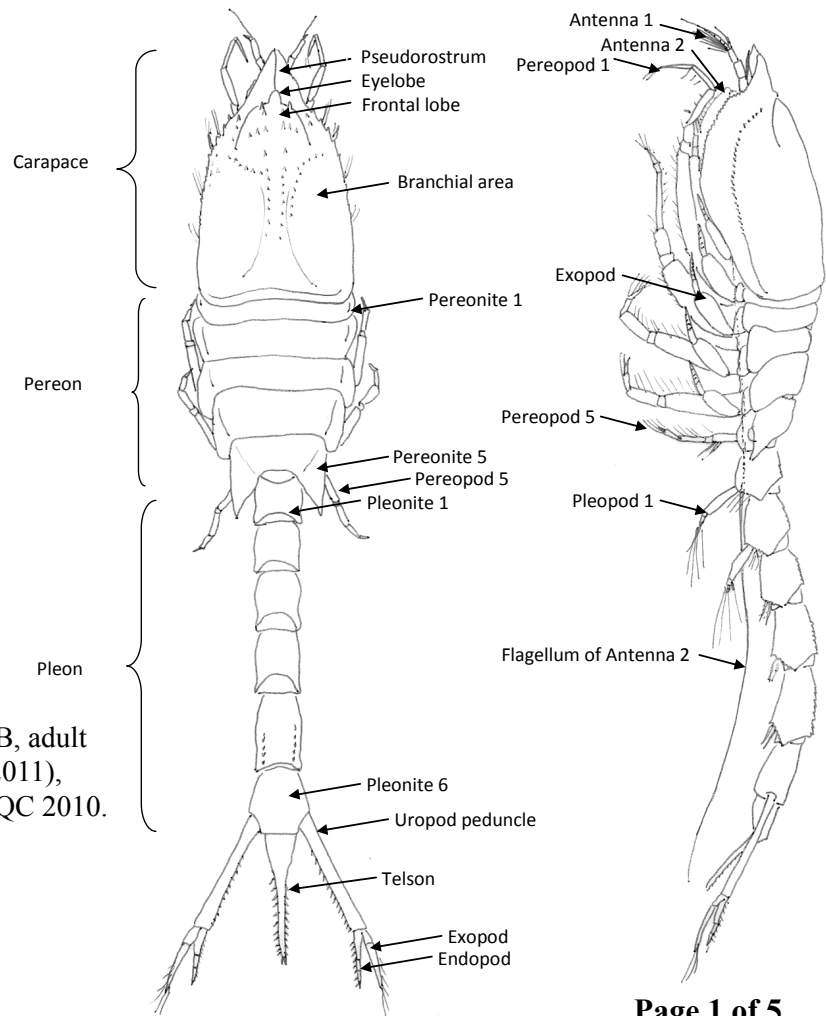
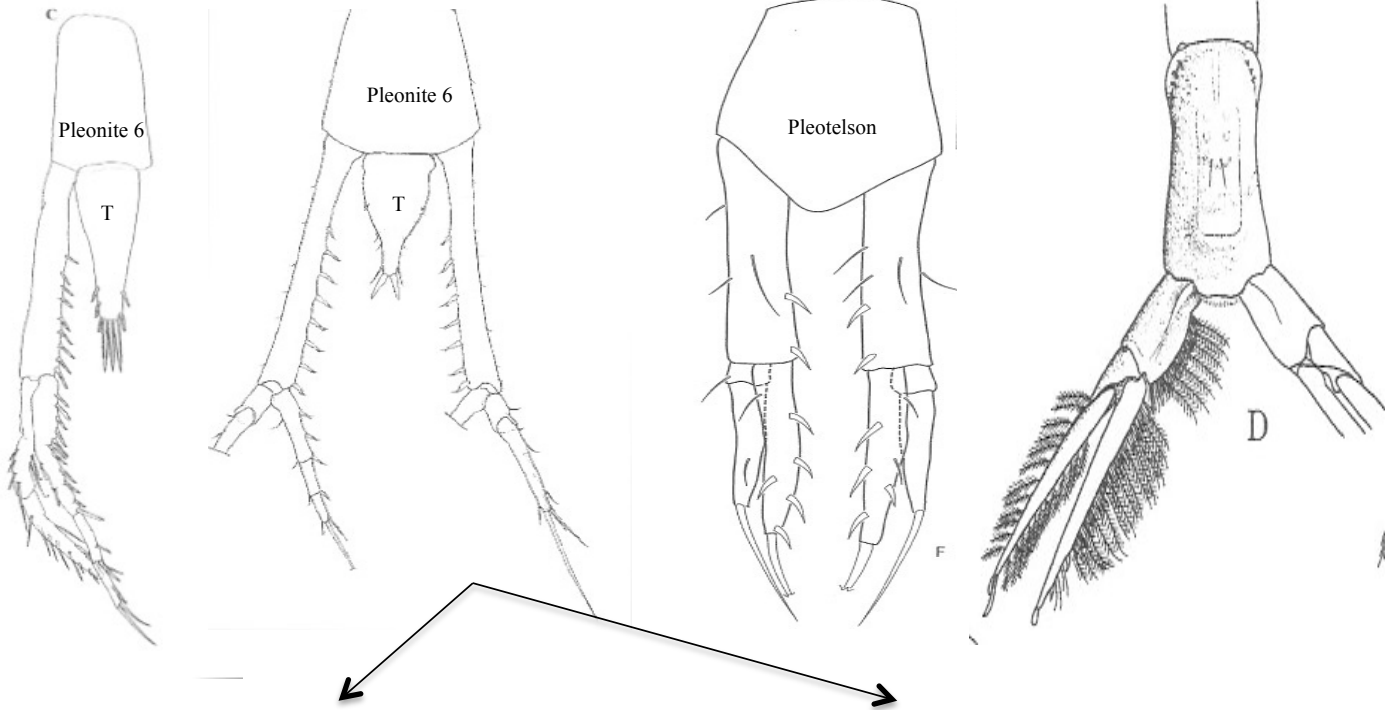


Figure 1 *Diastylis rathkei*: A, female dorsal view; B, adult male lateral view (from Sars, 1900). From Shalla (2011), Identification Guide to British Cumaceans. NMBAQC 2010.

Key to the Cumacea Families found in the SCB

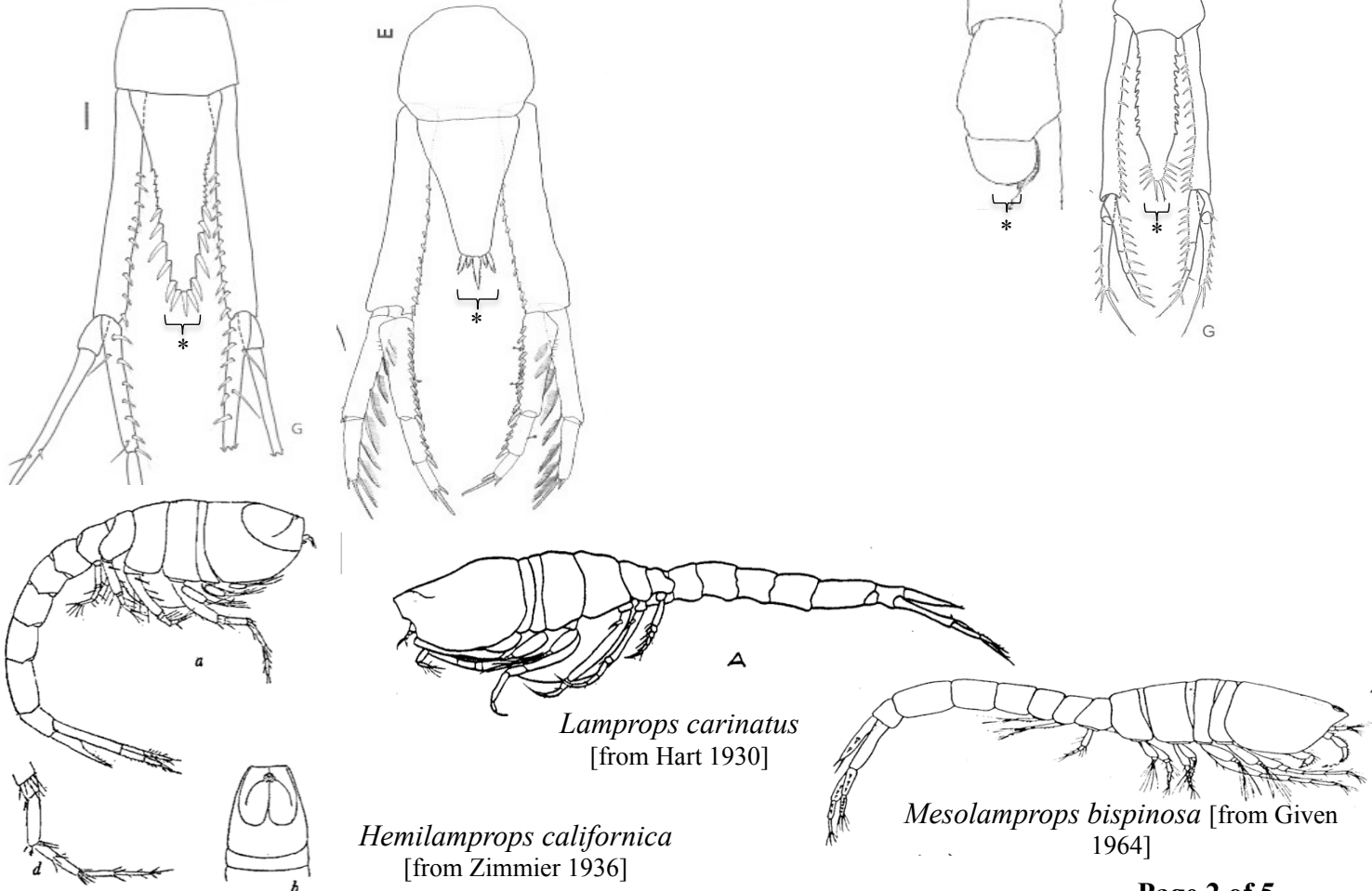
Telson free, articulated, not fused to form pleotelson – **See below**

Telson fused, not articulated, forming pleotelson – **Go to Page 4**



Telson with 3+ terminal, apical setae; uropodal peduncle subequal to telson. **Lampropidae**

Telson with 0-2 terminal, apical setae – **Go to Page 3**



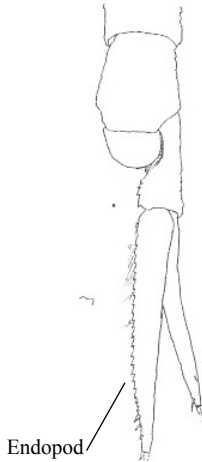
Key to the Cumacea Families found in the SCB

Telson free, articulated, not fused to form pleotelson
& Telson with 0–2 terminal, apical setae

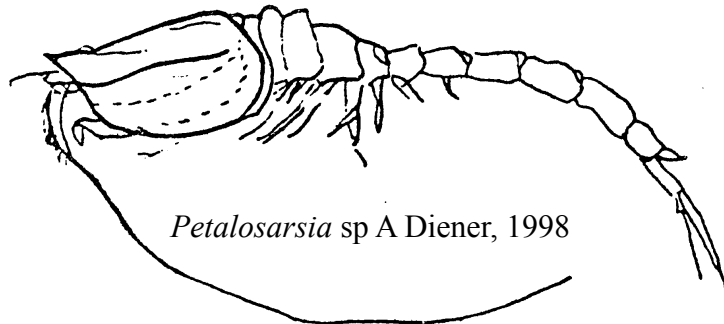


Uropod endopod uniarticulate; male with 5 pairs of pleopods.

Pseudocumatidae



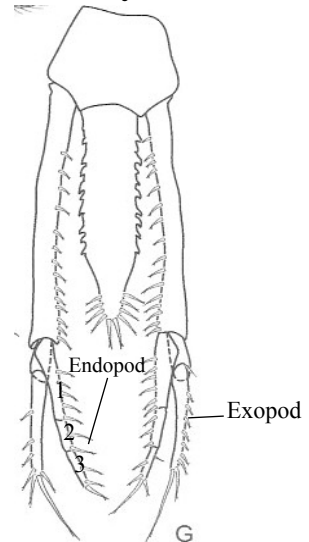
Endopod



Petalosarsia sp A Diener, 1998

Uropod endopod 2–3 articulate; male with 2 pairs of pleopods.

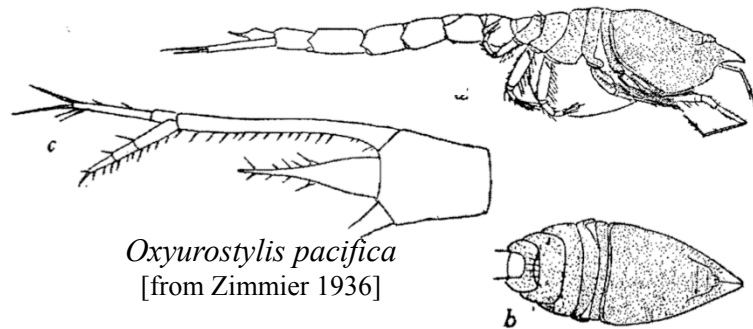
Diastylidae



Endopod

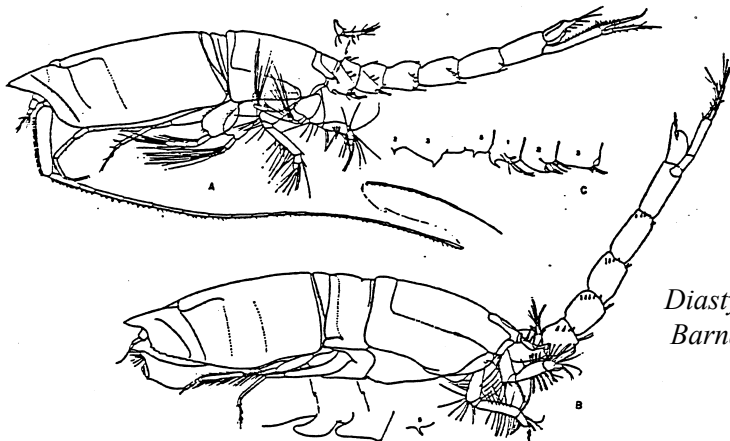
Exopod

G



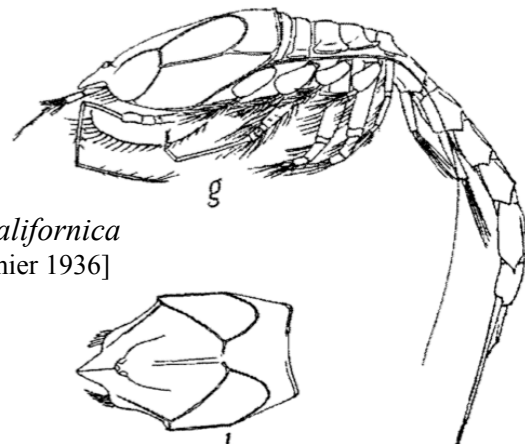
Oxyurostylis pacifica
[from Zimmier 1936]

b



Diastylopsis tenuis [from
Barnard & Given 1961]

Diastylis californica
[from Zimmier 1936]



g

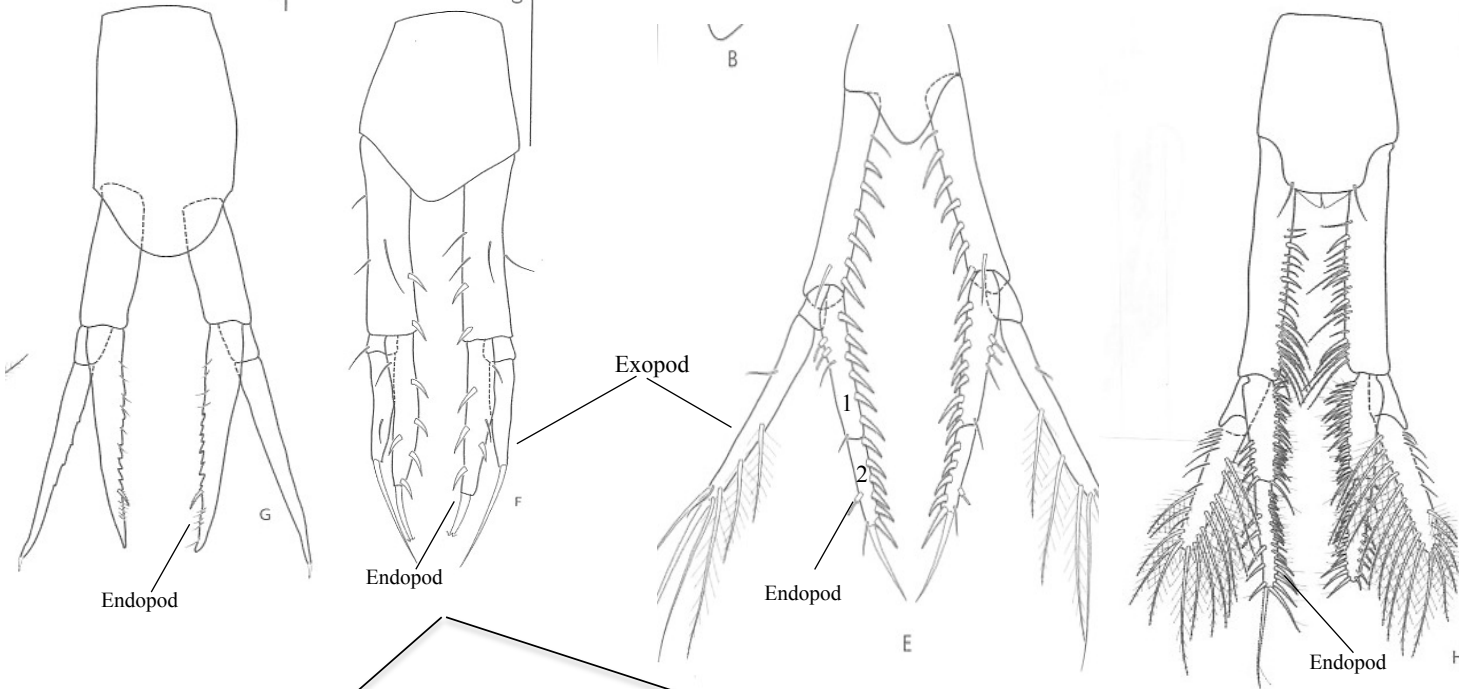
i

Key to the Cumacea Families found in the SCB

Telson fused to form pleotelson

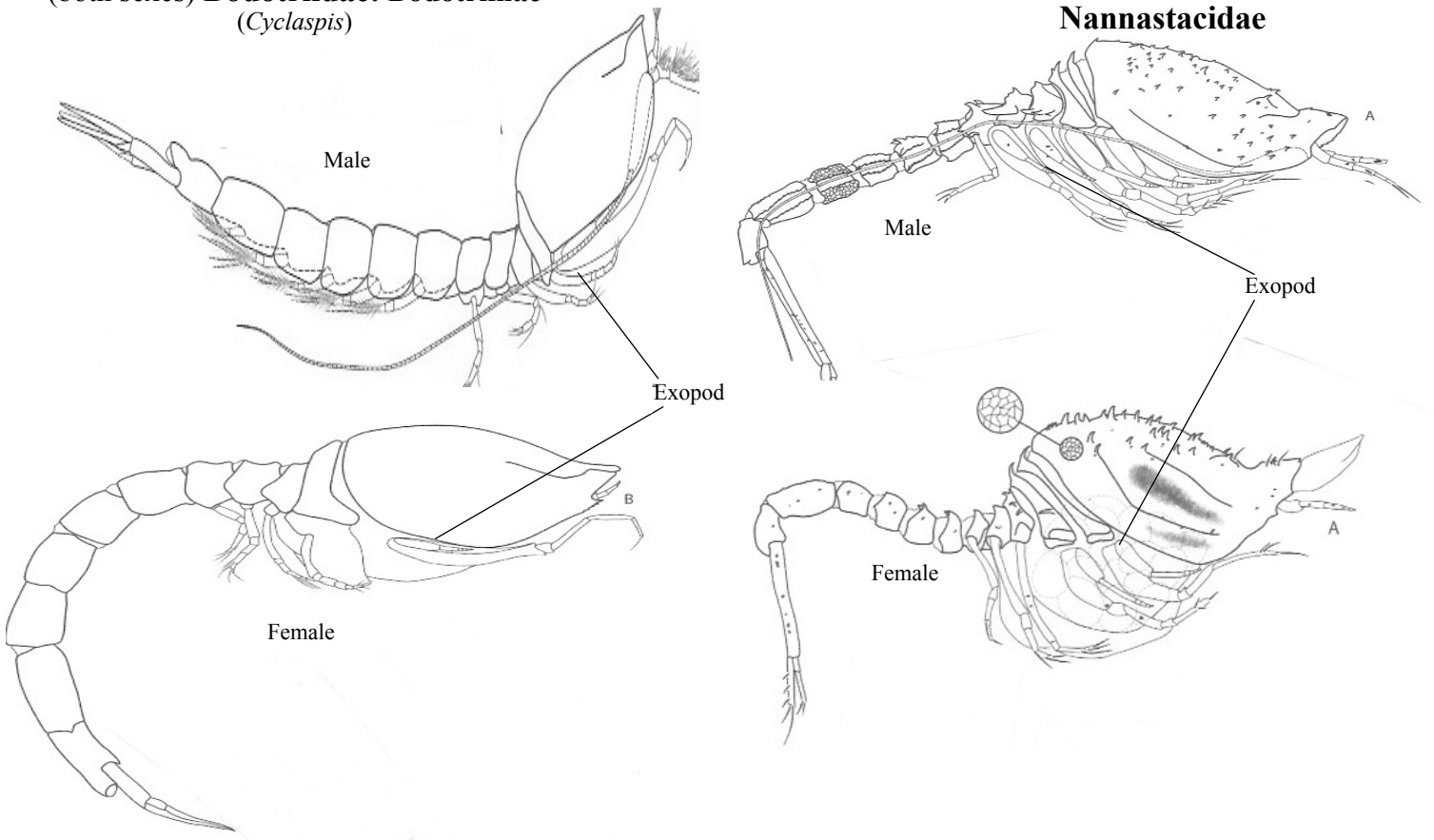
Uropod endopod uniarticulate – See below

Uropod endopod biarticulate – Go to Page 5



No exopods present *beyond* pereopod 1 (both sexes) **Bodotriidae: Bodotriinae** (*Cyclaspis*)

Exopods present on pereopods 1–2 (females) or 1–4 (males) **Nannastacidae**



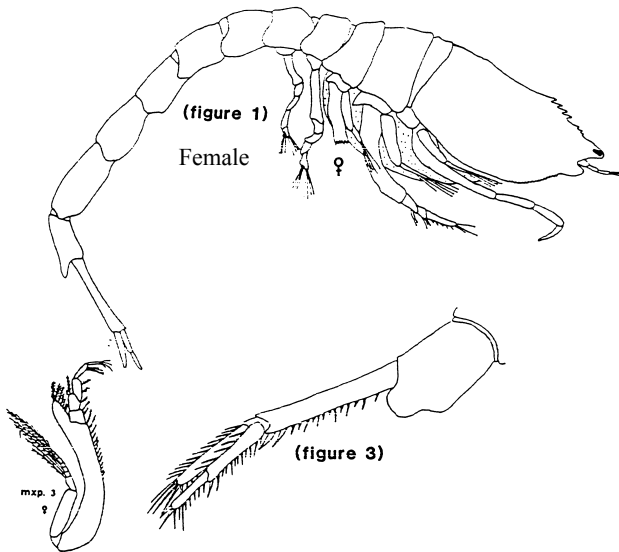
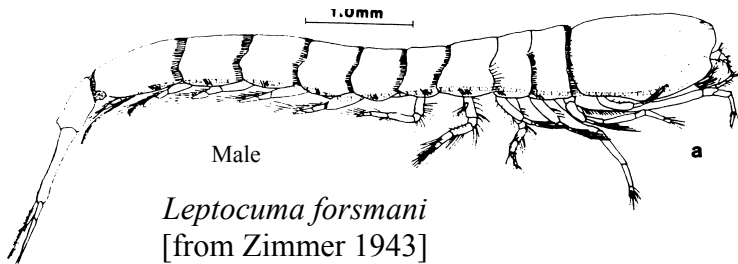
Key to the Cumacea Families found in the SCB

Telson fused to form pleotelson &
Uropod endopod biarticulate

Female with exopods present *beyond* pereopod 1
(e.g., 1-3, 1-4); 5 pairs of pleopods in males

Bodotriidae: Vaunthompsoniiae

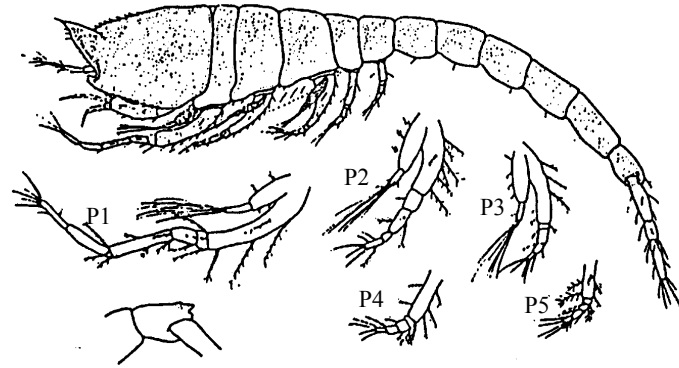
(*Glyphocuma*, *Leptocuma*, *Vaunthompsonia*)



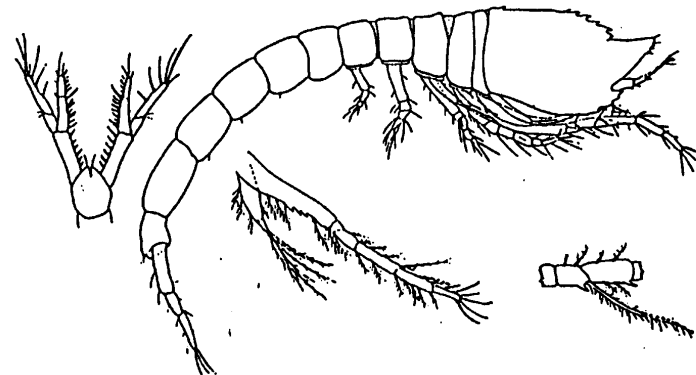
Glyphocuma sp A SCAMIT 1989

Female with exopods on pereopods
1-3; Male with 0-2 pairs of pleopods

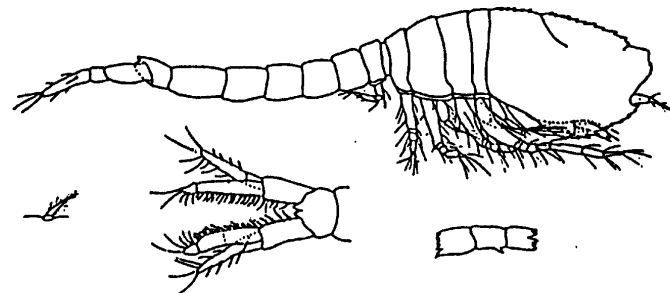
Leuconidae



Leucon subnasica [from Given 1961]



Leucon magnadentata [from Given 1961]



Leucon armatus [from Given 1961]