

SCAMIT CODE: MBC 65

Date Examined: 14 September 1987
Voucher by: Don Cadien

SYNONYMY: None

LITERATURE: Barnard, J. L. 1972. A review of the family Synopiidae (=Tironidae). Mainly distributed in the deep sea (Crustacea: Amphipoda). Smithsonian Contributions to Zoology. Vol. 124, 94 p.

Gurjanova, E. 1951. Amphipoda-Gammaridea of the seas of the USSR and Adjoining waters. Keys to the fauna of the USSR. Zool. Inst. Acad. Sci. USSR. No. 41, 1029 p.

Shoemaker, C. R. 1964. Seven new amphipods from the West Coast of North America with notes on some unusual species. Proc. USNM. Vol. 115, p. 391-430.

Stebbing, T. R. R. 1906. Amphipoda. I. Gammaridea. Das Tierreich. Vol. 21, 806 p.

DIAGNOSTIC CHARACTERS:

1. Article 1 of antenna 1 peduncle with one or more mediodistal recurved prongs, extending approximately 1/2 the length of the second article. Articles 2 and 3 bearing progressively smaller single teeth in similar positions.
2. Epimeron 3 with between 7 and 13 lateral teeth which may be separated into upper and lower groups. Tooth number increases with age. Lateral and dorsal teeth always separated by a smooth area.
3. Pereopod 7, article 2 broadly oval in shape with large teeth which may extend to ventral margin of article in older specimens.

RELATED SPECIES AND CHARACTER DIFFERENCES: (Key in Barnard 1972)

1. *S. crenulata* has more numerous teeth on article 2 of pereopod 7 although the article's shape is similar. Epimeron 3 has more lateral teeth which are continuous with the dorsal group. Anterior margin of head less produced, and head shorter than in sp. A. (See Stebbing 1906 and Gurjanova 1951.)
2. *S. longifrons* has teeth on anterior margin of article 2 of pereopod 7 which are lacking in sp. A. Posterior margin inflated to form a triangle. Anterior margin of head more produced, forming an oblique rather than right-angle where it meets the dorsal margin. (See Shoemaker 1964.)

DEPTH RANGE: 168-206 m.

DISTRIBUTION: From Coronado Submarine Canyon to Pt. Buchon.

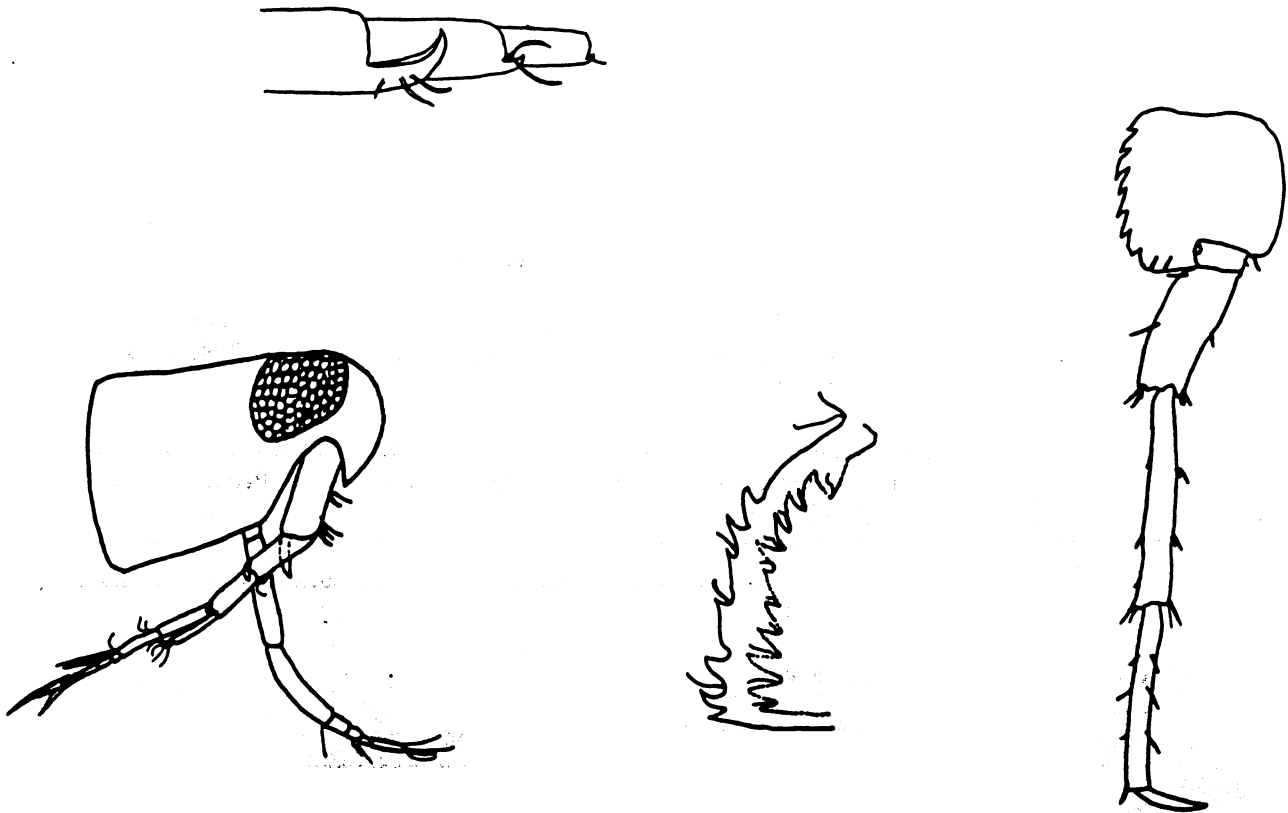


Figure 1. (a) head and antennae, (b) antenna 1 basal articles (medial view of left antenna 1), (c) pereopod 7, (d) third pleonal epimeron with internal molt drawn to show change in tooth number (all from a 4 mm subadult female taken off Pt. Sal).