

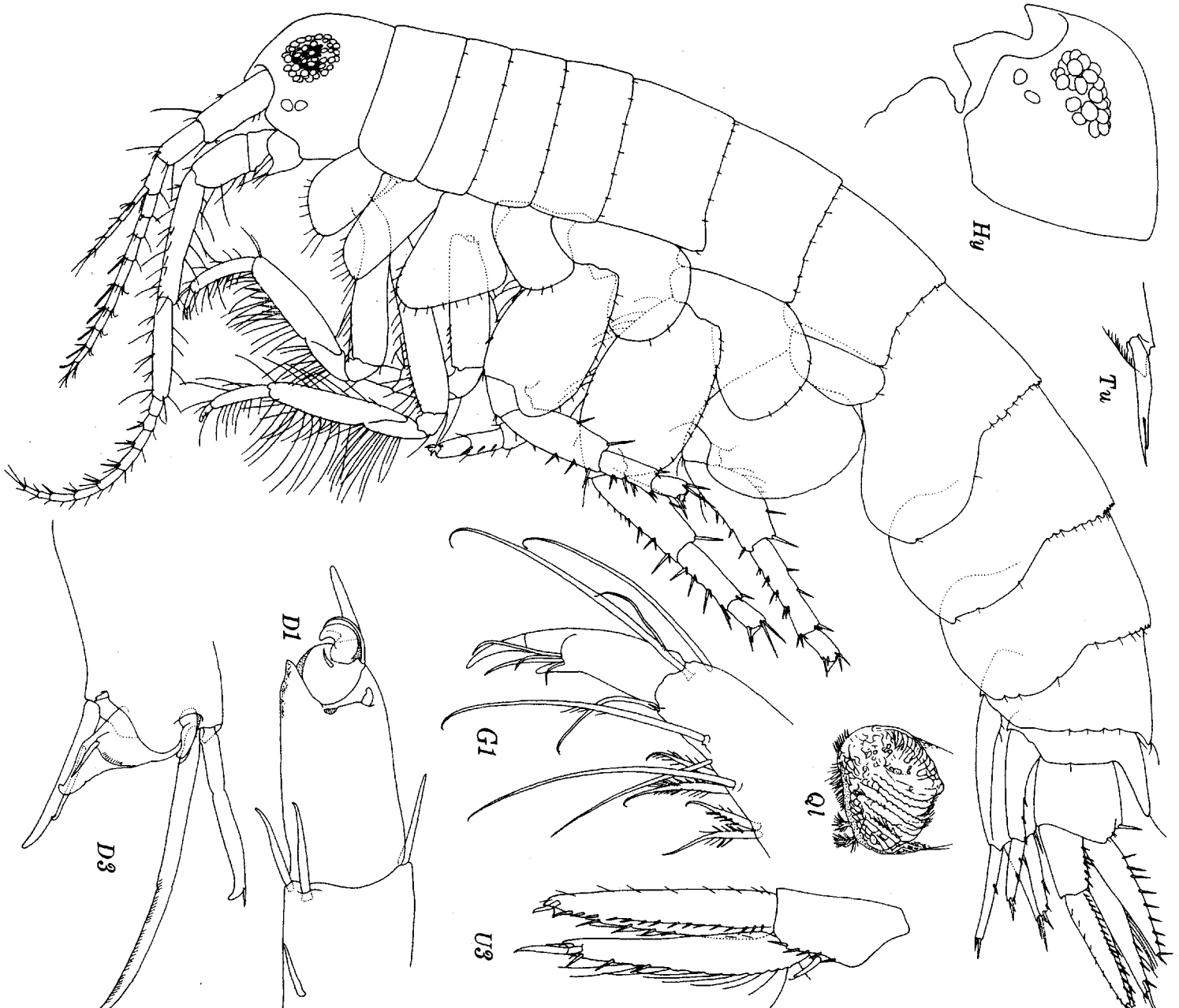
FIGURE 45.—*Tiron tropakis*, new species, holotype, female, 4.9 mm, *Velero* 6688; ♀=male, 4.5 mm, *Velero* 5828; in toto view with pleopeds removed.

## *Metatiron tropakis*

### Diagnostic Characters:

- Eyes present, pair of segregated lateral ommatidia
- Coxae 4 smaller than 3
- Gnathopods simple
- Article 6 of gnathopods elongate
- Dactyls of walking legs short, recurved
- Rostrum with sharp apex
- U1 reaching apex of U2
- Pleons 1-3 hindmargin serrate
- Telson with numerous spines ■

### Illustration:



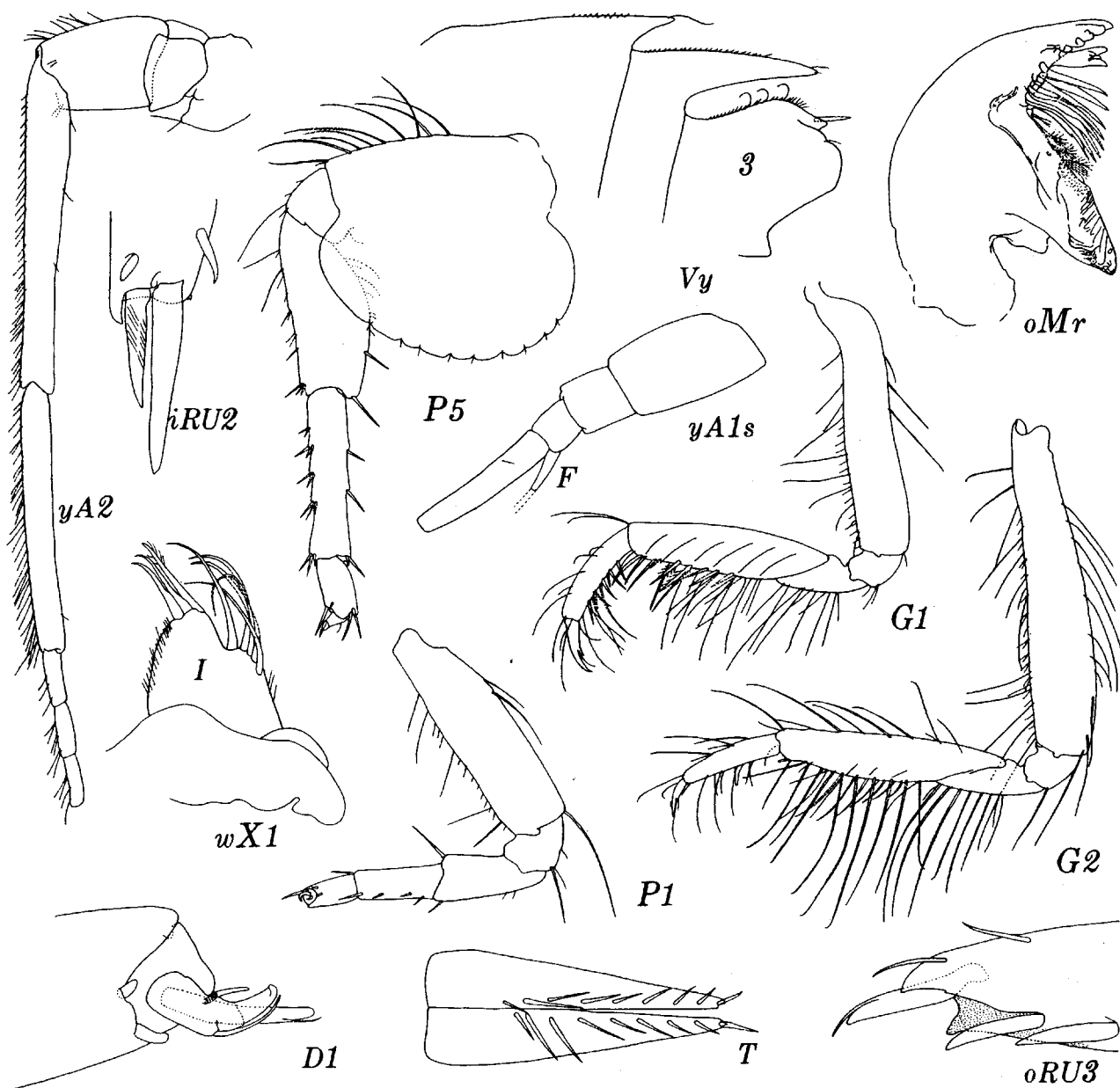


FIGURE 46.—*Tiron tropakis*, new species, holotype, female, 4.9 mm, *Velero* 6688; *y*=male, 4.5 mm, *Velero* 5828; *w*=female, 3.9 mm, *Velero* 5775; *R*=ramus.