

Listriella goleta

Diagnostic Characters:

- Antenna 1, article 2 sub equal to article 1
- P 2-5 typically diffusely pigmented with characteristic thin band of pigment along posterior margins
- E1 posterior margin sinuous, sub-acute distally
- Body pigmentation and eyes present
- Article 5 of gnathopods 1 and 2 weakly produced, thick, blunt, and not produced along posterior margin of article 6
- Outer ramus of uropod 3 bi-articulate

Illustration:

1959

BARNARD: AMPHIPODS

21

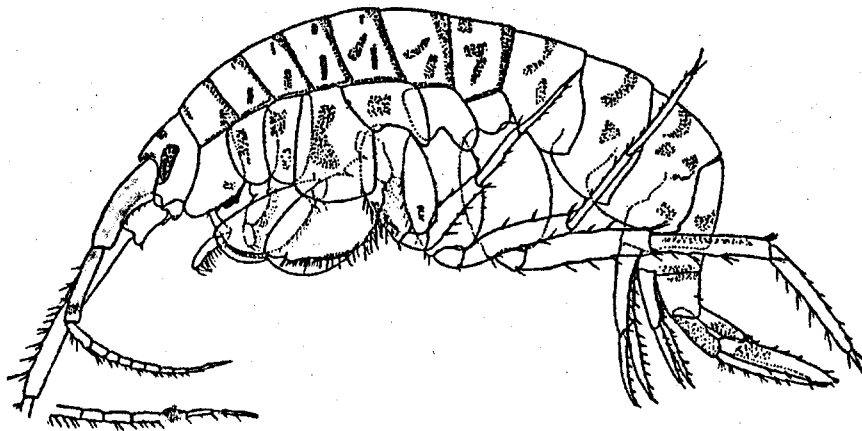


Fig. 6. *Listriella goleta* n. sp. A male specimen 6 mm. long from sta. 5581.

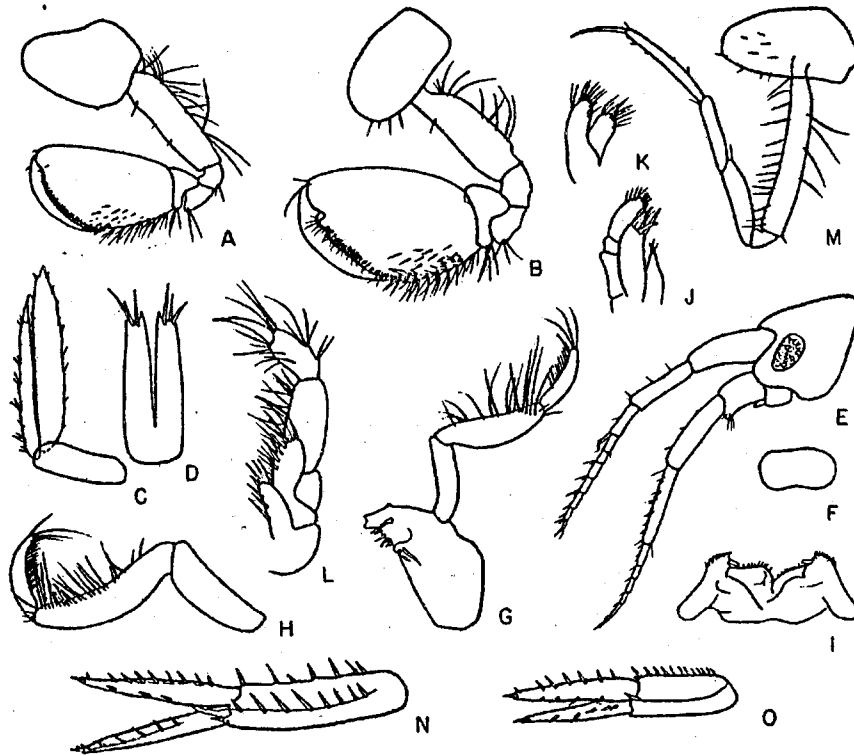


Fig. 7. *Listriella goleta* n. sp. A-D. Male, 6 mm., sta. 5581. A, B. gnathopods 1, 2; C, uropod 3; D, telson. E-O. Female, 4.5 mm., sta. 5404. E, head; F, upper lip; G, H, mandible; I, lower lip; J, K, maxillae 1, 2; L, maxilliped; M, peracopod 1; N, O, uropods 1, 2. female gnathopods nearly identical to those of *L. melanica*