

## *Listriella eriopisa*

### Diagnostic Characters:

- Head with pigment
- E3 rounded, tooth absent
- U3 outer ramus approx. 1/3 of inner ramus, not sub equal
- E3 without notch
- Antennae 1, article 2 without pigment distally
- Body pigmentation and eyes present
- Article 5 of gnathopods 1 and 2 weakly produced, thick, blunt, and not produced along posterior margin of article 6
- Outer ramus of uropod 3 bi-articulate

### Illustration:

1959

BARNARD: AMPHIPODS

23

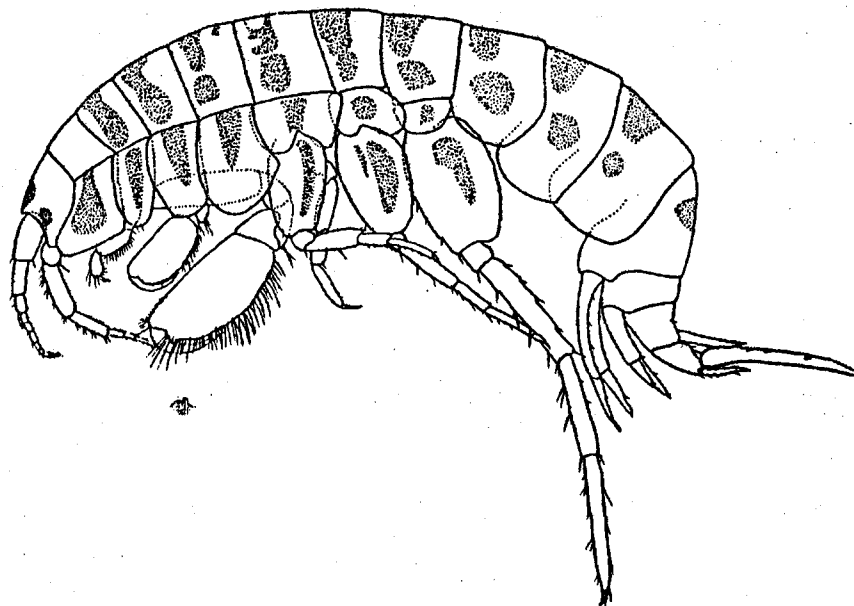


Fig. 8. *Listriella eriopisa* n. sp. A female specimen 5 mm. long from sta. 5579.

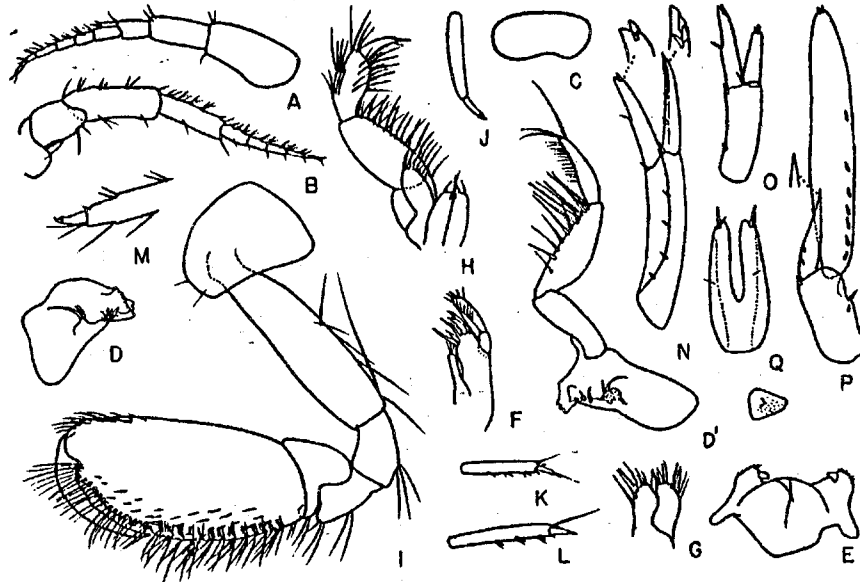


Fig. 9. *Listriella eriopisa* n. sp. A-Q. Female, 5 mm., sta. 5579. A, B, antennae 1, 2; C, upper lip; D, D', mandibles; E, lower lip; F, G, maxillae 1, 2; H, maxilliped; I, gnathopod 2; J, K, L, M, ends of pereopods 2, 3, 4, 5; N, O, P, uropods 1, 2, 3; Q, telson

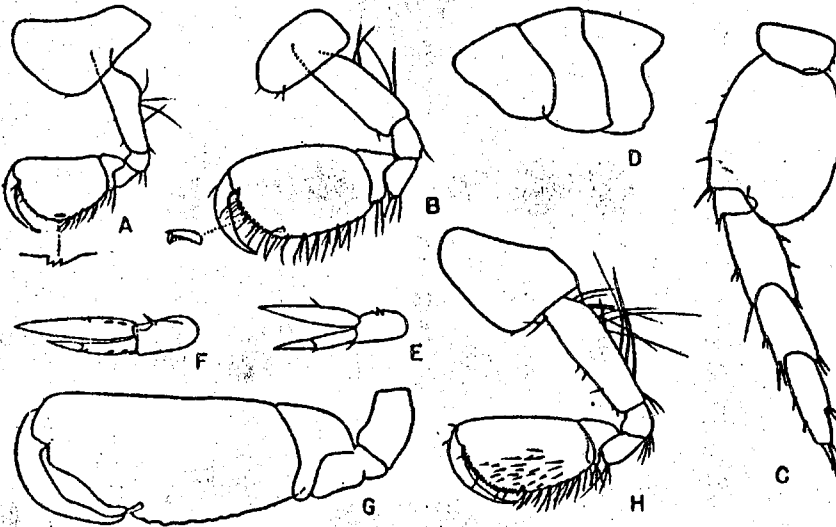


Fig. 10. *Listriella eriopisa* n. sp. A-E. Juvenile, 2.5 mm., sta. 5508. A, B, gnathopods 1, 2; C, pereopod 5; D, pleon segments 1-3; E, uropod 3. F. Juvenile, 4 mm., sta. 5736, uropod 3. G. Male, 6 mm., sta. 5579, gnathopod 2. H. Female, 5 mm., sta. 5579, gnathopod 1.