

## *Liljeborgia cota*

### Diagnostic Characters:

- Eyes absent
- Lateral head lobe strongly produced
- Epimeron 1 with one small spine or none
- Telson cleft only  $\frac{1}{4}$  to  $\frac{1}{3}$  and lacking terminal spines on telsonic lobes
- Basis of P5 – P7 more than twice as long as wide
- Article 5 of G1 and G2 strongly produced, slender and elongate
- Outer ramus of uropod 3 simple (uni-articulate)

### Illustration:

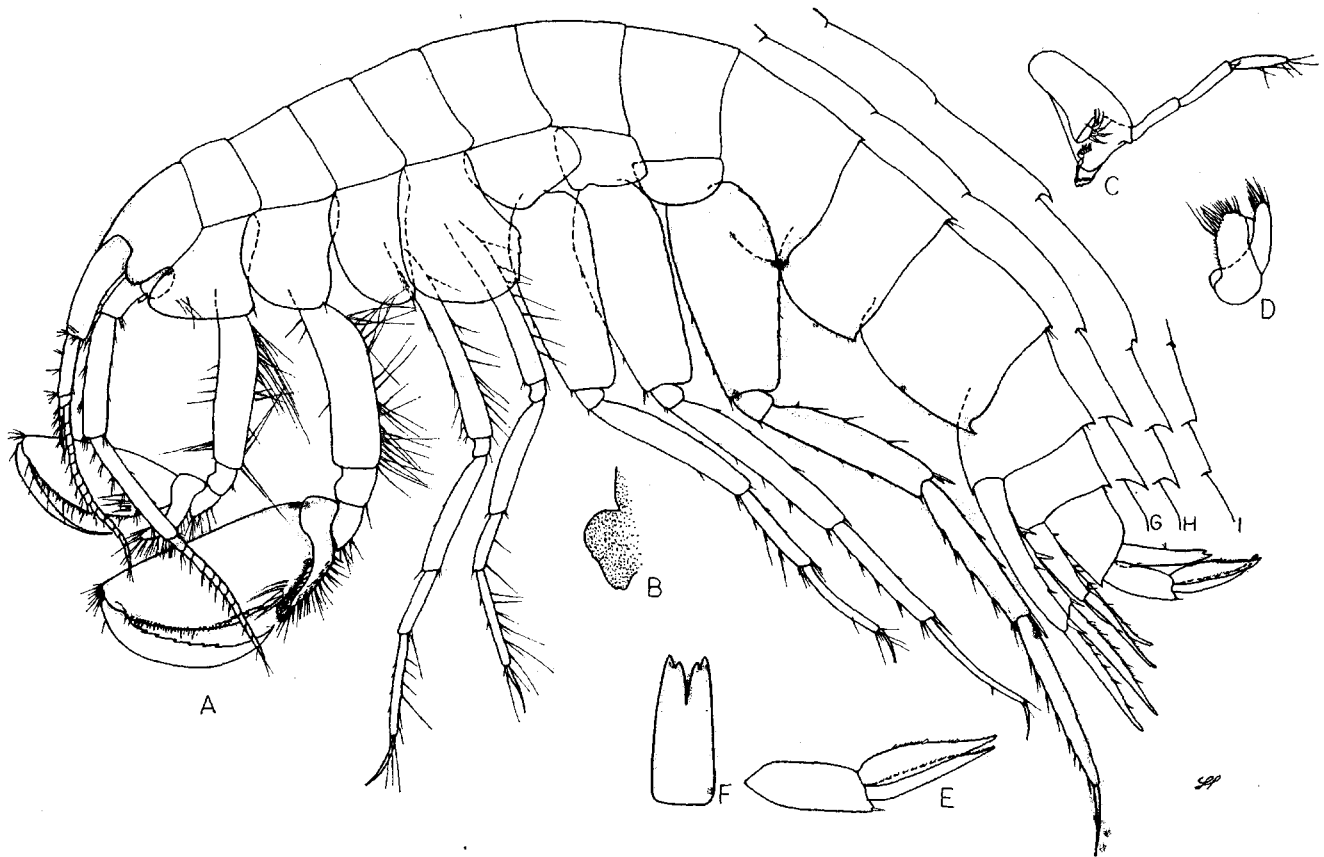


Fig. 8. *Liljeborgia cota*, n. sp. Female, holotype, sta. 6338: A, lateral view; B, upper lip and epistome, lateral view; C, mandible; D, maxilla 2; E, uropod 3; F, telson. Additional pleonal configurations: G, male, sta. 6348; H, female, 6347; I, male, sta. 6347.

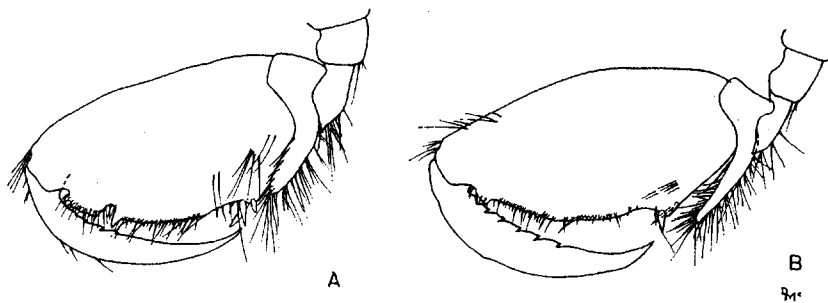


Fig. 9. *Liljeborgia cota*, n. sp. Second gnathopods: A, male, sta. 6351; B, male, sta. 6347.