

Stenothoe frecanda

Diagnostic Characters:

- Telson lacking dorsal setae or setules
- G1 carpus shorter than or subequal to merus
- Pereopod 6, basis with small or large posterior lobe, lobe present
- Telson armed with spines and/or setae dorsally
- Antennae 1, article 1 not produced
- Pereonite 4 not swollen dorsally
- Eyes present; pigmented, composed of multiple ommatidia

Illustration:

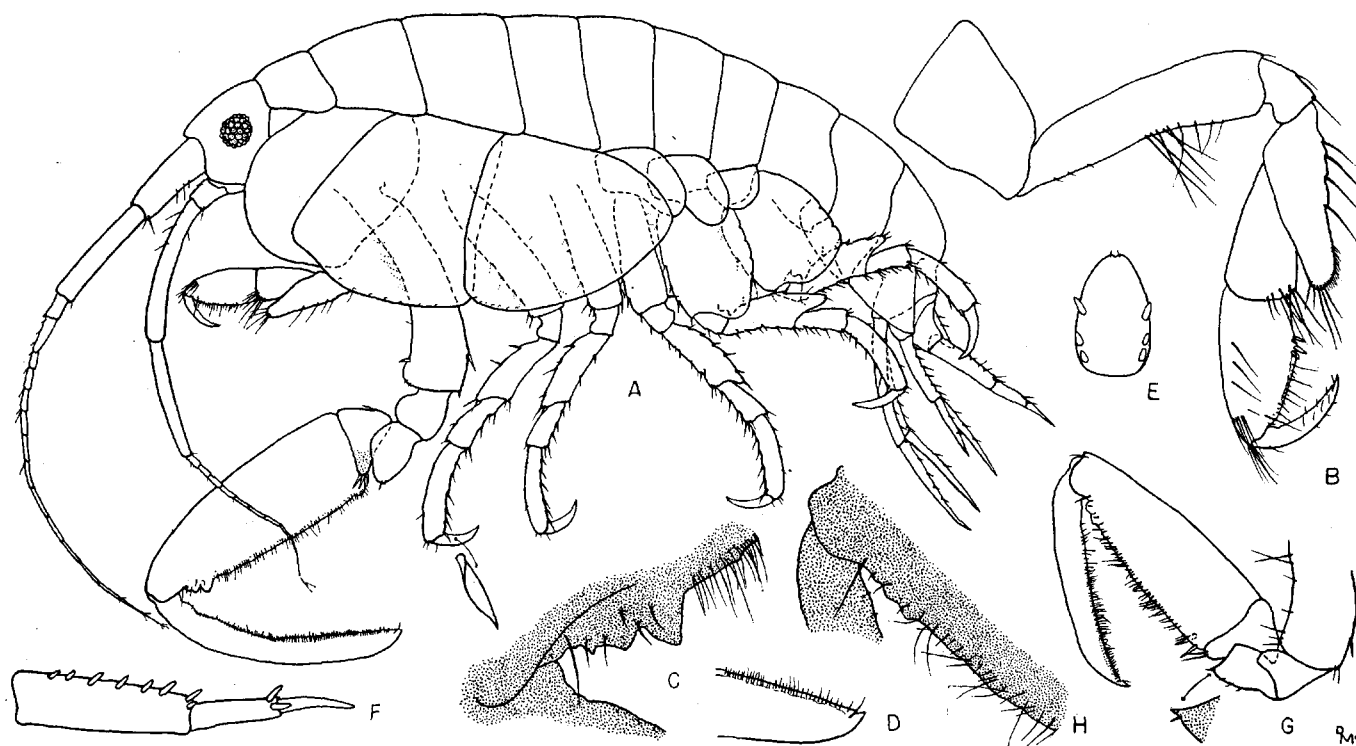


Fig. 18. *Stenothoe frecanda*, n. sp. Male, 4.0 mm, sta. 6001: A, lateral view; B, gnathopod 1; C, palmar teeth of gnathopod 2; D, apex of article 7 of gnathopod 2; E, telson; F, uropod 3. Female, 4.0 mm, sta. 4935: G, gnathopod 2; H, palmar teeth of gnathopod 2.