

# *Metopa dawsoni*

## Diagnostic Characters:

- G1 carpus much longer than merus
- Telson with three or four pairs of dorsal spines
- Pereopod 6 basis with small or large posterior lobe, but lobe present
- Antenna 1, article 1, not produced
- Pereonite 4 not swollen dorsally
- Eyes present; pigmented, composed of multiple ommatidia

## Illustration:

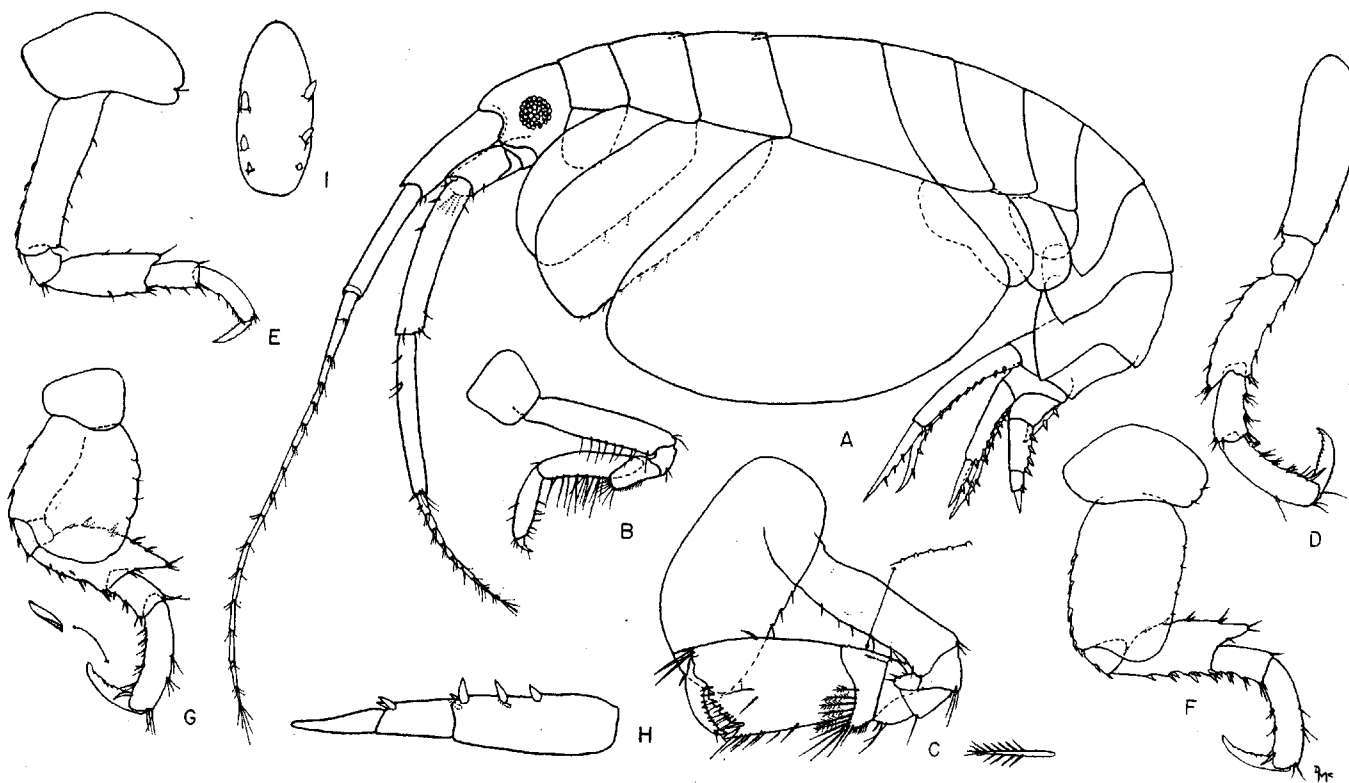


Fig. 10. *Metopa dawsoni*, n. sp. Female, 3.8 mm, sta. 5828: A, lateral view; B,C, gnathopods 1, 2; D,E,F,G, pereopods 2, 3, 4, 5; H, uropod 3; I, telson.

in the male, the finger nearly reaching end of palm, its article 3 more strongly produced than in male.

HOLOTYPE: AHF No. 598, male, 3.0 mm.

TYPE LOCALITY: Station 6098, off Pt. Fermin, 33-38-45 N, 118-14-45 W, 24 fms, February 19, 1959.

MATERIAL: 36 specimens from 12 stations.

RELATIONSHIP: The genus *Metopa* is large, with 46 species. A key to

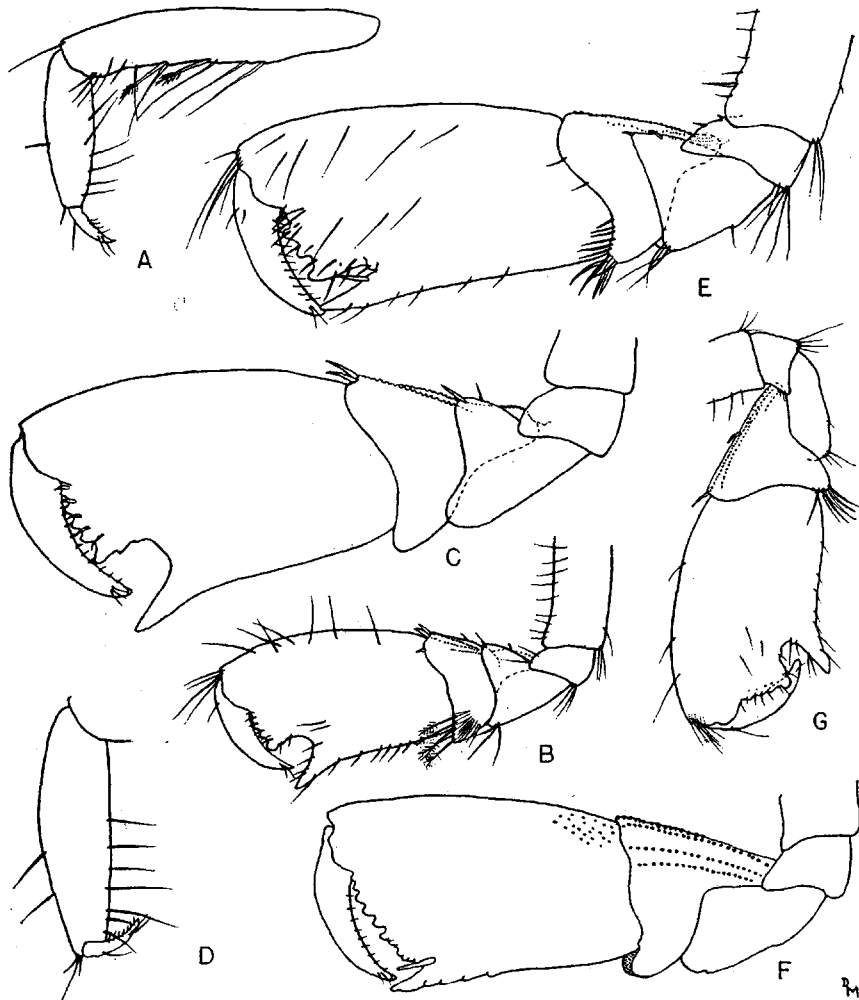


Fig. 11. *Metopa dawsoni*, n. sp. Male, 4.3 mm, sta. 6105: A,B,C, gnathopods 1, 2, 2. Female, 3.8 mm, sta. 5828: D,F, gnathopods 1, 2. Female, 5.0 mm, sta. 6132: E, gnathopod 2. Male, holotype, 3.0 mm, sta. 6098: G, gnathopod 2.