

Gracilipleustes monocuspis

Diagnostic Characters:

- Gnathopods often strongly subchelate, rarely subequal (2 larger, often of different form)
- Carpus of G2 not elongate, deep
- Palm of propod (G2) with median tooth
- Apex of telson entire
- Coxal gill possibly present on P7
- Dactyl slender, non-pectinate or weak or lacking
- Pleon plate 3 often rounded and or serrated
- Telson keeled centrally, often cleft or notched apically
- **Rostrum small, shorter than width of eye**
- **Pleon plate 2 with dorsal posterior tooth**

Illustration:

1960

BARNARD: PLEUSTID AMPHIPODS

47

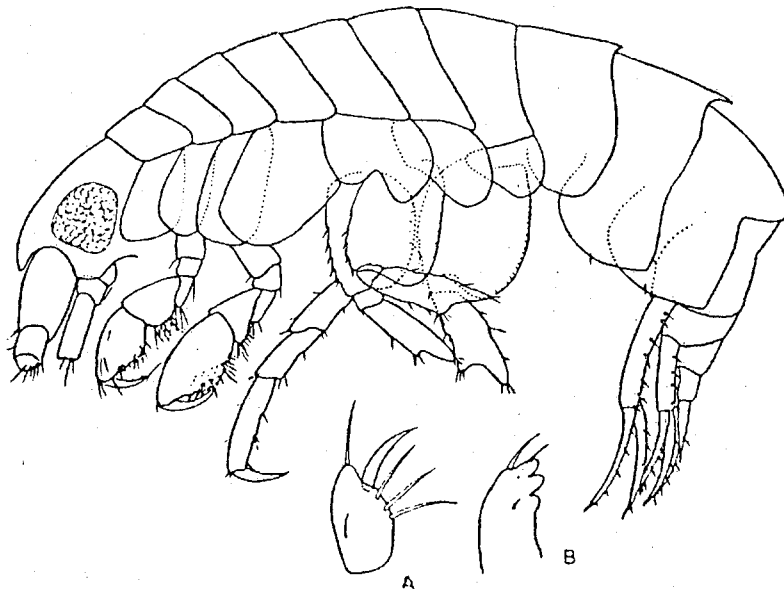


Fig. 6. *Stenopleustes monocuspis* Barnard & Given, n. sp. Sex?, 2.5 mm, sta. 5828
A, articles 3 and 4 of maxillipedal palp; B, outer plate of maxilliped.

Stenopleustes monocuspis Barnard & Given, new species
(Fig. 6)