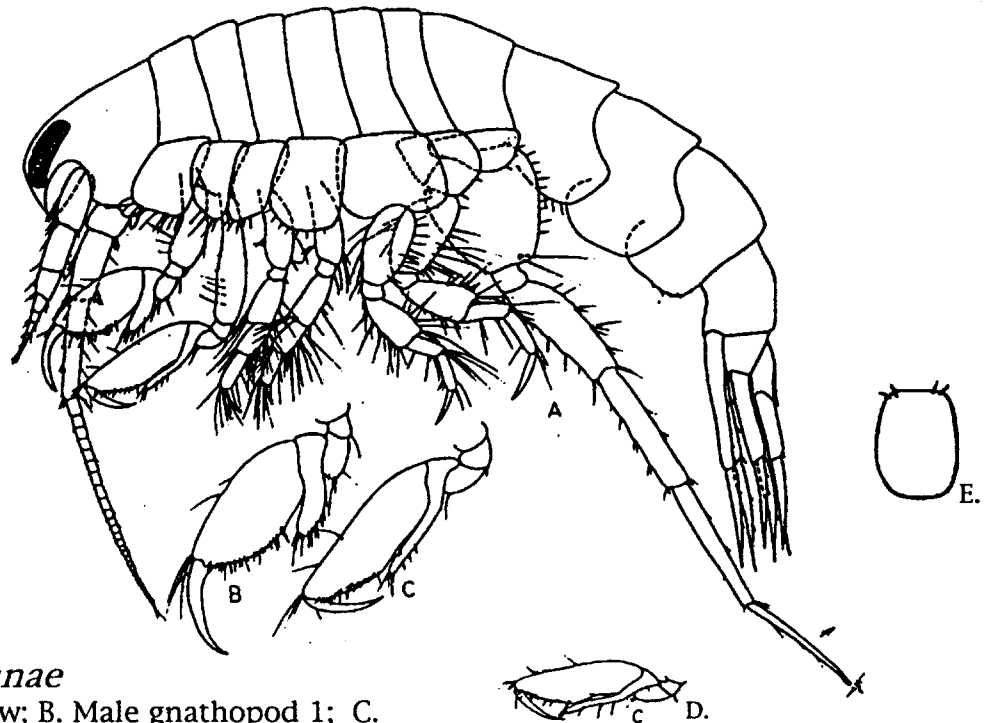


Species: *Monoculodes* sp SD1

Taxon: Gammaridea: Oedicerotidae

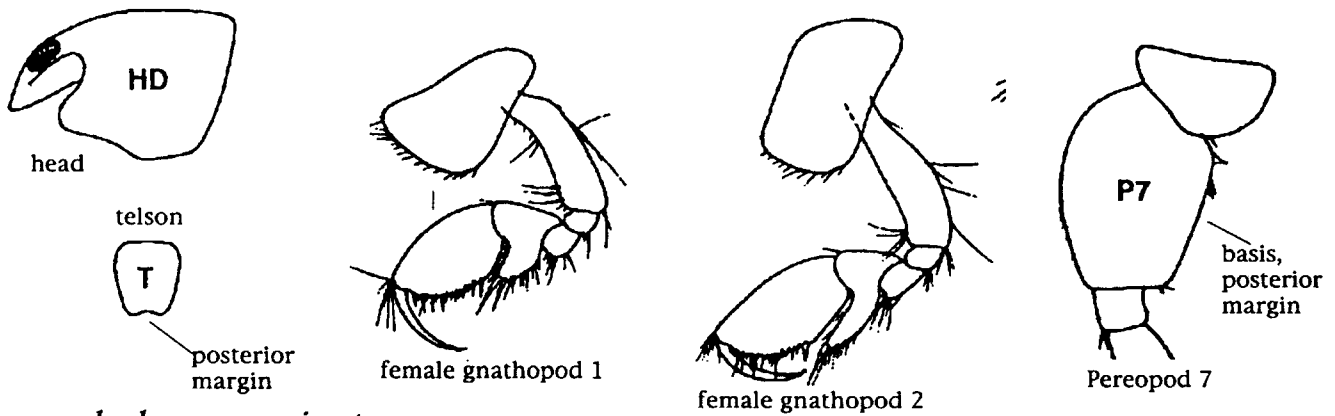
Date: 15 May 1997

Additional Illustrations: From J.L. Barnard, 1962.



*Monoculodes hartmanae*

A. entire male, lateral view; B. Male gnathopod 1; C. Male gnathopod 2; D. Female gnathopod 2; E. telson.



*Monoculodes emarginatus*

Distribution—

Pt. Loma: 100 - 320 ft; Imperial Beach to La Jolla, California

Geographic:

Habitat: