

SCAMIT Code: MBC22

Date examined: October 15, 1984

Voucher By: Ann Martin

Synonymy: Monoculodes sp. A (sensu Martin)

Literature:

Sars, G.O. 1895. Amphipoda. IN: An account of the crustacea of Norway with short descriptions and figures of all the species. Christiania and Copenhagen. 1:i-viii, 1-711.

Diagnostic characters:

1. Rostrum acutely pointed, as long as rest of head (Fig. 1).
2. Pigment frequently present, pattern similar to Westwoodilla caecula.
3. Lobe on article 5 of gnathopod is as broad as article 6 is wide (Fig. 2.).
4. Telson convex, but may be slightly emarginate.

Related species and character differences:

Monoculodes norvegicus is similar in appearance to Westwoodilla caecula because of the pigmentation, size, and head shape; M. norvegicus is distinguished by the characteristic gnathopods (Fig. and 3).

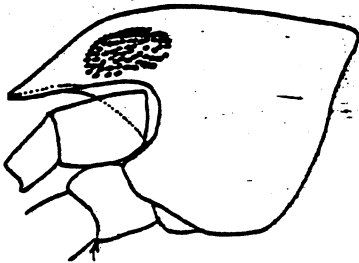


Fig. 1. Head of M. norvegicus.

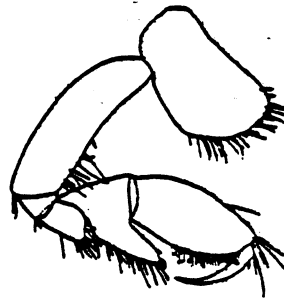


Fig. 2. Gnathopod 1.

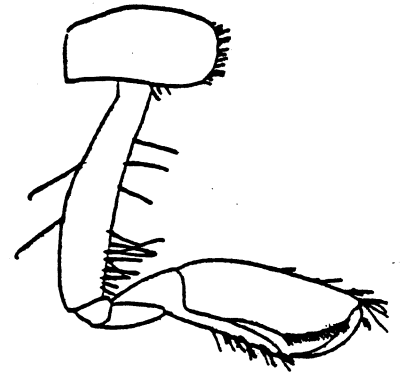


Fig. 3. Gnathopod 2.

Depth range: 45m - 600m.

Distribution:
Cosmopolitan.

