



## City and County of San Francisco Voucher Sheet

Voucher #: AM754

Taxa: Amphipoda: Oedicerotidae

Original Prep.Date: 06Jun 2006

Prepared By: D. Norris

Species Code: AMERICHELID\_SD1

Species: *Americhelidium* sp. SD1

Authority:

Common Synonyms: *Americhelidium* Type A  
of SCAMIT

*Synchelidium rectipalmum* of CCSF

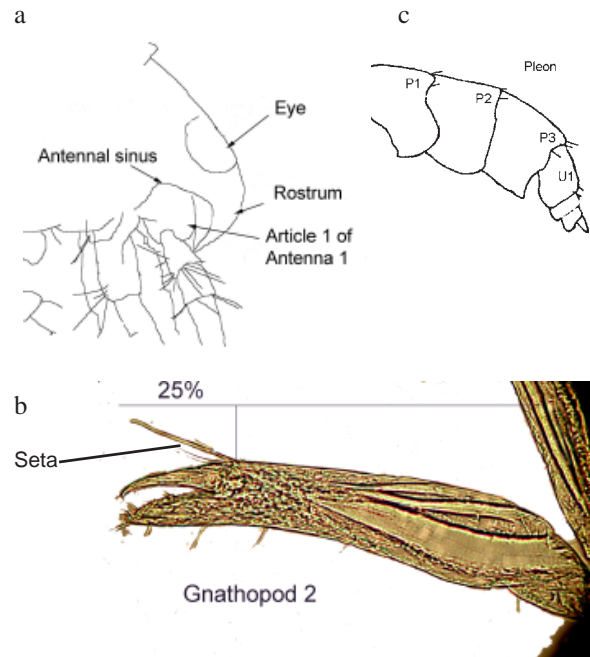
### Characters:

- Eyes fused dorsally but not extending onto the rostrum (a)
- Rostrum long, downturned at 90 degrees, tip of the rostrum extending beyond article 1 of antenna 1, antennal sinus deep and rectangular (a)
- Palm of gnathopod 1 oblique
- Dactyl of gnathopod 2 about 25% of the length of propodus; gnathopod 2 sparsely setose ventrally and dorsally, but with a long seta at the base of the dactyl (b)
- Pereopod 7, article 2 without long setae
- Pleonites 1-3 and urosomite 1 with paired, dorso-lateral setae (often broken off or hard to see) (c)

### Additional Information:

First recognized in San Diego, a common species in our SWOO samples

### Illustrations:



a and b drawing and photo of specimen in vial 2 by D. Norris  
c Pasko, 2004

### Similar Species:

*Americhelidium shoemakeri*: has a shorter rostrum (does not extend past the 1st article of the 1st antenna); gnathopod 2 is thinner and more setose and without a long seta at the base of the dactyl; head has a crescent-shaped antennal sinus; no setae on the pleonites or urosomites.

*Americhelidium rectipalmum*: differs in the setal pattern of pereopod 7 (long setae on posterior margin of article 2), has a much shallower antennal sinus, and a transverse palm on gnathopod 1. No true *A. rectipalmum* have been found in any of the SWOO or San Francisco Bay samples. Mills (1962) states *A. rectipalmum* and *A. shoemakeri* ranges overlap but *A. rectipalmum* prefers deeper water habitats.

**Americhelidium sp. SD1** (continued)

**Comments:**

This species has been found in depths of about 50 m. in Southern California (Pasko, 2004).

**References:**

Mills E. L. 1962. Amphipod crustaceans of the Pacific Coast of Canada. *Natural History Papers- National Museum of Canada* 15:21.

Pasko, D. 2004. Provisional Voucher Sheet for *Americhelidium* sp. SD1. City of San Diego.

**Voucher Specimens**

Vial Number	Sample Number	Station	Sample Date	Number of Specimens	Comments
1	0409166842	43	17 Sep 2004	2	DJN, good condition 0.5 mm sieve size
2	0409166842	43	17 Sep 2004	6	CB, good condition, 1 mm sieve size
3	SWOOA120	49	23 Sep 1999	8	MGK, good, 2 dyed blue, originally labeled as <i>Synchelidium rectipalmum</i> (corrected)
4	SWOOA025	49	18 Sep 1997	5	MGK/BPS, good condition originally labeled <i>Synchelidium rectipalmum</i> (corrected)

**Revision History:**