

Melita sulca

Diagnostic Characters:

Peraeon generally smooth

Abdomen often mid-dorsally toothed or mucronate, rarely spinose or setose or laterally toothed

Head, anterior lobe rounded, inferior antennal sinus reduced, often notch-like

Eye generally small, rounded, pigmented

Antenna 2 shorter than antenna 1

G1 and G2 in males, markedly unequal, G2 propod and dactyl large, carpus short

E3 produced

Urosomal segment 1 with one mediodorsal tooth

Urosomal segment 2 with one pair of small dorsolateral teeth on each side, each pair enclosing one seta

G2, male, palm expanded and setose, palm lacking teeth

Eyes dark

Illustration:

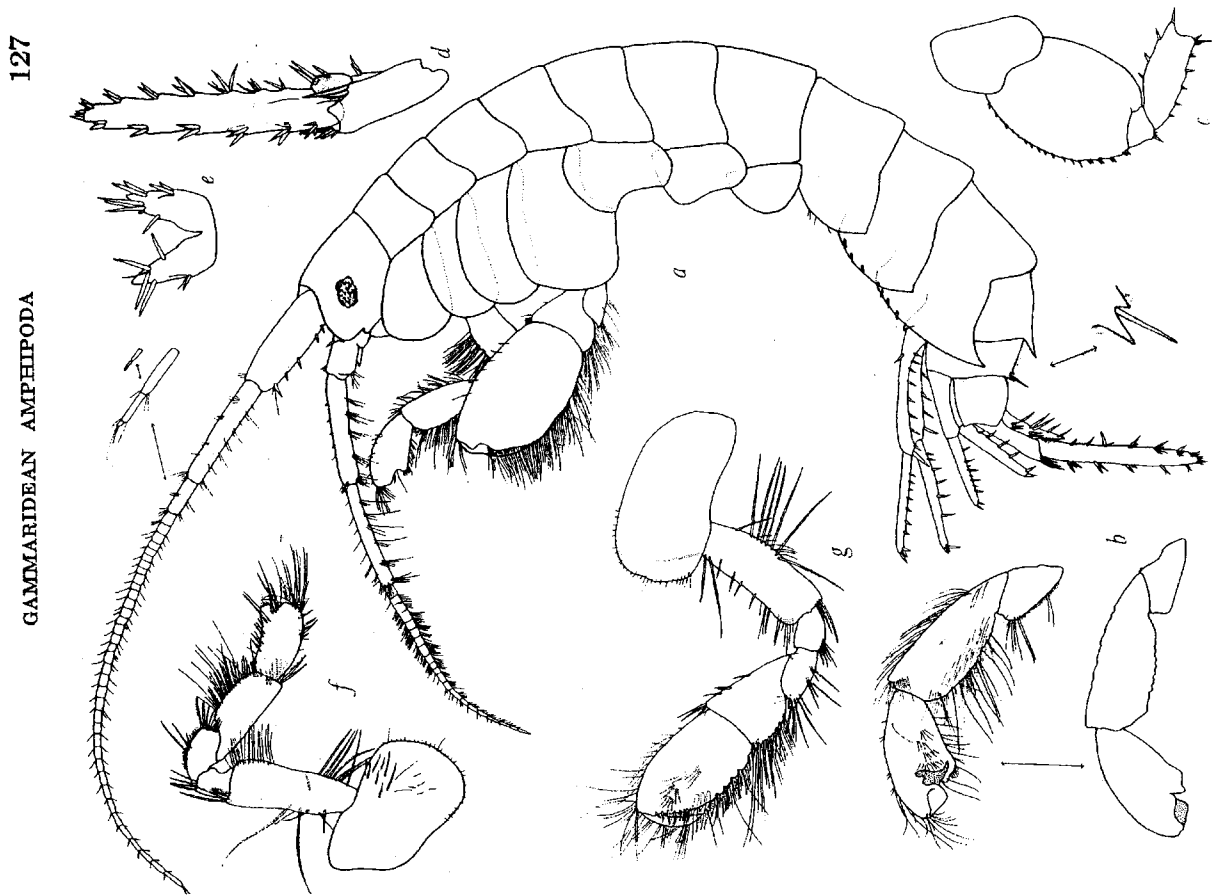


FIGURE 22.—*Melita sulca* (Stout), male, 12.0 mm., La Jolla, California, coll. Dr. T. E. Bowman: *a*, lateral view with offset of accessory flagellum (normal and enlarged); *b*, gnathopod 1, medial view with setae, lateral view without setae; *c*, pereopod 3; *d*, uropod 3; *e*, telson. Female, 9.0 mm.: *f, g*, gnathopods 1, 2.

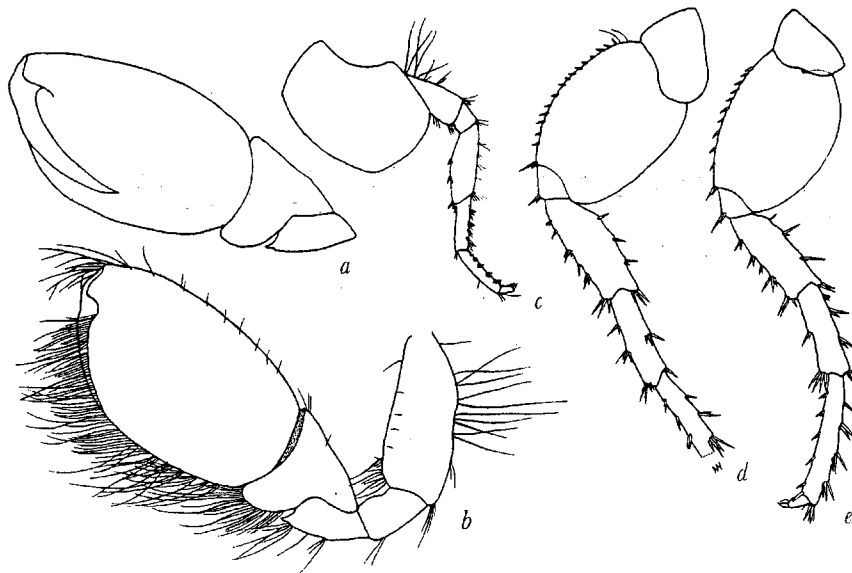


FIGURE 23.—*Melita sulca* (Stout), male, 12.0 mm., La Jolla, California, coll. Dr. T. E. Bowman: *a,b*, gnathopod 1, medial and lateral views; *c,d,e*, pereopods 2, 4, 5.