

Dulichella appendiculata

Diagnostic Characters:

Peraeon generally smooth

Abdomen often mid-dorsally toothed or mucronate, rarely spinose or setose or laterally toothed

Head, anterior lobe rounded, inferior antennal sinus reduced, often notch-like

Eye generally small, rounded, pigmented

Antenna 2 shorter than antenna 1

G1 and G2 in males, markedly unequal, G2 propod and dactyl large, carpus short

E3 produced

Gnathopod 2, male, propod and dactyl grossly enlarged

Uropod 3, outer ramus slender, sublinear, rod-like

Pleon segments 1-3, usually postero-dorsally toothed

Urosome segments 1 and 2 with dorsal teeth

Illustration:

AMPHIPACIFICA VOL II NO. 2 APRIL 10, 1996. 14

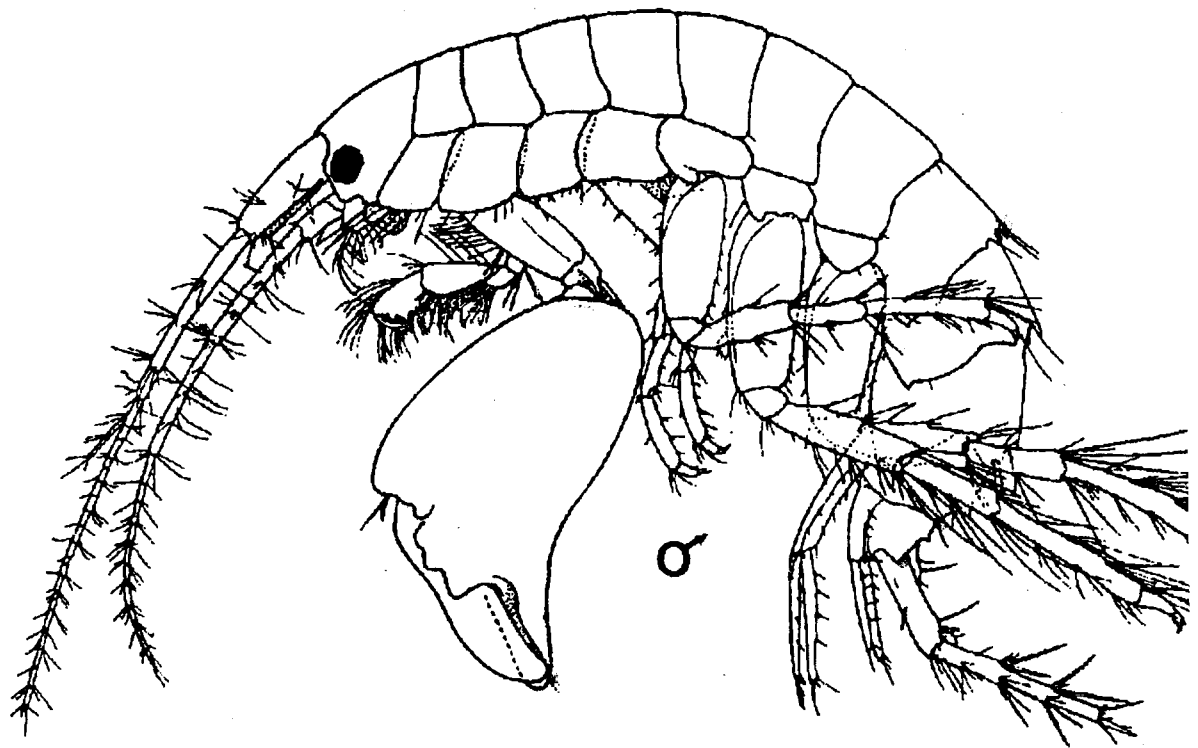


FIG. 5. *Dulichella appendiculata* (Say). North American Atlantic. Male (After Barnard, 1971)