

Maera jerrica

Diagnostic Characters:

Peraeon generally smooth

Abdomen often mid-dorsally toothed or mucronate, rarely spinose or setose or laterally toothed

Head, anterior lobe rounded, inferior antennal sinus reduced, often notch-like

Eye generally small, rounded, pigmented

Antenna 2 shorter than antenna 1

G1 and G2 in males, markedly unequal, G2 propod and dactyl large, carpus short

E3 produced

Telson distal spine < half of telson length

Coxa 1 anterodistally pointed

G2 palmar corner with defining tooth

G2, male, palm with incision

Telson lobes laterally straight, distally each with clear distal incision and one spine sitting in incision, second one on outer margin subdistally

Illustration:

AMPHIPACIFICA VOL. II NO. 4, OCT.-10, 2000 39

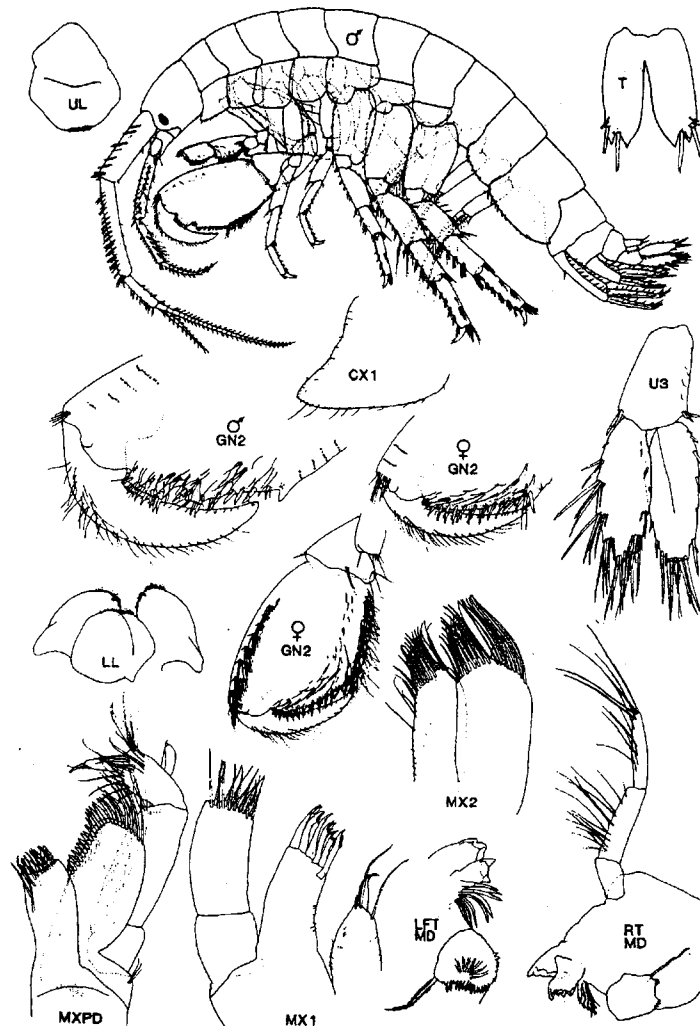


Fig. 7. *Maera jerrica* n. sp. Male 12mm, Little Daykoo I., SE Alaska.

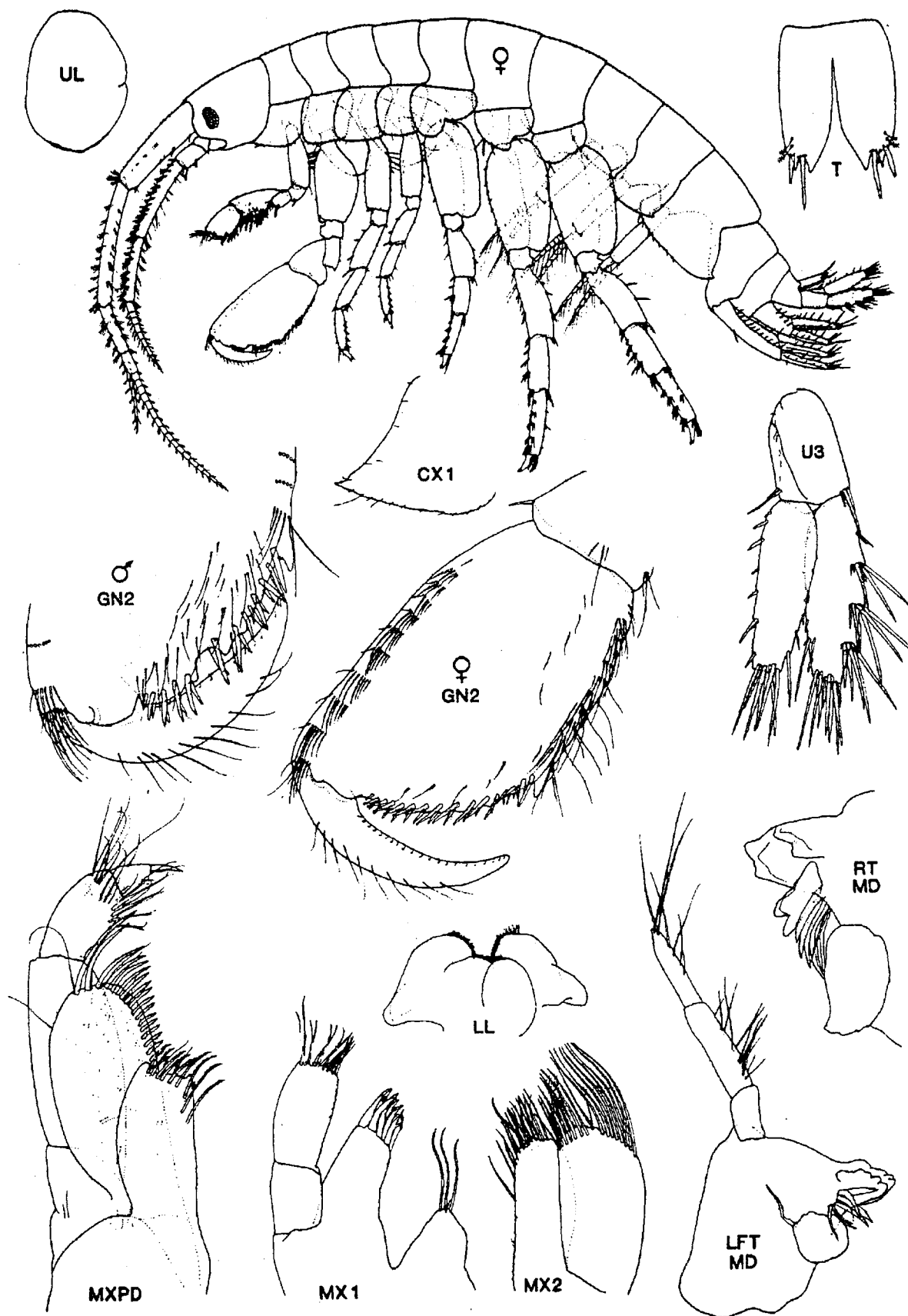


Fig. 8. *Maera cf. jerrica* n. sp. Male 8-9mm, Hinks I., B.C.