

Peramphithoe tea

Diagnostic Characters:

- Body small 6-12 mm
- A1 peduncle with a posterodistal spine
- A2 heavy, proximal segments fused
- A2 three-fourths the length of A1
- G1 segment 5 shorter than segment 6
- G1 dactyl overlapping the palm
- G2 broad, palm with a tubercle at dactyl hinge
- G2 dactyl more than twice as long as G1 dactyl
- P5 segment 4 subequal to segment 5

Illustration:

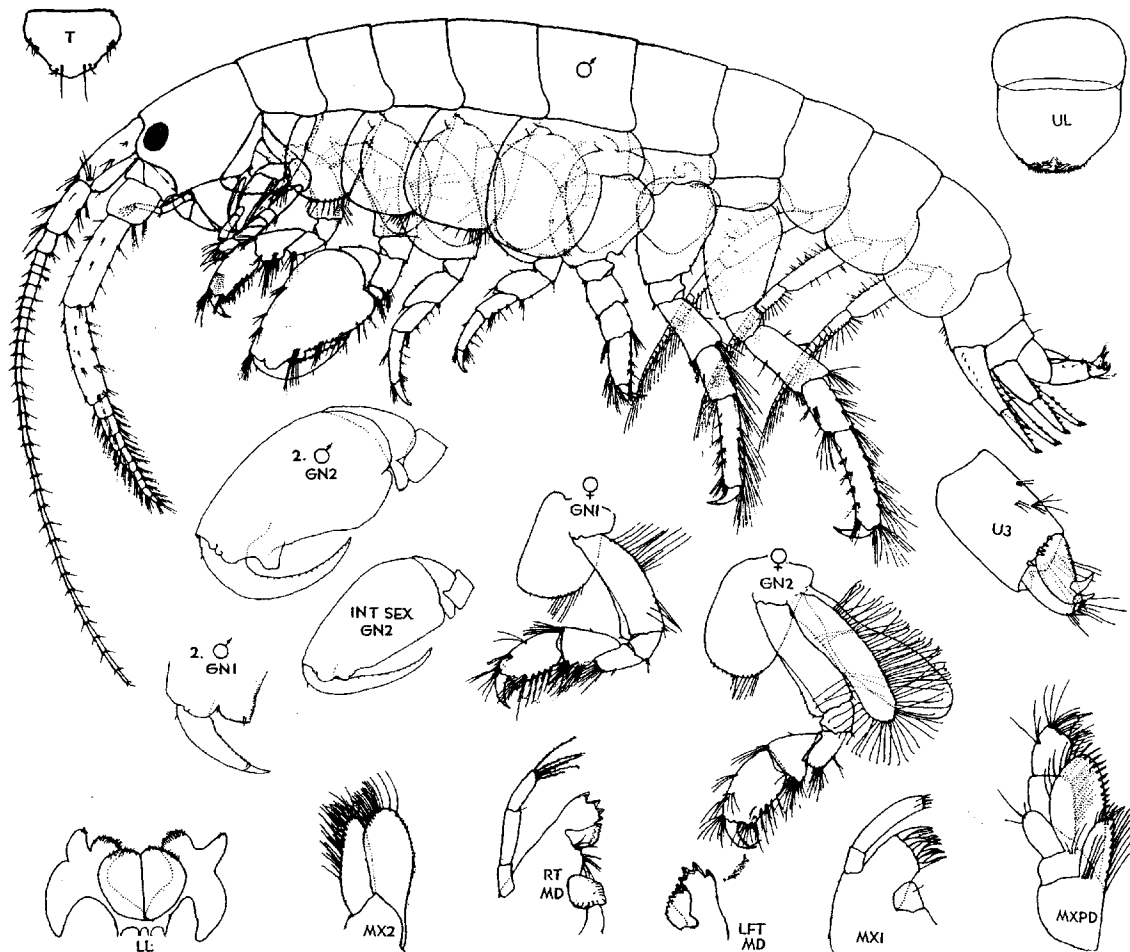


Figure 14. *Peramphithoe tea* (Barnard) ♂ 8.0 mm; ♀ 7.5 mm, Whiffen Spit, Sooke, Vancouver Is., B.C. 11 August 1969. Intersex, Yakoun Bay, Queen Charlotte Islands, B.C.