

Peramphithoe mea

Diagnostic Characters:

- Body large 19-35 mm
- A2 flagellum slender, proximal segments not fused
- G1 segment 5 subequal to segment 6
- G2 broader than G1, palm oblique, dactyl less than twice the length of G1 dactyl
- G2 segment 5 not longer than deep and shorter than 6
- P5 segment 4 longer than segment 5
- P7 subequal to P6

Illustration:

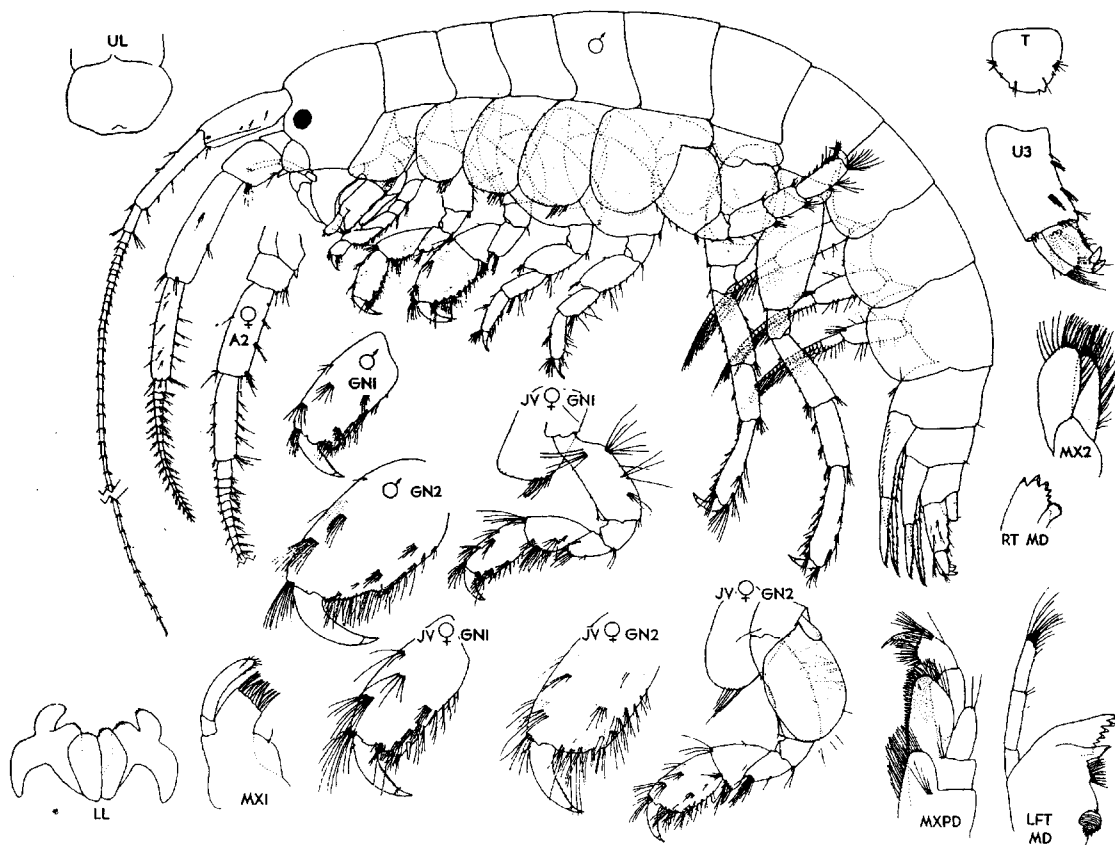


Figure 12. *Peramphithoe mea* (Gurjanova) ♂ 18.0 mm, Deer Is., Aleutian Is., Alaska. 17 Sept. 1970