

## *Peramphithoe lindbergi*

### Diagnostic Characters:

- Body small 6-12 mm
- A1 peduncle with posterodistal spine
- A2 heavy, peduncle segments 5-6 of flagellum fused
- A2 half the length of A1
- G1 segment 5 shorter than segment 6
- G1 dactyl overlapping the palm
- G2 broader than G1, palm lacking tubercle at hinge, dactyl never more than half the length of the hand
- G2 dactyl twice as long as G1 dactyl
- P5 segment 4 subequal to segment 5

### Illustration:

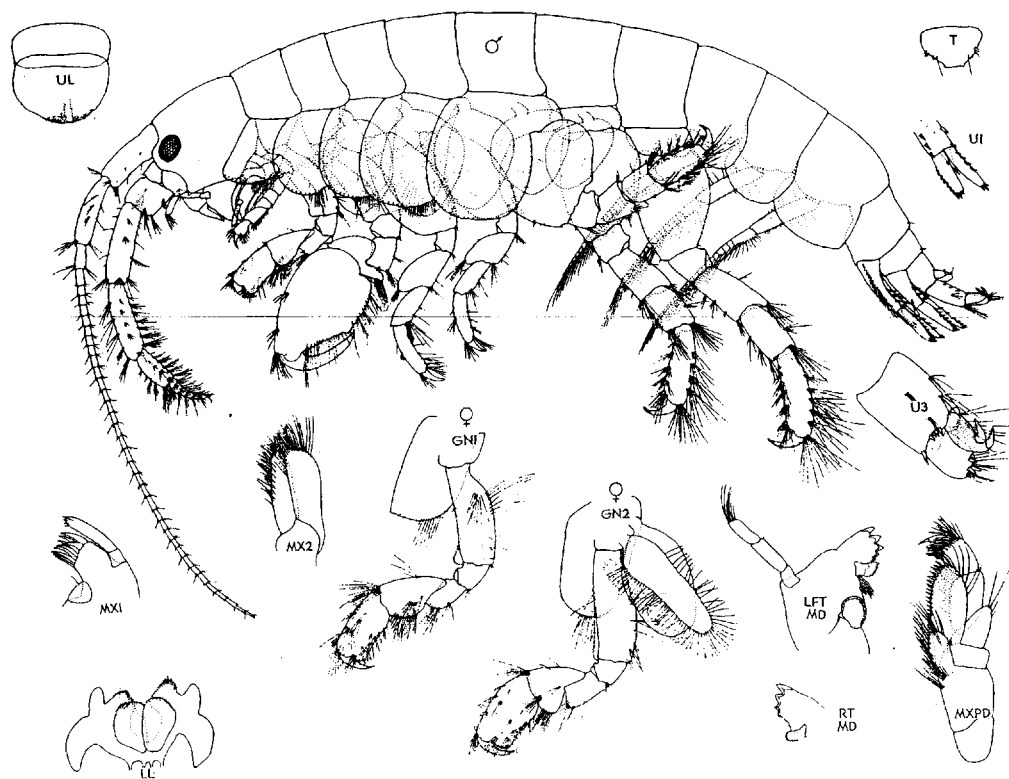


Figure 13. *Peramphithoe lindbergi* (Gurjanova) ♂ 11.0 mm; ♀ 10.0 mm, Haines Is., Barkley Sound, Vancouver Is., B.C. 8 August 1975