

# *Cymadusa uncinata*

## Diagnostic Characters:

- A1 accessory flagellum multi-segmented
- G1 palm oblique
- U1 & U2, spinous process projecting distally below rami

## Illustration:

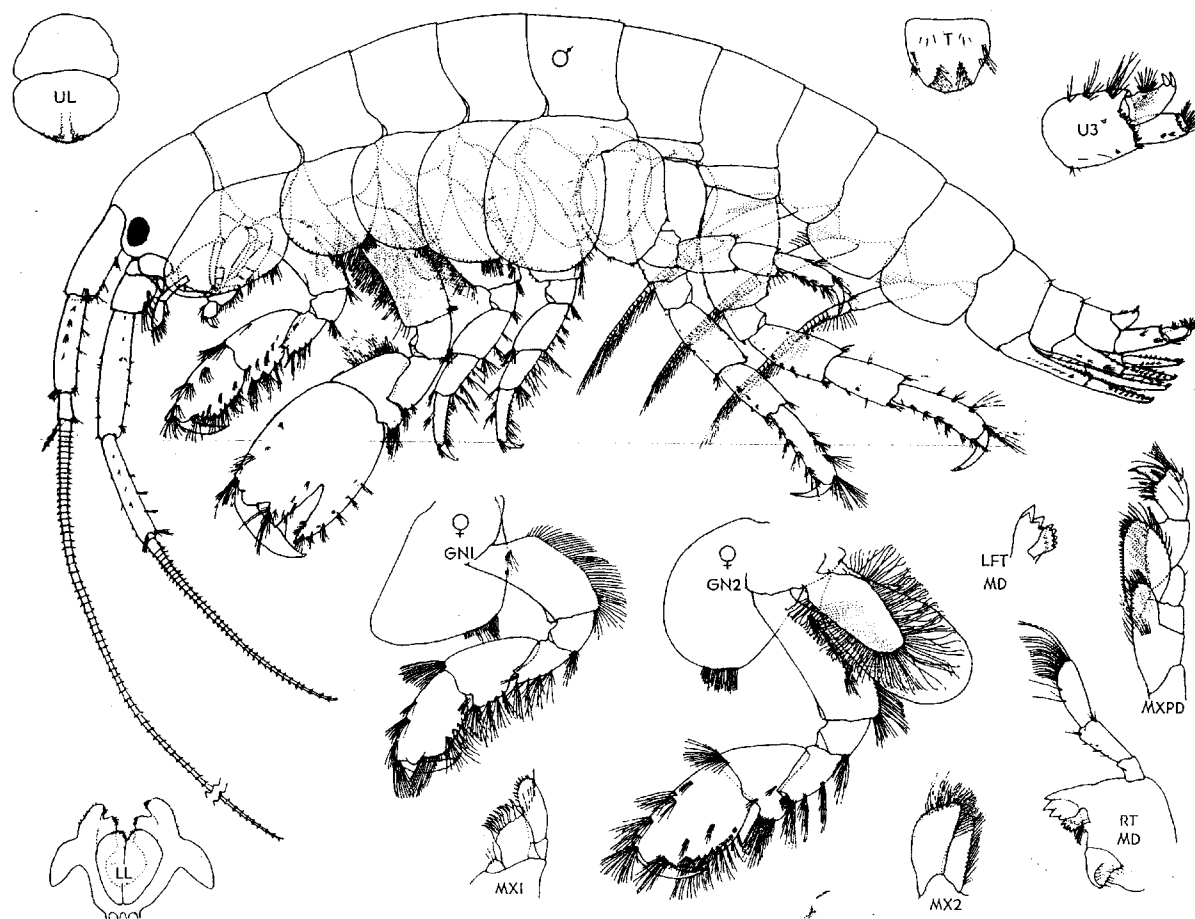


Figure 1. *Cymadusa uncinata* Stout ♂ 20.0 mm, Trial Island Point, Victoria, B.C. 18 May 1977; ♀ 23.0 mm, Shipwreck Point, Clallam County, Washington. 1 Aug. 1966