

Ampithoe plumulosa

Diagnostic Characters:

- A2 with dense plumose setae on peduncle 5 and flagellum
- G1 segment 5 shorter than 6
- G1 segment 5 broad
- G2 palm sinuous
- Pereopods 3 and 4 slender
- Epimeron 3, hind margin evenly rounded

Illustration:

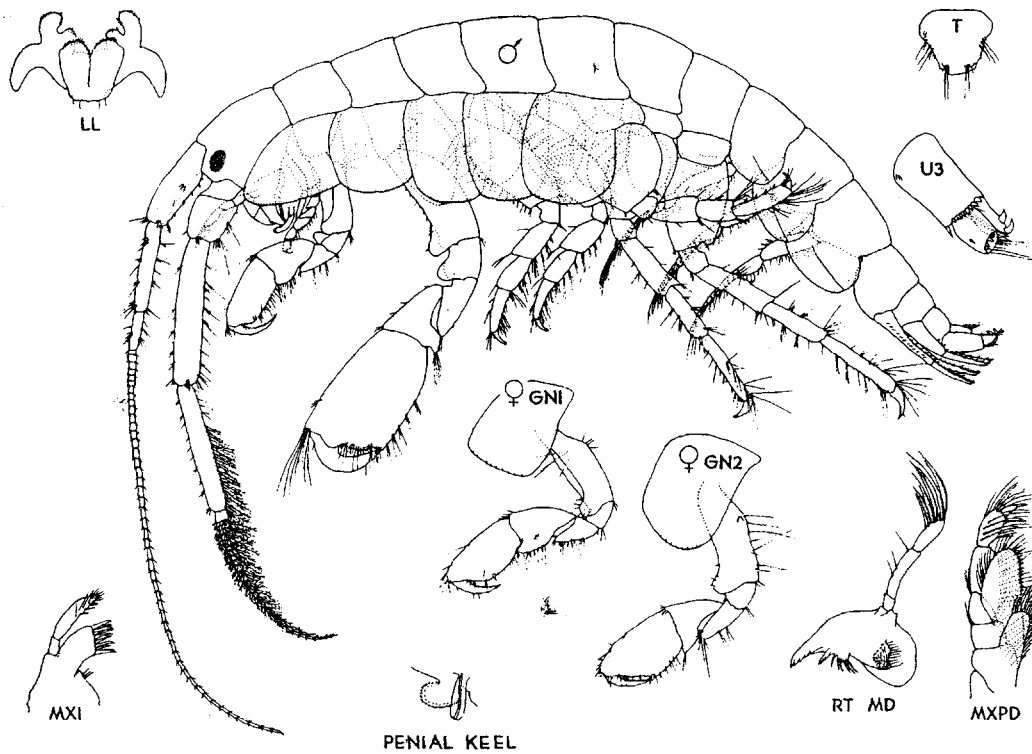


Figure 4. *Ampithoe plumulosa* Shoemaker ♂ 16 mm, La Jolla, California. 20 Sept. 1918. Reconstructed from Shoemaker, 1938