

Ampithoe lacertosa

Diagnostic Characters:

- A1 longer than A2
- A1 peduncle 1 setose, bearing one to several spines on the ventral margin
- A2 lacking dense plumose setae
- G1 segment 5 longer than segment 6
- G1 segment 5 and 6 bearing upright plumose setae
- G1 segment 5 broad
- G2 palm sinuous
- Pereopods 3 and 4 slender
- Epimeron 3, hind margin with strong notch from which radiates a lateral ridge

Illustration:

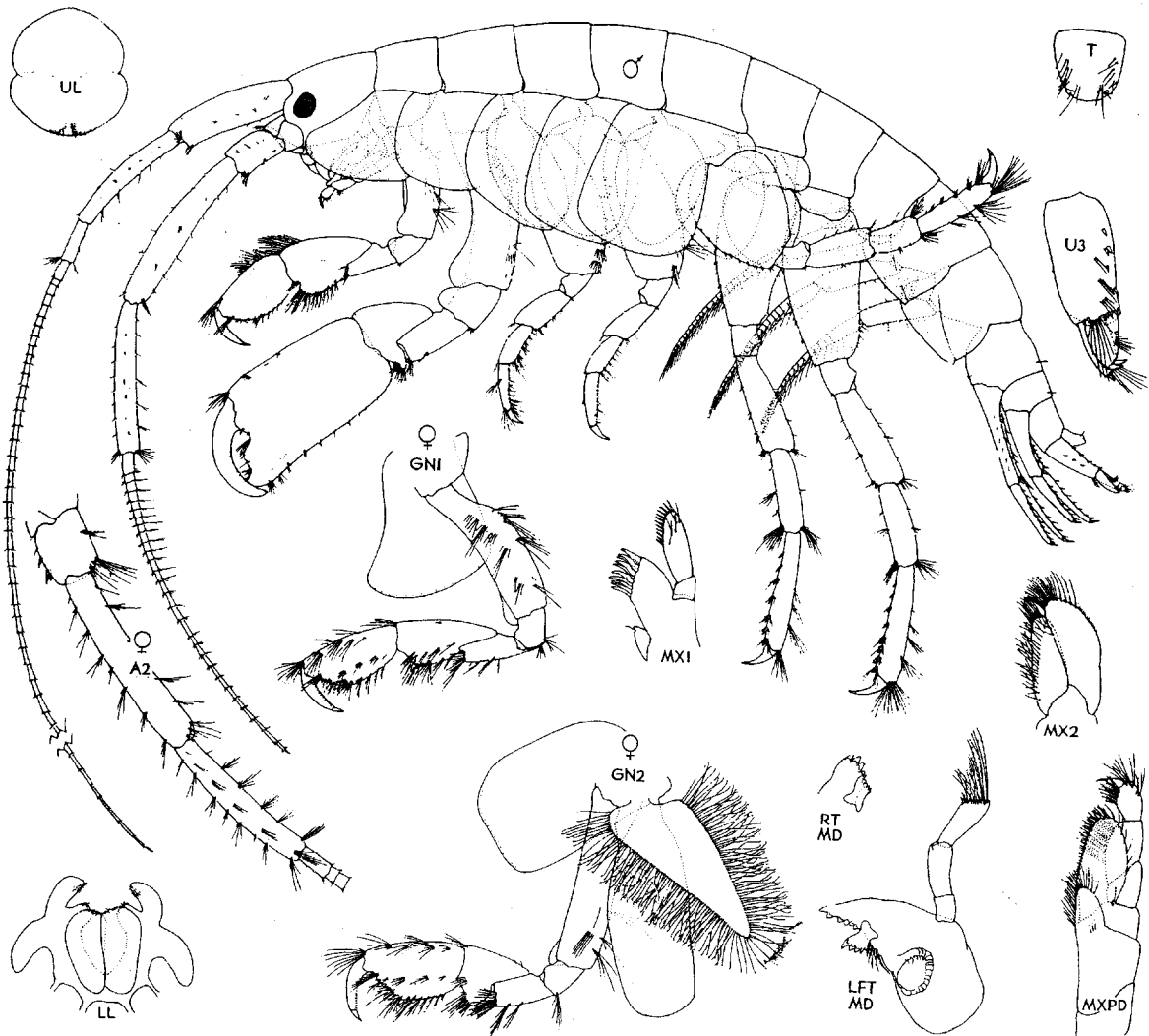


Figure 2. *Ampithoe lacertosa* Bate ♂ 21.5 mm; ♀ 30.0 mm, Friday Harbor, San Juan Is., Washington. April 1977